



Parks and Recreation Board Meeting

# Bolm District Park Vision Plan

**Charles Mabry** Project Manager, PARD

**Aaron Cooper** Landscape Architecture Team Leader, Halff



# Context

- 68.1 acres
- Historically vacant or used for agricultural purposes
- Purchased in 1972 by Capitol Aggregates
- Capitol Aggregates left in 2008
- Sold to the City of Austin in 2013





# Current Conditions





# Schedule

- **May – September 2023**  
Site Analysis and Data Collection
- **October – December 2023**  
Community Engagement Round 1
- **December 2023 – January 2024**  
Vision Plan Concept Options Development
- **January – March 2024**  
Community Engagement Round 2
- **March – April 2024**  
Draft Vision Plan Concept Development
- **April – June 2024**  
Community Engagement Round 3
- **July – September 2024**  
Vision Plan Report
- **October – November 2024**  
Approved





# Community Engagement

- **Community Values Meeting** (Oct 2023)  
Virtual and in-person meetings w/ community leaders and non-profits (18 participants)
- **Round 1 – Uncovering the Community Vision** (Nov-Dec 2023)  
Virtual community meeting (56)  
3 Pop-up meetings (85)  
Online survey (606)
- **Round 2 – Building Consensus** (Jan-Mar 2024)  
Virtual community meeting (69)  
4 Pop-up meetings (278)  
Online survey (982)
- **Round 3 – Confirming the Community Vision** (Apr-Jun 2024)  
Virtual community meeting (56)  
3 Pop-up meetings (279)  
Online survey (751)





# Community Values

1. Provide a variety of active, passive, natural, and cultural experiences and activities for a multi-generational and multi-cultural community.
2. Preserve, enhance, and celebrate the parks existing natural features to allow park users to connect with nature.
3. Support accessibility to and within the park.
4. Develop the park as an environment that is both safe and respectful.







# Vision Plan



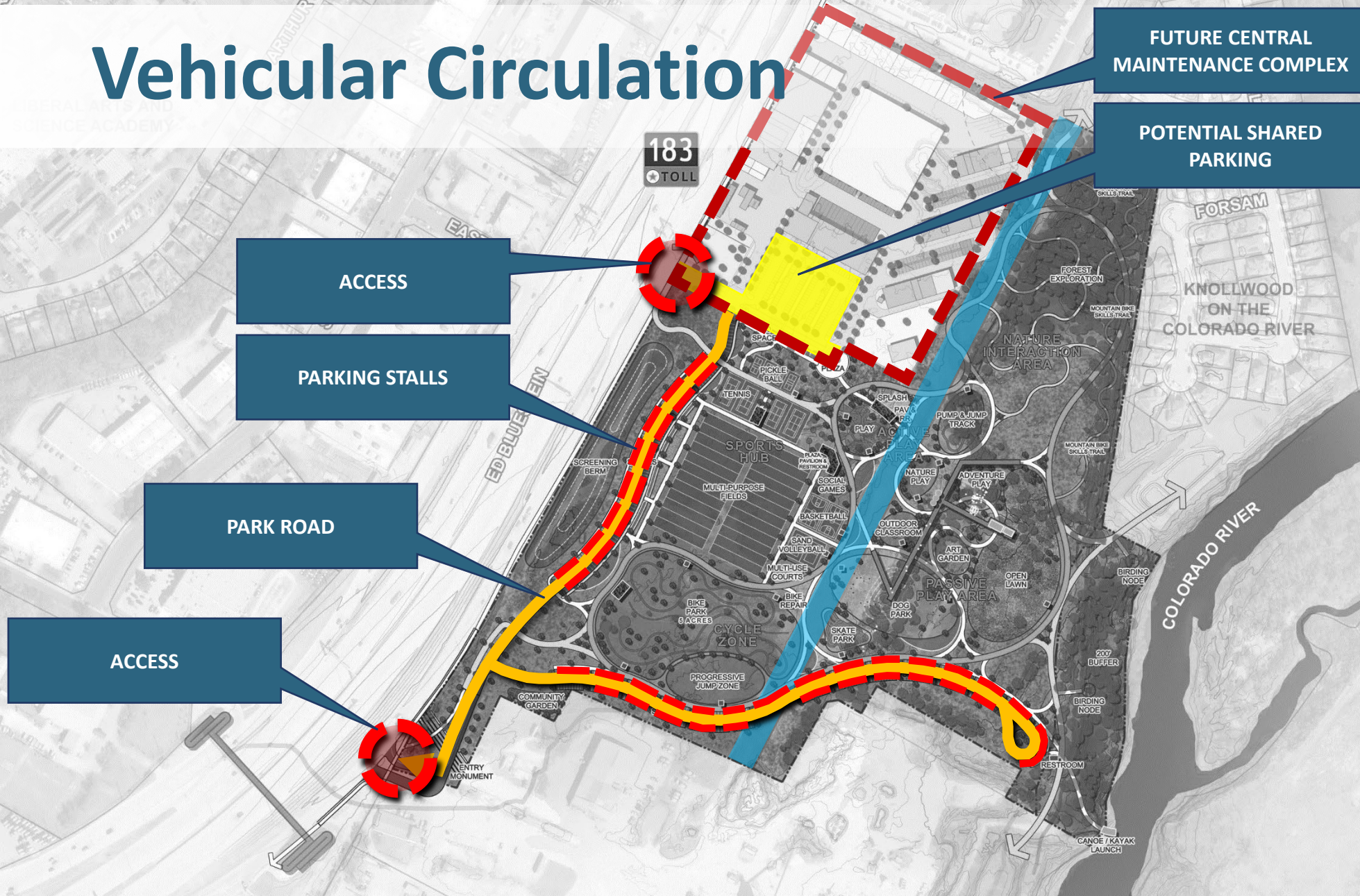


# Activity Zones



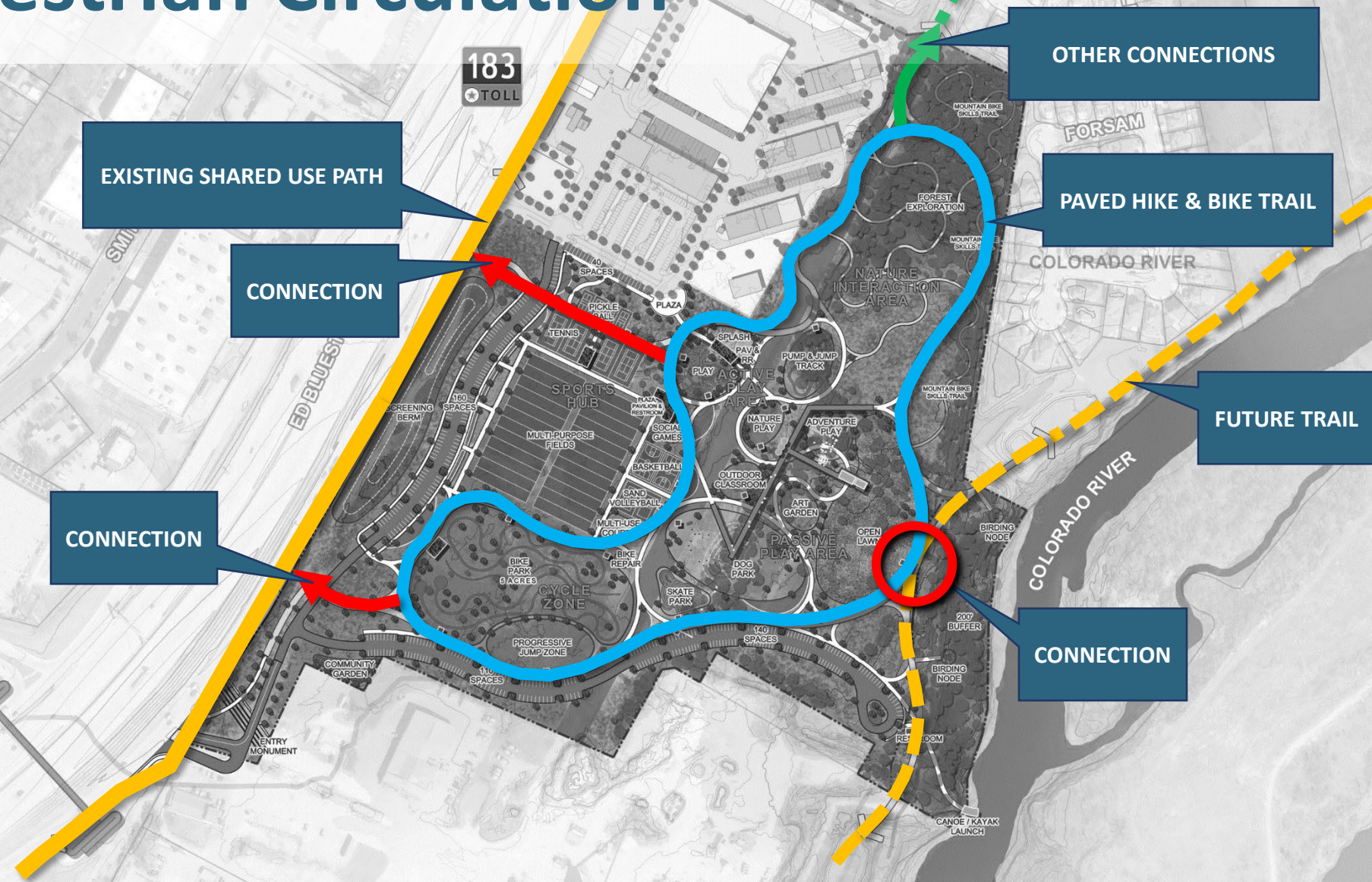


# Vehicular Circulation



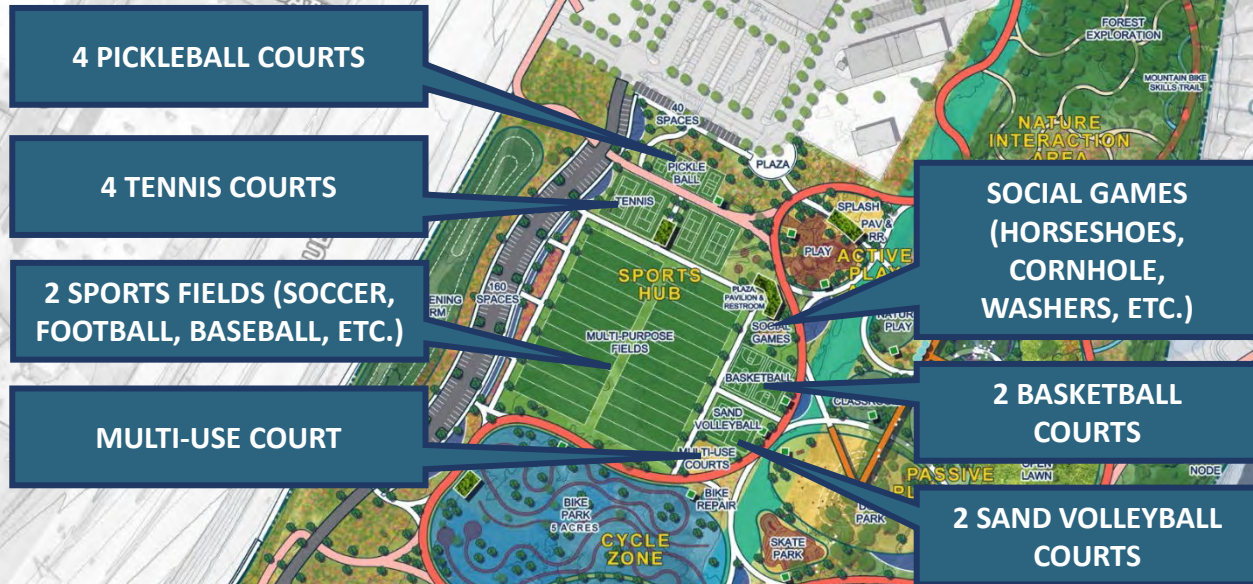


# Pedestrian Circulation



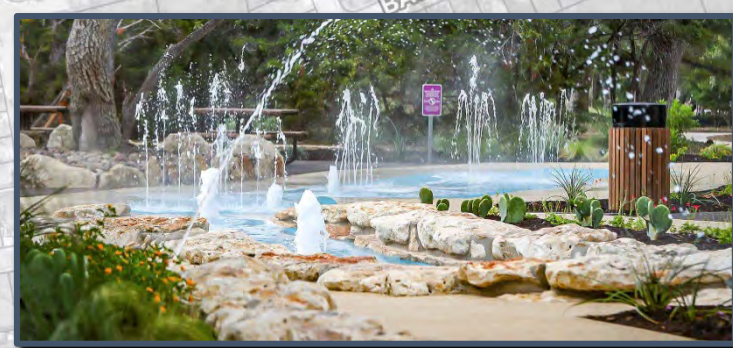


# Sports





# Active Play

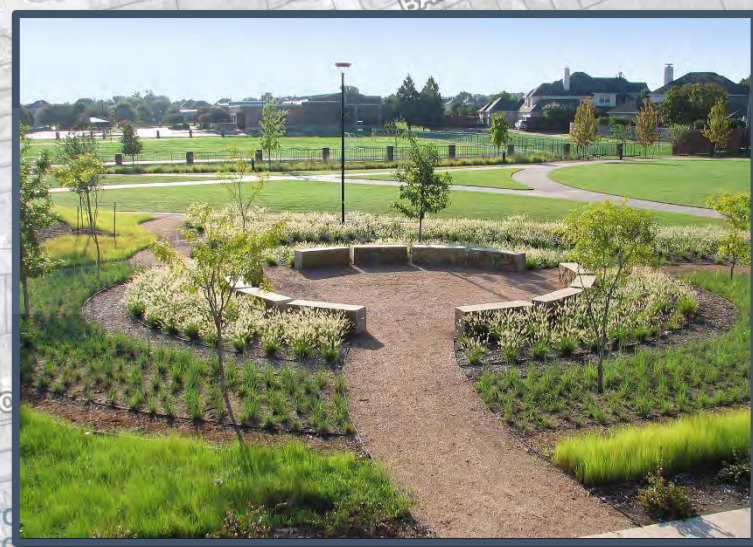








# Passive Play









# Nature Interaction





# Action Sports





# Restrooms



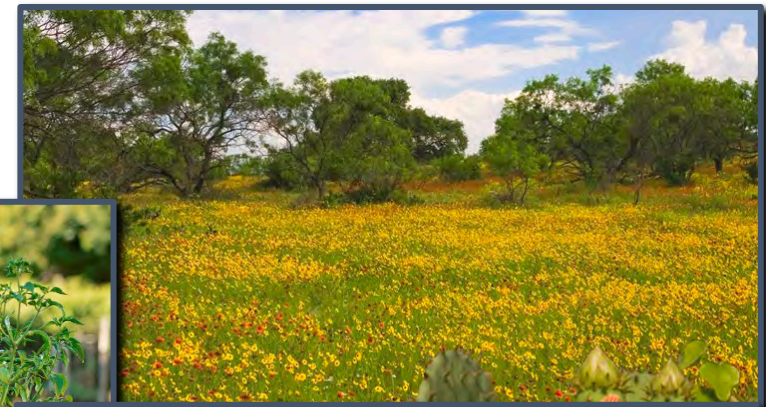






# Other Amenities

- Wildflower meadows
- Public art
- Rain collection
- Pavilions/picnicking
- Community garden





# Initial Park Opening

- Remove non-native and invasive species to allow native plants to thrive
- Remove debris, spoils, and other dumping that has occurred within the parkland
- Install access gates at all vehicular entrances to shut down access outside of park hours
- Clear and compact an earthen 1-mile loop trail w/ river access
- Placement of a temporary parking lot with paved ADA spaces

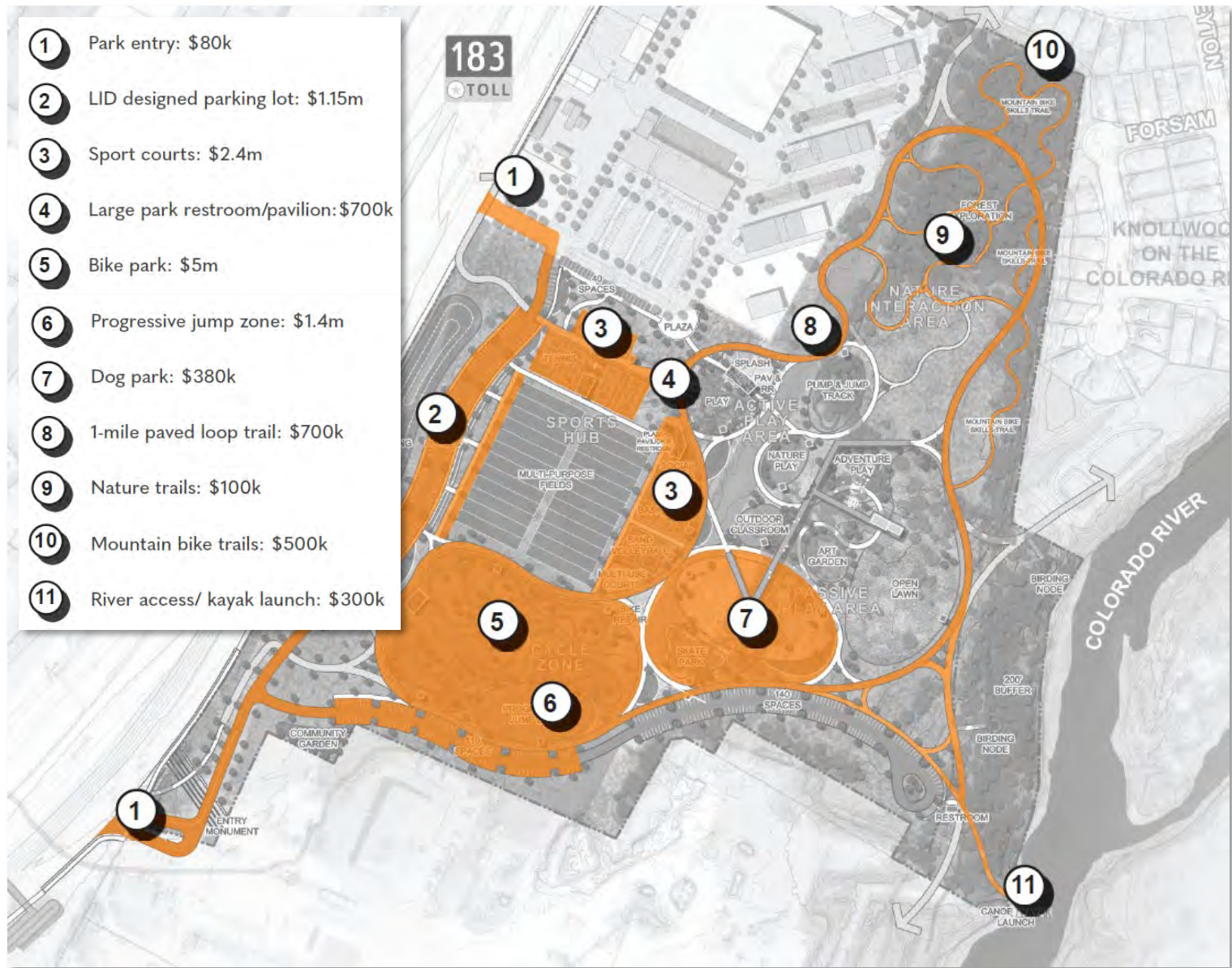




# Phasing

Priority projects in response to community feedback

- Bike park facilities
- Trails
- Sport courts
- Nature access





# Request for recommendation to support the Bolm District Park Vision Plan.

