



Asian American Resource Center Pavilion

Design Commission Project Review Application

Appendix I

December 02, 2024

Exhibits

Exhibit 1 Application

Exhibit 2 Zoning (see Presentation)

Exhibit 3 Vicinity Plan, including public transportation (see pg. 5)

Exhibit 4 Site Plan and Landscape Plan (see Presentation)

Exhibit 5 Floor Plan (see Presentation)

Exhibit 6 Elevations + 3D Views (See Presentation + Below)

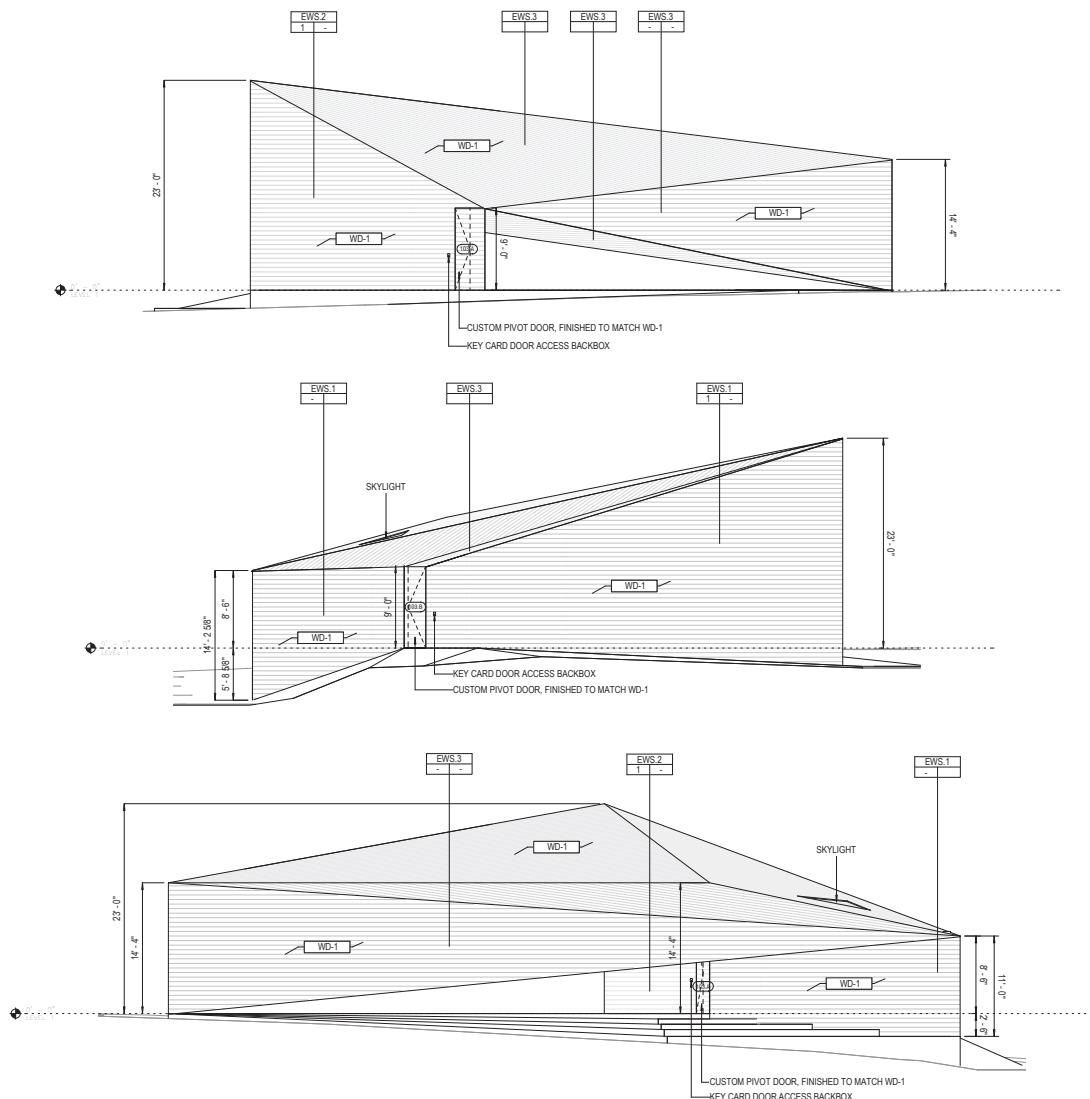


Exhibit 9 Records of Public Participation (see Appendix II)

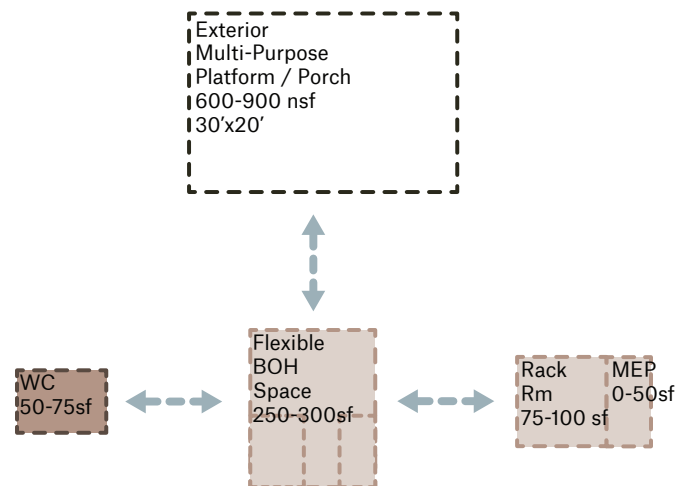
B. Project Background

6 Provide project background including goals, scope, building/planning type, and schedule. Broadly address each of the “Shared Values for Urban Areas” that are listed on Page 6 of the Urban Design Guidelines.

The Asian American Resource Center Phase II Improvements project seeks to increase programmatic possibilities for the popular Asian American Resource Center (AARC) through the addition of an exterior performance pavilion and associated interior supportive programming. It is intended to provide a place to empower Austin’s diverse communities through cultural understanding and life-enhancing opportunities. The performance pavilion was outlined in the AARC Master Plan Update adopted by Austin City Council in 2019. The Vision Plan (formerly know as the AARC 2019 Master Plan) is available at: <https://www.austintexas.gov/department/asian-american-resource-center-phase-2-improvements> and serves to guide future facility programming.

The scope of the project includes the performance pavilion and all related infrastructure necessary to meet City development requirements. Additional parking is not included in the scope of this project. The program (represented in the diagram below) for the Asian American Resource Pavilion is the result of a rigorous process of engagement, beginning with a review of the 2019 AARC Vision Plan through a series of in-person and remote review sessions with local stakeholders, users and staff of the AARC, and PARD.

A preliminary program was developed during the initial Conceptual Design phase, from March 01, 2024-April 22, 2024. Following a cost estimate by Flintco (CMAR), the program was refined in during Comment Resolution and Schematic Design phases, from September 25, 2024-November 06, 2024 through another series of review sessions with local stakeholders,



Shared Values for Urban Areas:

Humane Character: The project is set within a live oak grove park setting with plentiful access to both shade and sunlight.

Density: The pavilion is part of a larger plan for the site that includes further park and building development to create a more dense and vibrant community-focused node for the city along Cameron Road in an otherwise sub-urban fabric.

Sustainability: The project is required to meet SITES certification.

B. Project Background

continued, 6 Diversity: The Asian American Resource Center's mission is to create a space of belonging and healing for Asian American communities in Austin and beyond. We do this through community Collaborations and partnerships; providing rental space; organizing cultural, educational, and health wellness programs and curating art and historical exhibitions. We lead with our values and our vision, so that our diverse communities are supported and connected. The pavilion project is building on the foundation of the AARC, offering additional program space for outdoor performances and other types of events.

Economic Vitality: The pavilion project is a public venue, supporting events and programs throughout the year. The pavilion improves the functionality of the great lawn and offers an opportunity for rentals for other groups.

Civic Art: The pavilion has funds set aside for an AIPP project on the site. The AIPP RFQ is anticipated to be released in May 2025.

A Sense of Time: The form of the pavilion has been developed from the tradition of origami, expressed in a wood rain screen, which will naturally silver over time, reflecting the tones of the live oaks on the site. The use of a natural material is also influenced by Pan-Asian vernacular architecture, which is locally sourced and allowed to beautifully patina, aging gracefully.

Unique Character: The pavilion is expressive and dynamic in form, influenced by the expressive roof forms found throughout Pan-Asian vernacular architecture.

Authenticity: The form of the Pavilion nestles into its surrounding context. The triangular form is driven by the space left by the canopies of the live oak trees and a desire to preserve as much of the open lawn as possible. While contemporary in detailing and expression, representing the time in which the pavilion is built, the pavilion is meant to evoke a confluence of local and Pan-Asian influences.

Safety: Security is paramount on the site, as there is an un-housed population in the area. The project scope includes improving the lighting in the great lawn and all entrances in the pavilion are physically visible from the existing Phase I building. Security cameras are to be integrated into the architecture and supply a direct feed to the Phase I building and BOH space in the pavilion.

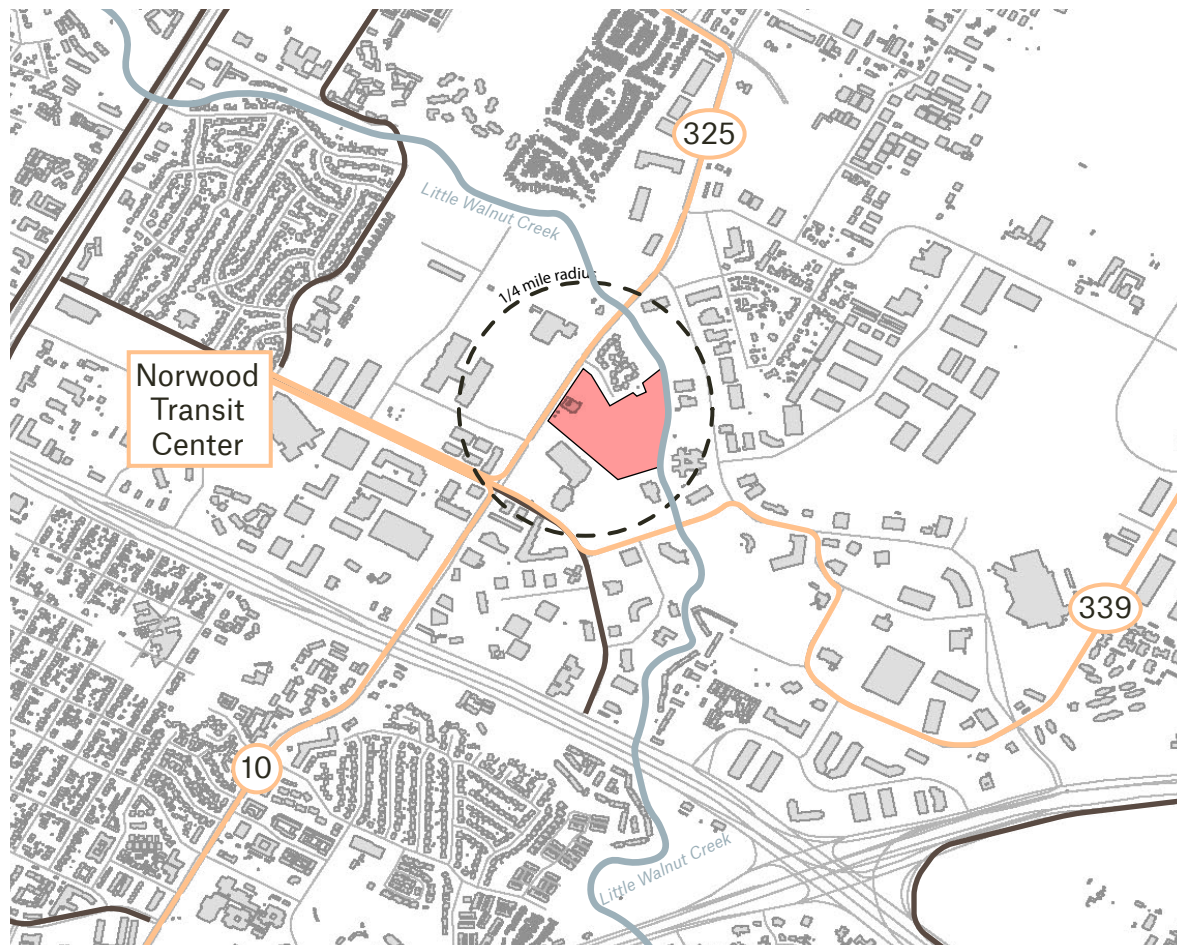
Connection with Outdoors: The pavilion is an outdoor venue in a park setting.

C. Existing Conditions

- 11 Identify connectivity to public transportation including, bicycle and pedestrian routes and/or multimodal transportation. Does the project comply with ADA requirements? Provide a site context map and attach additional pages as needed.

The Asian American Resource Center site is accessible via bus 325. Cameron Rd is considered EXTREMELY LOW-comfort for biking in this area and is not recommended. See Vicinity Map below. However, future improvements associated with the Cameron Road/ Dessau Road Safety Improvements Project has multiple improvements associated to improve a 6.5 mile stretch of roadway including the portion the AARC is located on. In addition, the 2023 Urban Trails Plan identifies a future trail along Little Walnut Creek. A segment of this trail will be constructed with the adjacent Watershed improvement project on the AARC campus.

The project complies with ADA requirements. All areas of the pavilion are accessible via ramps at 5% incline or less. Accessible areas for seating are distributed throughout the Great Lawn.

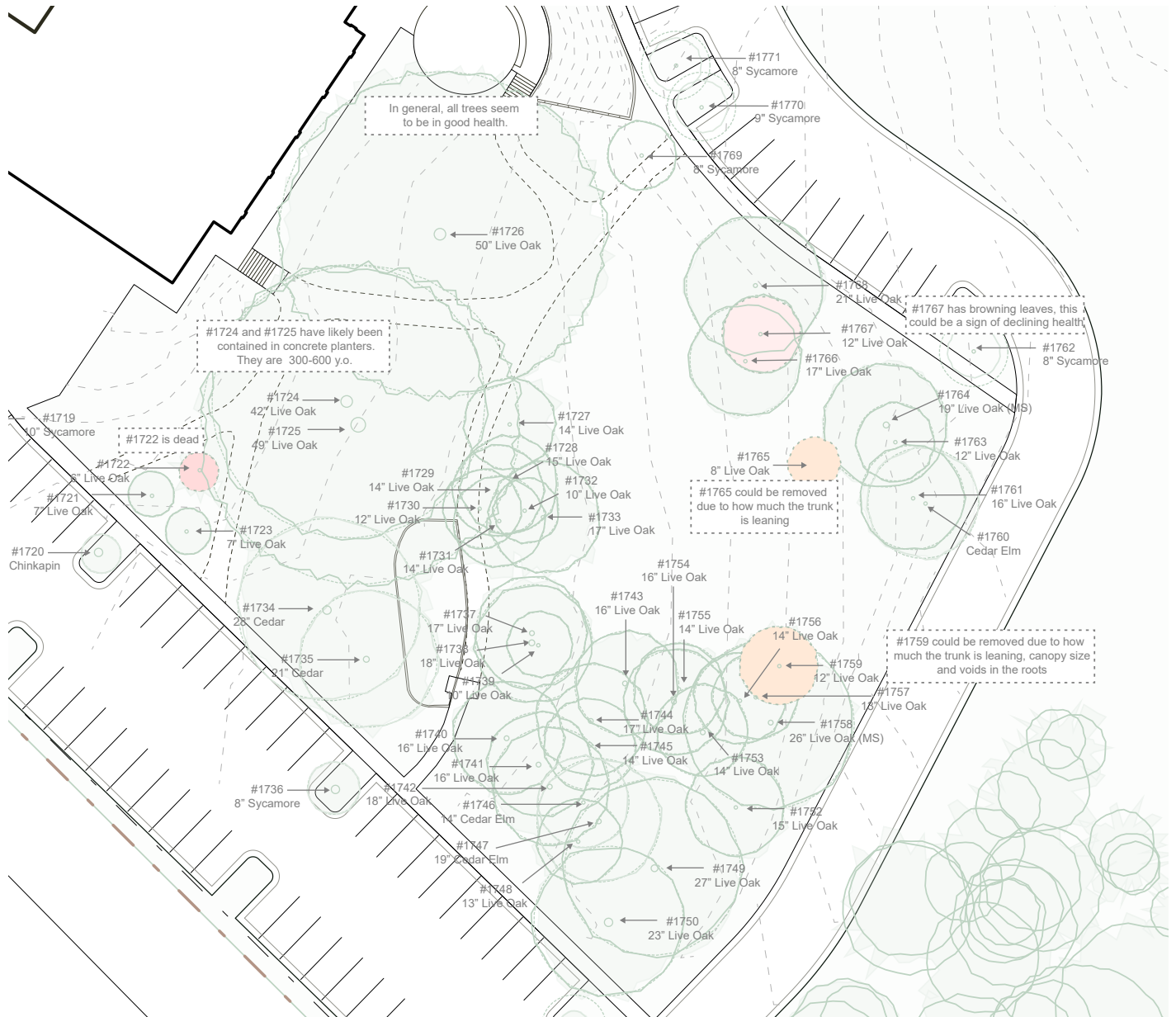


- Bus Route
- Bike Route - High to Medium Comfort
- Little Walnut Creek

C. Existing Conditions

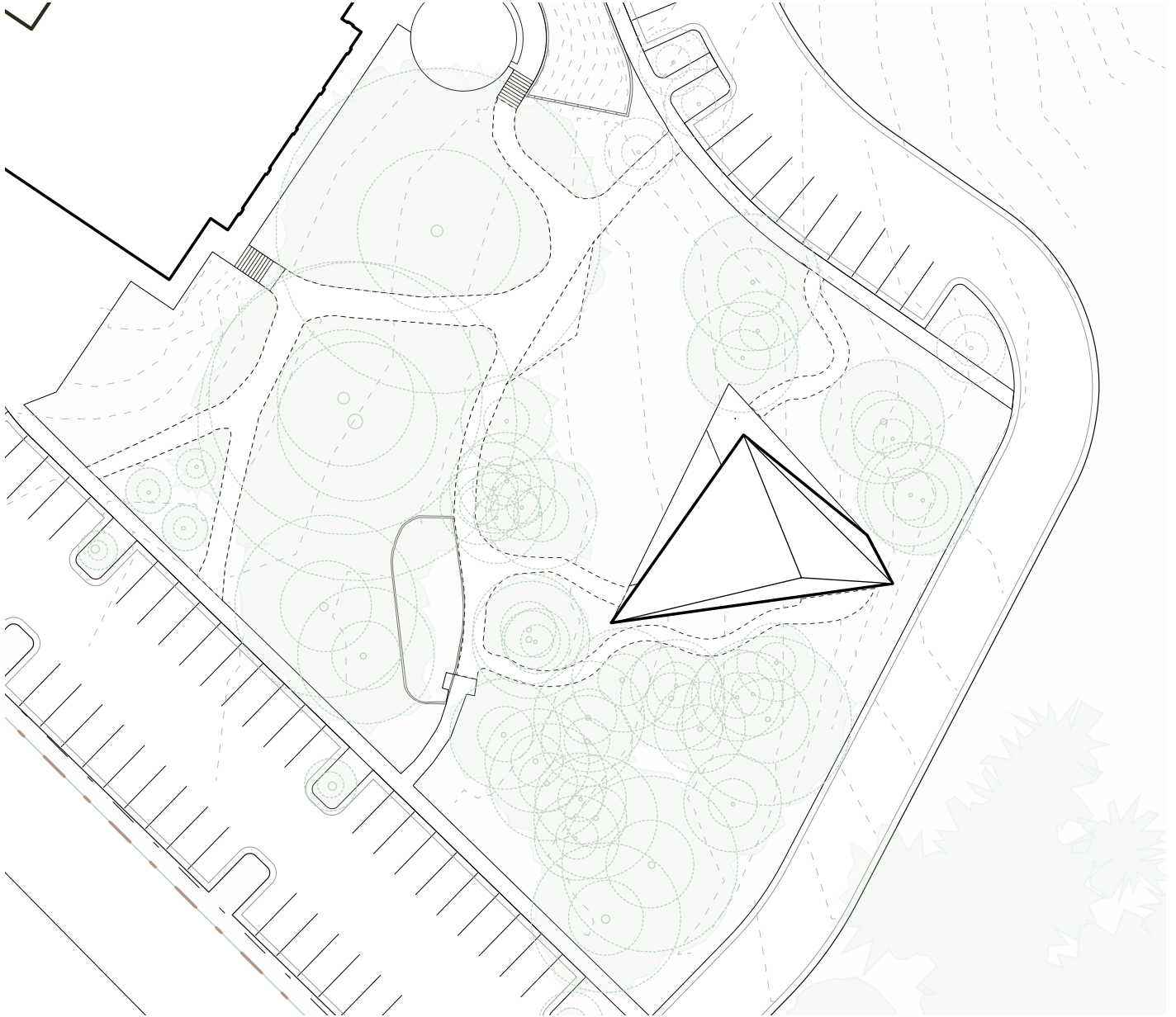
- 12 Identify and describe any existing features that are required to be preserved and/or protected such as heritage trees, creeks or streams, endangered species (flora and/or fauna)? Attach additional site diagrams as needed.**

The scope of work for this project is limited to the great lawn area, which features a grove of heritage live oak trees. See Arborist review below. Tree #1765 to be removed. Mitigation of tree to be in the Watershed project.



C. Existing Conditions

continued, 12 The scope of work for this project is limited to the great lawn area, which features a grove of heritage live oak trees. The pavilion is outside the 100% Critical Root Zone (CRZ). Paving to the pavilion is outside the 50% CRZ, but also outside the 100% CRZ wherever possible.



C. Existing Conditions

- 13 Is this project within any City of Austin planning district, master plan, neighborhood plan, regulatory district, overlay, etc.? If so, please illustrate how this project conforms to the respective plan. Attach additional pages as needed. (See below for requirements.)**

This project is Phase II of the Asian American Resource Center Vision Plan, developed in 2019. The Performance Pavilion is shown in the vision plan in the same location in the location in the great lawn as our current design. See below from the vision plan document. Highlighted in **bold** are the Phase II project elements in the great lawn area.

Phase I

- Existing Building (18,000sf)
 - Ballroom (5,022sf)
 - Library/Computer Lab (422sf)
 - Classroom 1-8 and Conference Room (2,677sf)
 - Office Space (1,095sf)
 - Storage Space (516sf)
 - Commercial Kitchen (approx 650sf)
- Existing Parking (91 spaces)
- Art in Public Places: Lotus Fountain Sculpture
- Great Lawn

Phase II

- Performing Arts Building with Classrooms
- **Pavilion/Stage (1600sf)**
- Pedestrian Bridge
- Parking (222 spaces including existing parking)
- Plaza
- Event Court/Asia Street/Festival Space
- **Event and Activity Lawn**
- **Picnic Area**


Future

- Additional Office Spaces
- Meeting Room
- Studio Spaces
- Natural Garden
- Tea House/Meditation Room
- Vehicular Bridge
- Nature Play Area
- Sculpture Garden
- Playfield
- Additional Pavilion
- Storm Water Quality Improvements
- Better Circulation
- Boardwalk/Nature Trail
- Additional Picnic Areas
- Community Garden
- Future Building
- Connection to Little Walnut Creek


C. Existing Conditions

continued, 13 See the below excerpt from the AARC Master Plan.


STAGE/PAVILION/EVENT LAWN




Stage




Pavilion



Preserve Trees



Evening Festivals



Festivals

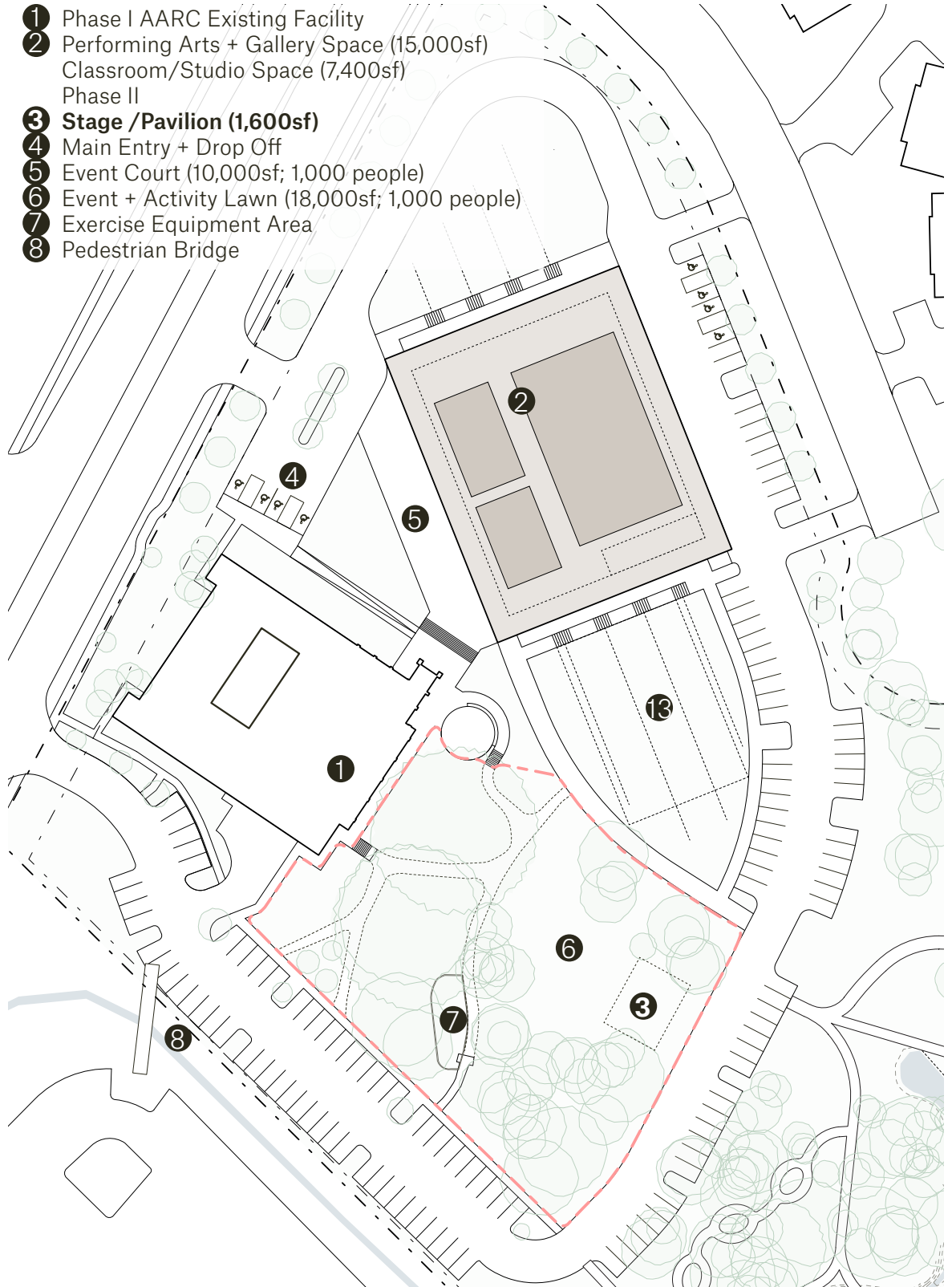
C. Existing Conditions

continued, 13 See the below excerpt from the AARC Master Plan.



continued, 13 See the below AARC Master Plan development for Phase IIB, including the most recent AARC Performing Arts Center.

- ① Phase I AARC Existing Facility
- ② Performing Arts + Gallery Space (15,000sf)
Classroom/Studio Space (7,400sf)
Phase II
- ③ Stage /Pavilion (1,600sf)
- ④ Main Entry + Drop Off
- ⑤ Event Court (10,000sf; 1,000 people)
- ⑥ Event + Activity Lawn (18,000sf; 1,000 people)
- ⑦ Exercise Equipment Area
- ⑧ Pedestrian Bridge



Asian American Resource Center Pavilion

SITES v2 Scorecard

Date: 11/11/2024

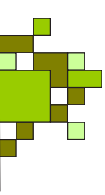
Yes	Possible	Not Likely	No	Available	D/c		Primary Responsible Party	Status
7	0	0	6	13		1: SITE CONTEXT		
Y				Req.	D	CONTEXT P1.1 Limit development on farmland	Civil	
						Case 1: Sites without farmland soils		
						Case 2: Sites with farmland soils - VSPZ		
						Case 3: Sites with farmland soils - Mitigation		
Y				Req.	D	CONTEXT P1.2 Protect floodplain functions	Civil	
						Case 1: Sites without floodplain		
						Case 2: Previously developed and brownfield sites within floodplain		
						Case 3: Greenfield sites within floodplain		
Y				Req.	D	CONTEXT P1.3 Conserve aquatic ecosystems	Civil/ Biologist/ Ecologist	
						Case 1: Sites without aquatic ecosystems		
						Case 2: Sites with naturally occurring aquatic ecosystems		
						Case 3: Sites with naturally occurring poor quality aquatic ecosystems		
Y				Req.	D	CONTEXT P1.4 Conserve habitats for threatened and endangered species	Biologist/ Ecologist	
						Case 1: Brownfields and previously developed sites		
						Case 2: Greenfield sites		
			6	3 to 6	D	CONTEXT C1.5 Redevelop degraded sites	Owner	
						Case 1: Previously developed sites (3 pts)		
						Case 2: Brownfield sites (6 pts)		
4				4	D	CONTEXT C1.6 Locate projects within existing developed areas	Owner	
3				2 to 3	D	CONTEXT C1.7 Connect to multi-modal transit networks	Owner	
						Option 1: Pedestrian and bicycle network (2 pts)		
						Option 2: Transit network (3 pts)		
0	3	0	0	3		2: PRE-DESIGN ASSESSMENT + PLANNING		
Y				Req.	D	PRE-DESIGN P2.1 Use an integrative design process	GN/ Arch	
Y				Req.	D	PRE-DESIGN P2.2 Conduct a pre-design site assessment	Team	
Y				Req.	D	PRE-DESIGN P2.3 Designate and communicate VSPZs	LA/ Owner/ Ecologist	
	3			3	D	PRE-DESIGN C2.4 Engage users and stakeholders	LA/Owner	
4	5	0	14	23		3: SITE DESIGN - WATER		
Y				Req.	D	WATER P3.1 Manage precipitation on site	Civil/ LA	
Y				Req.	D	WATER P3.2 Reduce water use for landscape irrigation	LA	
	4		2	4 to 6	D	WATER C3.3 Manage precipitation beyond baseline	Civil/ LA	
						80th percentile precipitation event (4 pts)		
						90th percentile precipitation event (5 pts)		
						95th percentile precipitation event (6 pts)		
4	1		1	4 to 6	D	WATER C3.4 Reduce outdoor water use	LA	
						Option 1: Reduce outdoor water use (4 pts)		
						Option 2: Significantly reduce outdoor water use (5 pts)		
						Option 3: Eliminate outdoor water use (6 pts)		
			5	4 to 5	D	WATER C3.5 Design functional stormwater features as amenities	Civil/ LA	
						50% of stormwater features (4 pts)		

Yes	Possible	Not Likely	No	Available	D/C		Primary Responsible Party	Status
						100% of stormwater features (5 pts)		
			6	4 to 6	D	WATER C3.6 Restore aquatic ecosystems	Biologist/ LA/ Ecologist	
						No aquatic ecosystems present on site		
						30% of the geographic extent (4 pts)		
						60% of the geographic extent (5 pts)		
						90% of the geographic extent (6 pts)		
20	1	4	15	40	4: SITE DESIGN - SOIL + VEGETATION			
Y				Req.	D	SOIL+VEG P4.1 Create and communicate a soil management plan	LA/ Geotech/ Biologist	
Y				Req.	D	SOIL+VEG P4.2 Control and manage invasive plants	LA/ Biologist	
						Case 1: No invasive plants found on site		
						Case 2: Invasive plants identified on site		
Y				Req.	D	SOIL+VEG P4.3 Use appropriate plants	LA	
6				4 to 6	D	SOIL+VEG C4.4 Conserve healthy soils and appropriate vegetation	LA/ Biologist	
						No healthy soils and/or appropriate vegetation present on site		
						50% of the site's existing vegetated area (4 pts)		
						75% of the site's existing vegetated area (5 pts)		
						95% of the site's existing vegetated area (6 pts)		
4				4	D	SOIL+VEG C4.5 Conserve special status vegetation	LA/ Biologist	
6				3 to 6	D	SOIL+VEG C4.6 Conserve and use native plants	LA/ Biologist	
						20% total native plant score (3 pts)		
						40% total native plant score (4 pts)		
						60% total native plant score (6 pts)		
		4	2	4 to 6	D	SOIL+VEG C4.7 Conserve and restore native plant communities	LA/ Biologist	
						20% total native plant community score (4 pts)		
						40% total native plant community score (5 pts)		
						60% total native plant community score (6 pts)		
	1		5	1 to 6	D	SOIL+VEG C4.8 Optimize biomass	LA/ Biologist	
						minimal point score (1 pt)		
						low point score (3 pts)		
						mid point score (5 pts)		
						high point score (6 pts)		
4				4	D	SOIL+VEG C4.9 Reduce urban heat island effects	Arch/ Civil	
			4	1 to 4	D	SOIL+VEG C4.10 Use vegetation to minimize building energy use	LA/ Arch	
						No buildings present on site		
						Option 1: Reduce energy use - 5% reduction (2 pts)		
						Option 1: Reduce energy use - 7% reduction (4 pts)		
						Option 2: Provide shade structures - 30% shaded (1 pt)		
						Option 2: Provide shade structures - 60% shaded (2 pts)		
						Option 3: Provide a windbreak - one row (1 pt)		
						Option 3: Provide a windbreak - two or more rows (2 pts)		
			4	4	D	SOIL+VEG C4.11 Reduce the risk of catastrophic wildfire	LA/Biologist/ E.E	
					x	Project not in a fire-prone area		
						Project is in a fire-prone area (4 pts)		
8	14	5	14	41	5: SITE DESIGN - MATERIALS SELECTION			
Y				Req.	C	MATERIALS P5.1 Eliminate the use of wood from threatened tree species	All	
4				2 to 4	C	MATERIALS C5.2 Maintain on-site structures and paving	GC	
						No structures or paving present on site		
						10% of the total existing built surface area (2 pts)		

Yes	Possible	Not Likely	No	Available	D/C		Primary Responsible Party	Status
						20% of the total existing built surface area (3 pts)		
						30% of the total existing built surface area (4 pts)		
			4	3 to 4	C	MATERIALS C5.3 Design for adaptability and disassembly	Civil/ LA/ GC	
						30% of total materials cost, excluding plants, rocks, and soils (3 pts)		
						60% of total materials cost, excluding plants, rocks, and soils (4 pts)		
	3	1		3 to 4	C	MATERIALS C5.4 Reuse salvaged materials and plants	Civil/ LA/ GC	
						10% of total materials cost, excluding soils (3 pts)		
						20% of total materials cost, excluding soils (4 pts)		
	3	1		3 to 4	C	MATERIALS C5.5 Use recycled content materials	Civil/ LA/ GC	
						20% of total materials cost, excluding plants and soils (3 pts)		
						40% of total materials cost, excluding plants and soils (4 pts)		
		3	2	3 to 5	C	MATERIALS C5.6 Use regional materials	Civil/ LA/ GC	
						30% of total materials cost (3 pts)		
						60% of total materials cost (4 pts)		
						90% of total materials cost (5 pts)		
1	2		2	1 to 5	C	MATERIALS C5.7 Support responsible extraction of raw materials	Civil/ LA/ GC	
						Option 1: Advocate for sustainable extraction of raw materials (1 pt)		
						Option 2: Support suppliers that disclose environmental data (3 pts)		
						Option 3: Support suppliers that meet extraction standards (5 pts)		
1	2		2	1 to 5	C	MATERIALS C5.8 Support transparency and safer chemistry		
						Option 1: Advocate for transparency and safer chemistry (1 pt)	Civil/ LA/ GC	
						Option 2: Support manufacturers that disclose chemical data (3 pts)		
						Option 3: Support manufacturers with chemical hazard assessments (5 pts)		
1	2		2	5	C	MATERIALS C5.9 Support sustainability in materials manufacturing	Civil/ LA/ GC	
						Option 1: Advocate for sustainable materials manufacturing (1 pt)		
						Option 2: Support manufacturers that disclose data on sustainable practices (3 pts)		
						Option 3: Support manufacturers that achieve sustainable practices (5 pts)		
1	2		2	1 to 5		MATERIALS C5.10 Support sustainability in plant production	LA	
						Option 1: Advocate for sustainable plant production (1 pt)		
						Option 2: Support producers that disclose data on sustainable practices (3 pts)		
						Option 3: Support producers that achieve sustainable practices (5 pts)		
0	18	5	7	30	6: SITE DESIGN - HUMAN HEALTH + WELL-BEING			
			3	2 to 3	D	HHWB C6.1 Protect and maintain cultural and historic places	Owner	
						No cultural or historic places present on site		
						Option 1: Historic buildings, structures, or objects (2 pts)		
						Option 2: Historic or cultural landscapes (3 pts)		
	2			2	D	HHWB C6.2 Provide optimum site accessibility, safety, and wayfinding	LA/ Arch	
	2			2	D	HHWB C6.3 Promote equitable site use	Owner	
	2			2	D	HHWB C6.4 Support mental restoration	LA	
	2			2	D	HHWB C6.5 Support physical activity	LA/ Owner	
	2			2	D	HHWB C6.6 Support social connection	LA	
			4	3 to 4	D	HHWB C6.7 Provide on-site food production	LA/Owner	
						Option 1: Food production (3 pts)		
						Option 2: Food production and regular distribution (4 pts)		
	4			4	D	HHWB C6.8 Reduce light pollution	LA/ MEP	
		4		4	D	HHWB C6.9 Encourage fuel efficient and multi-modal transportation	Owner	
	1	1		1 to 2	D	HHWB C6.10 Minimize exposure to environmental tobacco smoke	Owner	
						Option 1: Designate smoke-free zones (1 pt)		
						Option 2: Prohibit smoking on site (2 pts)		
	3			3	C	HHWB C6.11 Support local economy	GC	

Yes	Possible	Not Likely	No	Available	D/C		Primary Responsible Party	Status
0	11	4	2	17		7: CONSTRUCTION		
	Y			Req.	C	CONSTRUCTION P7.1	Communicate and verify sustainable construction practices	GC/ Owner/Arch
	Y			Req.	C	CONSTRUCTION P7.2	Control and retain construction pollutants	GC
	Y			Req.	C	CONSTRUCTION P7.3	Restore soils disturbed during construction	GC
	3		2	3 to 5	C	CONSTRUCTION C7.4	Restore soils disturbed by previous development	GC
						low point score (3 pts)		
						mid point score (4 pts)		
						high point score (5 pts)		
	3	1		3 to 4	C	CONSTRUCTION C7.5	Divert construction and demolition materials from disposal	GC
						50% of structural materials + 95% of roads / infrastructure materials (3 pts)		
						75% of structural materials + 95% of roads / infrastructure materials (4 pts)		
	3	1		3 to 4	C	CONSTRUCTION C7.6	Divert reusable vegetation, rocks, and soil from disposal	GC/ Owner
						100% of land-clearing materials retained for use within 50 miles (3 pts)		
						100% of land-clearing materials retained on site (4 pts)		
	2	2		2 to 4	C	CONSTRUCTION C7.7	Protect air quality during construction	GC
						50% total run-time hours from Tier 2 or higher engines (2 pts)		
						50% total run-time hours from Tier 3 or higher engines (3 pts)		
						50% total run-time hours from Tier 4 or higher engines (4 pts)		
6	5	0	11	22		8. OPERATIONS + MAINTENANCE		
	Y			Req.	C	O+M P8.1	Plan for sustainable site maintenance	Owner/OM Team/LA
	Y			Req.	C	O+M P8.2	Provide for storage and collection of recyclables	LA/ Owner
	3		2	3 to 5	C	O+M C8.3	Recycle organic matter	Owner
						100% of vegetation trimmings recycled / composted off site within 50 miles (3 pts)		
						100% of vegetation trimmings recycled / composted on site (4 pts)		
						100% of vegetation trimmings + food waste recycled / composted on site (5 pts)		
4	1			4 to 5	C	O+M C8.4	Minimize pesticide and fertilizer use	Owner/OM Team
						Option 1: Plant health care plan (4 pts)		
						Option 2: Best management practices for plant health care (5 pts)		
			4	2 to 4	C	O+M C8.5	Reduce outdoor energy consumption	MEP/ GC
						30% reduction from baseline energy use for outdoor equipment (2 pts)		
						60% reduction from baseline energy use for outdoor equipment (3 pts)		
						90% reduction from baseline energy use for outdoor equipment (4 pts)		
			4	3 to 4	C	O+M C8.6	Use renewable sources for landscape electricity needs	MEP/ Owner
						Option 1: On-site - 50% annual outdoor site electricity (3 pts)		
						Option 1: On-site - 100% annual outdoor site electricity (4 pts)		
						Option 2: Green power - 50% annual outdoor site electricity (3 pts)		
						Option 2: Green power - 100% annual outdoor site electricity (4 pts)		
2	1		1	2 to 4	C	O+M C8.7	Protect air quality during landscape maintenance	Owner/OM Team
						Option 1: Scheduled maintenance (2 pts)		
						Option 2: Low-emitting equipment (3 pts)		
						Option 3: Manual or electric powered maintenance equipment (4 pts)		
6	4	0	1	11		9. EDUCATION + PERFORMANCE MONITORING		
3			1	3 to 4	C	EDUCATION C9.1	Promote sustainability awareness and education	Owner/ Team
						Option 1: Educational and interpretive elements (3 pts)		
						Option 2: Additional education (4 pts)		
3				3	C	EDUCATION C9.2	Develop and communicate a case study	Owner/ Team
	4			4	C	EDUCATION C9.3	Plan to monitor and report site performance	Owner/OM Team

Yes	Possible	Not Likely	No	Available	D/C		Primary Responsible Party	Status
0	0	0	9	9		10. INNOVATION OR EXEMPLARY PERFORMANCE		
			9	3 to 9	C	INNOVATION C10.1 Innovation or exemplary performance	TBD	
						Option 1: Exemplary performance (3 pts)		
						Option 2: Innovation outside the SITES v2 Rating System (3 pts)		
						Not Certified Current Level		
51	61	18	79	200		TOTAL ESTIMATED POINTS		
Yes	Possible	Not Likely	No	Available		Certified: 70-84, Silver: 85-99, Gold: 100-134, Platinum: 135+		



Date: November 8th, 2024

THE ASIAN AMERICAN RESOURCE CENTER PERFORMANCE PAVILION

OWNER/ARCHITECT: CITY OF AUSTIN/ TRAHAN ARCH

General

- **Updated landscape drawing set.**
- **Complete Site Assessment Process and program plan.**
- Date for Construction start: TBD
- Date for substantial completion: TBD

P2.1 Use an integrative design process

- Date for Kick off with design team: TBD
- Confirm compliance.

P2.3 Conduct a pre-design site assessment

- Complete Site Assessment Form.
- Confirm compliance.

P2.4 Engage users and stakeholders

- Confirm compliance.
- Share all related information.

P5.1 Eliminate the use of wood from Threatened Tree Species

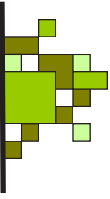
- This prerequisite applies to all new wood products purchased and installed on the project (e.g., mulch, wood for site furniture, decks, railings, outdoor structures) as well as temporary wood used during construction (e.g., formwork, pallets, scaffolding, sidewalk protection, guardrails).
- Confirm compliance.

C6.10 Minimize Exposure to Environmental Tobacco Smoke

- Designate smoke-free zones or Prohibit smoking on site.
- Confirm compliance.

C9.1 Promote Sustainability Awareness and education

- Provide a minimum of three educational or interpretive elements that draw attention to and explain sustainable features or processes of the site design, construction, operations, or maintenance.
- Confirm compliance.



C9.2 Develop and communicate a Case Study

- Complete a Case Study.
- Confirm compliance

L.A.: ASAKURA ROBINSON

General

- Establish Vegetation Soil and Protection Zones (VSPZ).
- Map VSPZ.
- Confirm compliance.

P 3.1 & C 3.3 Manage precipitation on site

- Retain precipitation volume through on-site infiltration, evapotranspiration, and reuse.
- Confirm compliance with narrative, drawings and calculations.

P 3.2 & C3.4 Reduce water use for landscape irrigation.

- Reduce water usage by at least 50% from the baseline case beyond the establishment period.
- Confirm compliance with narrative, drawings and calculations.

P 4.3 Use appropriate plants

- Provide the planting plan.
- Completed Vegetation Worksheet describing site conditions and how all plants being brought to the site are appropriate (see definition) for site conditions, climate, and design intent.

P 4.6 Conserve and use native plants.

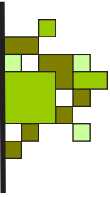
- Completed Vegetation Worksheet describing site conditions and all plants being brought to the site to document native status.
- Complete Native Plants Calculator.
- Planting Plan with VSPZ.
- Confirm compliance.

P5.1 Eliminate the use of wood from Threatened Tree Species

- This prerequisite applies to all new wood products purchased and installed on the project (e.g., mulch, wood for site furniture, decks, railings, outdoor structures) as well as temporary wood used during construction (e.g., formwork, pallets, scaffolding, sidewalk protection, guardrails).
- Confirm compliance.

C5.2 Maintain On-Site Structures and Paving

- Maintain on-site structures and paving.



- Provide Site Plans showing the location of all existing structures and paving and the areas of existing structures and paving to remain on site.
- Confirm compliance.

C6.2 Provide Optimum Site Accessibility, Safety and Wayfinding

- Provide a Site plan showing site accessibility and safety requirements.
- Provide Wayfinding plan.
- Confirm compliance.

C6.3 Promote Equitable Use

- Provide free public access to four features.
- Confirm compliance.

C6.4 Support Mental Restoration

- Site plan showing visual and physical access to vegetation, elements that reduce noise and mitigate negative distractions and Elements that address microclimate and other site-specific conditions.
- Provide seating for 5% of total users.
- Confirm compliance.

C6.5 Support Physical Activity

- Provide a site plan showing specific sites activity.
- Confirm compliance.

C6.6 Support Social Connection

- Provide Site plan with amenities that support social interaction.
- Provide seating for 10% of total users.
- Confirm compliance.

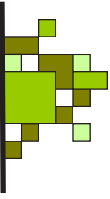
BIOL/ ARBOR/ECOL/ ENV. ENG./CIVIL

P 4.1 Create and communicate a Soil Management Plan

- Create a soil management plan (SMP).
- Fill out the Soil Management Plan Worksheet.

P 4.2 Control and manage invasive plants

- Completed Vegetation Worksheet describing site conditions and all plants being brought to the site, ensuring that no invasive plants are introduced.
- Confirm compliance.



C4.9 Reduce Urban Heat Island Effects

- Confirm compliance.

GENERAL CONTRACTOR

To be discussed since design.

P 4.1 Create and communicate a Soil Management Plan

- Create a soil management plan (SMP).
- Fill out the Soil Management Plan Worksheet.

P 4.2 Control and manage invasive plants

- Completed Vegetation Worksheet describing site conditions and all plants being brought to the site, ensuring that no invasive plants are introduced.
- Confirm compliance.

P5.1 Eliminate the use of wood from Threatened Tree Species

- This prerequisite applies to all new wood products purchased and installed on the project (e.g., mulch, wood for site furniture, decks, railings, outdoor structures) as well as temporary wood used during construction (e.g., formwork, pallets, scaffolding, sidewalk protection, guardrails).
- Confirm compliance.

C5.5 Use recycled content Materials

- Confirm compliance.

C5.6 Use Regional Materials

- Confirm compliance.

C5.7 Support Responsible Extraction of Raw Materials

- Confirm compliance.

C5.8 Support Transparency and Safer Chemistry

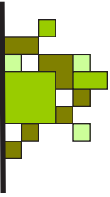
- Confirm compliance.

C5.9 Support Sustainability in Materials and Manufacturing

- Confirm compliance.

C5.10 Support Sustainability in Plant Production

- Confirm compliance.



C6.11 Support Local Economy

- Hire local workforce.
- Complete Construction Hiring Worksheet.
- Confirm compliance.

P7.1 Communicate and Verify Sustainable Construction Practices.

- Complete SITES Punchlist Worksheet.
- Confirm compliance.

P7.2 Control and retain Construction Pollutants

- Create a SWPPP plan or an ESC Plan.
- Provide Site plan showing LID actions.
- Confirm compliance.

P7.3 Restore Soils Disturbed During Construction

- Provide Site plan and Soil Tests.
- Confirm compliance.

C7.4 Restore Soils Disturbed by Previous Development

- Provide Site plan and soil tests.
- Confirm compliance.

C7.5 Divert Construction and Demolition Materials from disposal

- Construction Waste Management plan.
- Confirm compliance.

C7.6 Protect Air During Construction

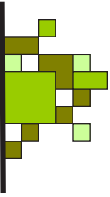
- Use Construction equipment Tier 2, Tier 3 or Tier 4 or higher engines.
- Confirm compliance.

OPERATION AND MAINTENANCE TEAM

To be discussed since design.

P8.1 Plan for Sustainable Site Maintenance

- Provide Site Maintenance Plan.
- Complete Site Maintenance Plan Worksheet.
- Confirm compliance.



P8.2 Provide Storage and Collection of Recyclables

- Conduct a waste stream.
- Provide Site plan with Storage and Recycle containers.
- Provide a copy of a vendor contract or similar.
- Confirm compliance.

C8.3 Recycle Organic Matter.

- Conduct a waste stream with vegetation trimmings.
- Provide Site plan with Recycle Organic containers.
- Confirm compliance.

C8.4 Minimize Pesticide and Fertilizer Use.

- Conduct a waste stream with vegetation trimmings
- Provide Site plan with Recycle Organic containers.
- Confirm compliance.

C8.7 Protect Air Quality.

- Schedule maintenance or Manual or electric powered maintenance equipment.
- Confirm compliance.

C9.3 Plan to Monitor and Report Site Performance.

- Develop a plan or policy to demonstrate ongoing performance monitoring and reporting
- Confirm compliance.

Imagine Austin Related Policies

- LUT P30** Protect and enhance the unique qualities of Austin’s treasured public spaces and places such as parks, plazas, and streetscapes; and, where needed, enrich those areas lacking distinctive visual character or where the character has faded.

The project will enhance the use of the Great Lawn at the AARC campus, offering greater opportunities for programming performances, events, or impromptu gatherings.

- LUT 31** Define the community’s goals for new public and private development using principles and design guidelines that capture the distinctive local character of Austin.

Based on feedback received from the rigorous community engagement process, the following goals were established:

1. The building and campus should have a sense of home for the community.
2. Access and Inclusivity are critical aspects of the project.
3. The building should harbor Cross-Cultural Exchange.
4. The building should focus around Performing Arts and Artist Cultivation.
5. The building should act as a hybrid for performances and community events.
6. The building should be accessible beyond performance/event times.
7. Appropriate, Inclusive, and Respectful influences of Asian Culture.

AARC stakeholders developed the following project design guidelines as part of the performing arts center project that are relevant to the pavilion:

1. Grandeur - grand gestures to the landscape
2. Iconic - expressive and dynamic in form
3. Flow - connection between spaces, people and landscape
4. Transparency - visible and physical connections between spaces
5. Tex-Asian (Interconnectedness) - intersection of Asian and Local influences
6. Harmony with Nature - commitment to social and environmental sustainability. Improve people’s well-being and make like for enjoyable.

- LUT P35** Infuse public art into Austin’s urban fabric in streetscapes along roadways and in such places as parks, plazas, and other public gathering places.

In association with the pavilion project, the City of Austin Art in Public Places program (AIPP) of the Cultural Arts Division, Economic Development Department (EDD) seeks to commission one professional visual artist or artist-led team to design, fabricate and install an exterior artwork at the Asian American Resource Center at 8401 Cameron Rd, Austin, TX 78754 (District 1).

Public Artwork Goals

- A work of art of redeeming quality that advances public understanding of visual art and enhances the aesthetic quality of public places
- Community Engagement Feedback
- Conceptualizes a strong overall artwork design approach that integrates with the site and surrounding natural environment
- Is easily maintained and vandal resistant in an exterior environment
- Is permanent with an expected life span of at least 20 year

- LUT P41** Protect historic buildings, structures, sites, places, and districts in neighborhoods throughout the City.

The site features heritage live oak trees that are to be preserved. A PARD arborist has completed a review of the trees to confirm health and longevity.

Imagine Austin Related Policies

LUT P43 Continue to protect and enhance important view corridors such as those of the Texas State Capitol District, Lady Bird Lake, and other public waterways

Not Applicable

LUT P44 Preserve and protect historic parks and recreation areas.

The pavilion project is improving the functionality of the existing great lawn, meeting additional programmatic needs of the AARC.

E P6 Support up-to-date infrastructure, flexible policies, and programs, and adaptive reuse of buildings, so that local, small, and creative businesses thrive and innovate.

The pavilion is improving the programmatic offerings of the AARC, by creating a space that can support 50 people in a protected outdoor classroom, lecture, or banquet setting. This is currently a type of space that is not available at AARC. The pavilion is reducing the costs of rental equipment for large events, requiring a stage, which must be rented currently. The pavilion is also intended to be rentable, potentially offering a lower-cost option for the community to rent.

CE P3 Expand the City's green infrastructure network to include such elements as preserves and parks, trails, stream corridors, green streets, greenways, and agricultural lands.

The pavilion project includes new accessible trails for improved connection throughout the existing great lawn, as well as accessible seating locations for performance viewing distributed throughout the lawn. The concurrent watershed project includes an expanded trail network with the pavilion (centrally located on the site) situated between the existing facility and the new trail system.

CE P11 Integrate development with the natural environment through green building and site planning practices such as tree preservation and reduced impervious cover and regulations. Ensure new development provides necessary and adequate infrastructure improvements.

The pavilion is set within park setting of the great lawn and integrated into the space left outside the critical root zones of the live oak trees in a position intended to preserve as much of the open lawn as possible, which is the only flat area available for outdoor programming on the site other than the existing parking areas.

The project includes a series of new trails and improvements to the existing decomposed granite trail system for accessibility. The new trails are intended to be decomposed granite.

CFS P14 Integrate erosion, flood, and water quality control measures into all City of Austin capital improvement projects.

All water management is to be supported by the adjacent watershed project, which takes into consideration a 132 acre tributary area.

Imagine Austin Related Policies

- CFS P24 Increase the share of renewable energy sources, such as wind, solar, and biomass, used by Austin Energy to generate electricity, including infrastructure for on-site sources throughout the City.**

The pavilion project is exempt from solar readiness due to the small scale. If the budget allows, solar readiness is to be included on the roof surface.

- LUT P29 Increase the use of joint or shared facilities between public safety and other service providers, when possible, to provide residents with efficient services, reduce costs, and maintain public safety infrastructure.**

The pavilion project is to function in conjunction with the existing Phase I building. The pavilion is reducing the rental costs incurred by AARC for large performance events, when a stage and shade structure is currently rented.

Safety and security is paramount on the site have been deeply considered for the site. All entries into the pavilion are visible from the Phase I building. Security feed will be shared with Phase I. Exterior lighting will also improve visibility on the great lawn at night.

- CFS P35 Distribute public buildings where neighborhood services are located and other accessible locations throughout the City.**

The pavilion project is to function in conjunction with the existing Phase I building. The 2019 Vision Plan indicates further public development on the site in addition to the adjacent watershed project.

The pavilion project is acting as a centrally located piece, or linchpin, of the whole campus.

- CFS P36 Improve multimodal public transportation access to the City's public buildings and facilities, including the Austin-Bergstrom International Airport.**

There are plans to improve the bikability of Cameron Road at this location. The existing facility has outdoor bike storages for the campus. An existing bus route exists along Cameron Road.

- CFS P37 Integrate public buildings and facilities into active, walkable, mixed use neighborhoods and complete, healthy communities.**

The pavilion project includes new accessible trails connecting to an existing trail network in the great lawn. The adjacent watershed project also includes a new network of trails on the site and pedestrian connections to the Rutherford campus to the south via two bridges with an urban trail along Little Walnut Creek to Clear Creek Drive.

- CFS P38 Reduce energy consumption and waste generation in all public buildings to meet the City's greenhouse gas reduction and zero waste goals.**

The pavilion's energy consumption is minimal, as the majority of the pavilion is exterior, to be lit using energy conserving LED fixtures. Performance events are supported with temporary theatrical and AV equipment. In close proximity to the surrounding live oak trees, much of the facility is shaded during the day. The light silver/grey tone of the exterior material will reflect much of the hot summer sun throughout the year.

Imagine Austin Related Policies

CFS P39 Develop public buildings and facilities that create healthy work environments and educate the public about energy-efficient, sustainable building, and greening best practices

The pavilion is pursuing SITES certification, which includes educational or interpretive elements that draw attention to and explain sustainable features or processes of the site design, construction, operations, or maintenance.

The pavilion interior spaces are not regularly occupied but will work for achieve COA Baseline Sustainability measures where applicable.

CFS P44 Feature superior design in parks and recreational facilities and include opportunities for public art and sustainable design solutions.

The pavilion form is expressive and dynamic, influenced by the traditional folding of paper. A singular material of wood rainscreen reflects the textures and tonality of the surrounding live oak trees. The pavilion is custom designed as a sculptural piece in the great lawn. Funds have been set aside for an Art In Public Places projects in the great lawn to accompany the pavilion.

S P14 Locate emergency services within close proximity to all neighborhoods and continue to improve community outreach and relationships between police and neighbors.

The pavilion project is making no changes to the existing fire lane. Emergency services are not a portion of this project.

S P25 Increase sidewalks and bicycle lanes in neighborhoods to create safer routes to schools, parks, and transit stops.

The pavilion project includes the expansion of the existing walking trails system in the great lawn. Biking storage exists on the site at the Phase I building. Biking lanes are planned along Cameron Rd, which is currently extremely uncomfortable for biking, but this is outside the scope of this project.

C P16 Increase the availability of significant public art to designate districts and/or their entrances and to assist visitors in navigating the area.

The pavilion's sculptural form is intended to act as a marker on the site for orienting and navigation. "Let's meet at the pavilion."

C P17 Define Austin's sense of place through high standards for architecture and urban design, public art, public spaces and parks, and arts education.

The pavilion design is meant to evoke a "TexAsian" spirit. This term was developed during a series of engagement sessions with PARD and the AARC team, meaning to pull from respectful, diverse, inclusive, and appropriate Pan-Asian influence through a lens of local Texan influences. A unique confluence of these influences connect the pavilion to Austin and the greater region as well as the histories and material culture of Pan-Asian communities.

TRAHAN ARCHITECTS

NEW ORLEANS / NEW YORK

CONTACT

David Sweere

dsweere@trahanarchitects.com

646 661 6633