

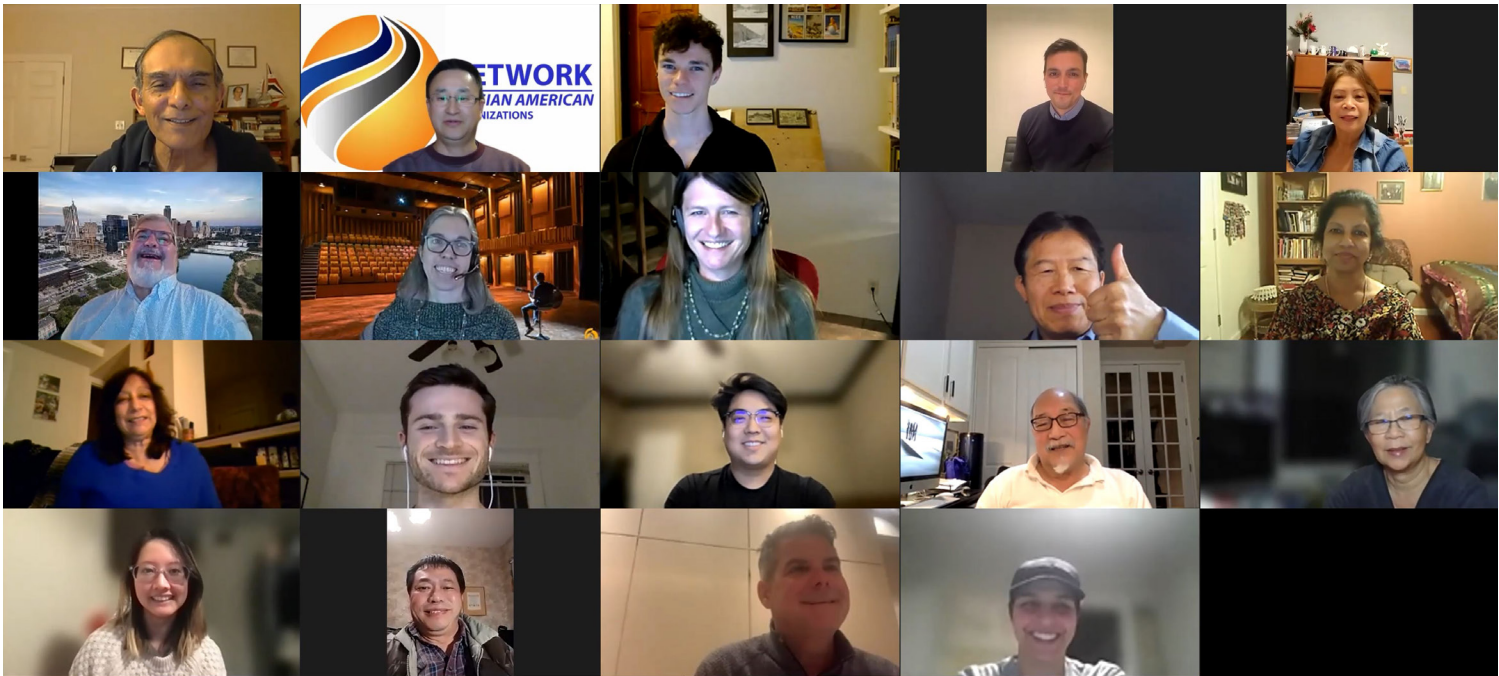


Asian American Resource Center Pavilion

Design Commission Project Review Application
Appendix II - Community Engagement Documentation
December 02, 2024

Community + Stakeholder Engagement

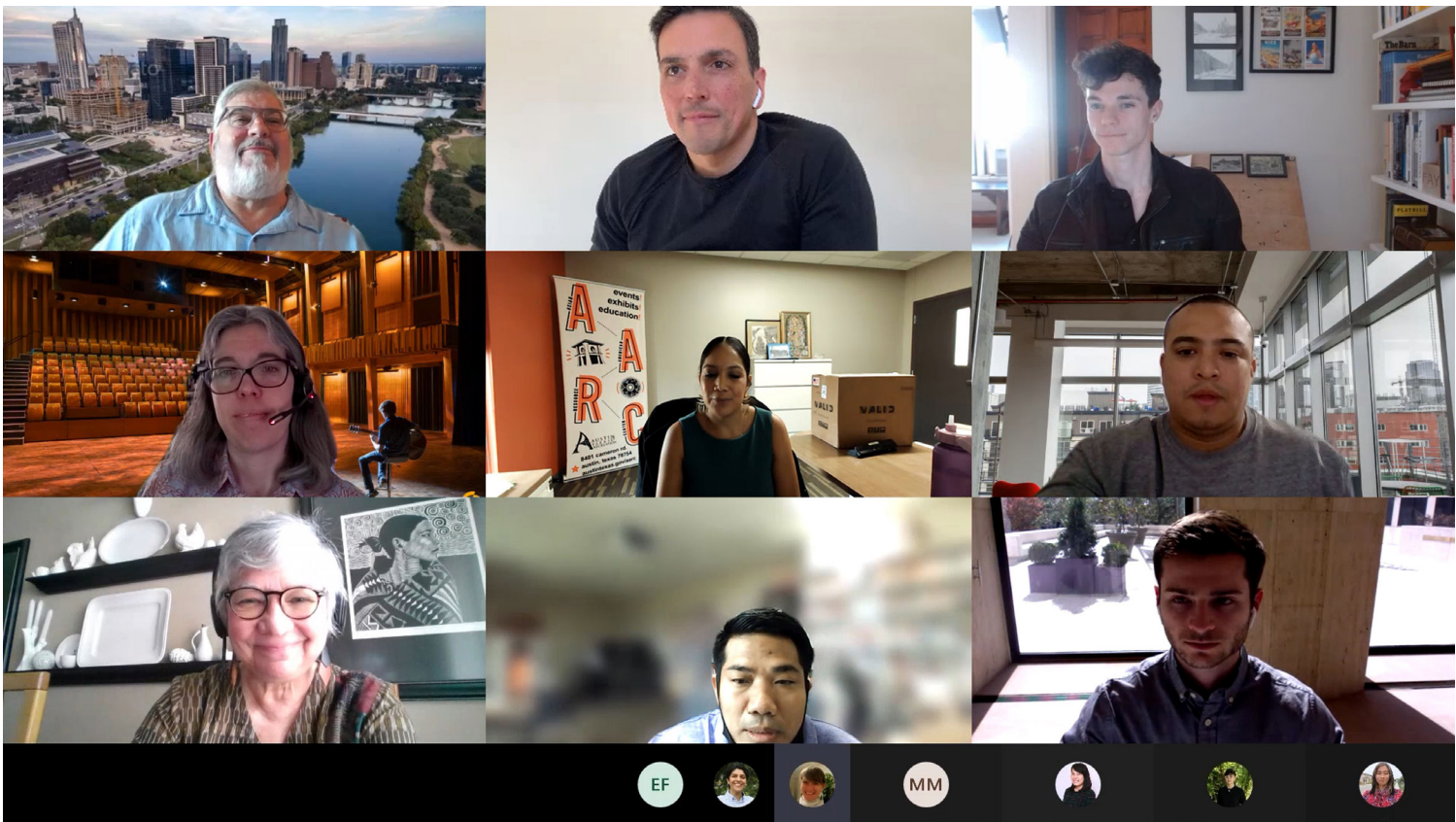
Performing Arts Center Project



NAAO Community Engagement Meeting JAN 26, 2022



Community Engagement Kickoff Meeting MAR 29, 2022



AARC Staff Engagement Meeting JAN 27 2022



Community Engagement Kickoff Meeting MAR 29, 2022

Community + Stakeholder Engagement

Performing Arts Center Project



AARC CelebASIA Engagement MAY 14 2022



AARC Design Charrette JUN 17 2022



AARC CelebASIA Engagement MAY 14 2022



AARC Integrated Design Charrette AUG 08 2022

PROJECT GOALS

1. The building and campus should have a **Sense of Home for the Community.**



2. **Access and Inclusivity** are critical aspects of the project.



3. The building should harbor **Cross-Cultural Exchange**



4. The building should focus around **Performing Arts and Artist Cultivation.**



5. The building should act as a **Hybrid for Performances and Community Events.**



6. The building should be **Accessible Beyond Performance/Event Times.**



7. **Appropriate, Inclusive and Respectful Influences of Asian Culture**



8. The building should have a **Simple Aesthetic and Natural Light.**



9. The project should have an **Environmental Response.**



NAAO	JAN 26, 2022
AARC Staff	JAN 27, 2022
AAQoL	FEB 08, 2022
AARC Staff	FEB 08, 2022
AARC Creatives & Artists	FEB 08, 2022
AARC Staff Written Response	FEB 15, 2022
Community Kickoff	MAR 29, 2022
Community Survey Results	MAR 01-APR 11, 2022

THEATER

1. Performance & Community Events



2. Flexibility - Stage



3. Flexibility - Seating



4. Flexibility - Acoustics



5. Full Sound Board



6. Control Booth

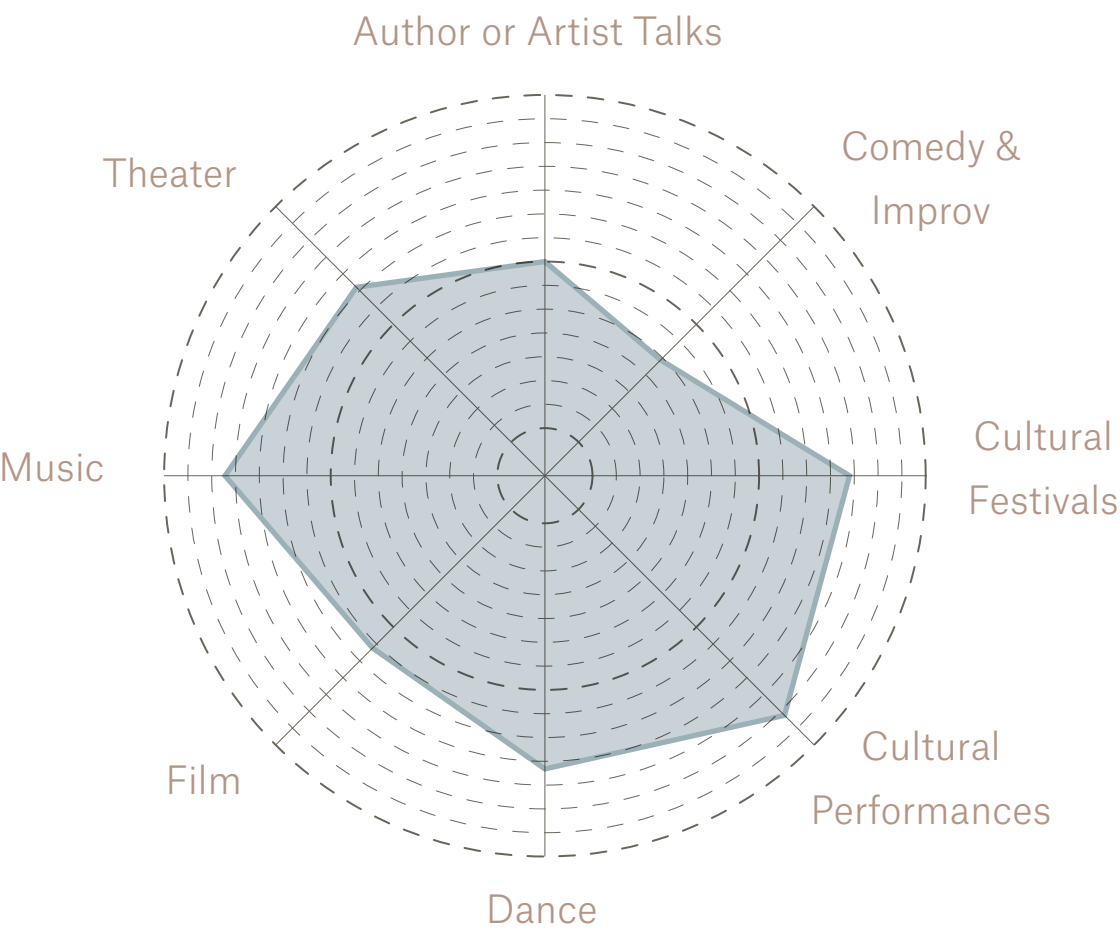


NAAO	JAN 26, 2022
AARC Staff	JAN 27, 2022
AAQoL	FEB 08, 2022
AARC Staff	FEB 08, 2022
AARC Creatives & Artists	FEB 08, 2022
AARC Staff Written Response	FEB 15, 2022
Community Kickoff	MAR 29, 2022
Community Survey Results	MAR 01-APR 11, 2022

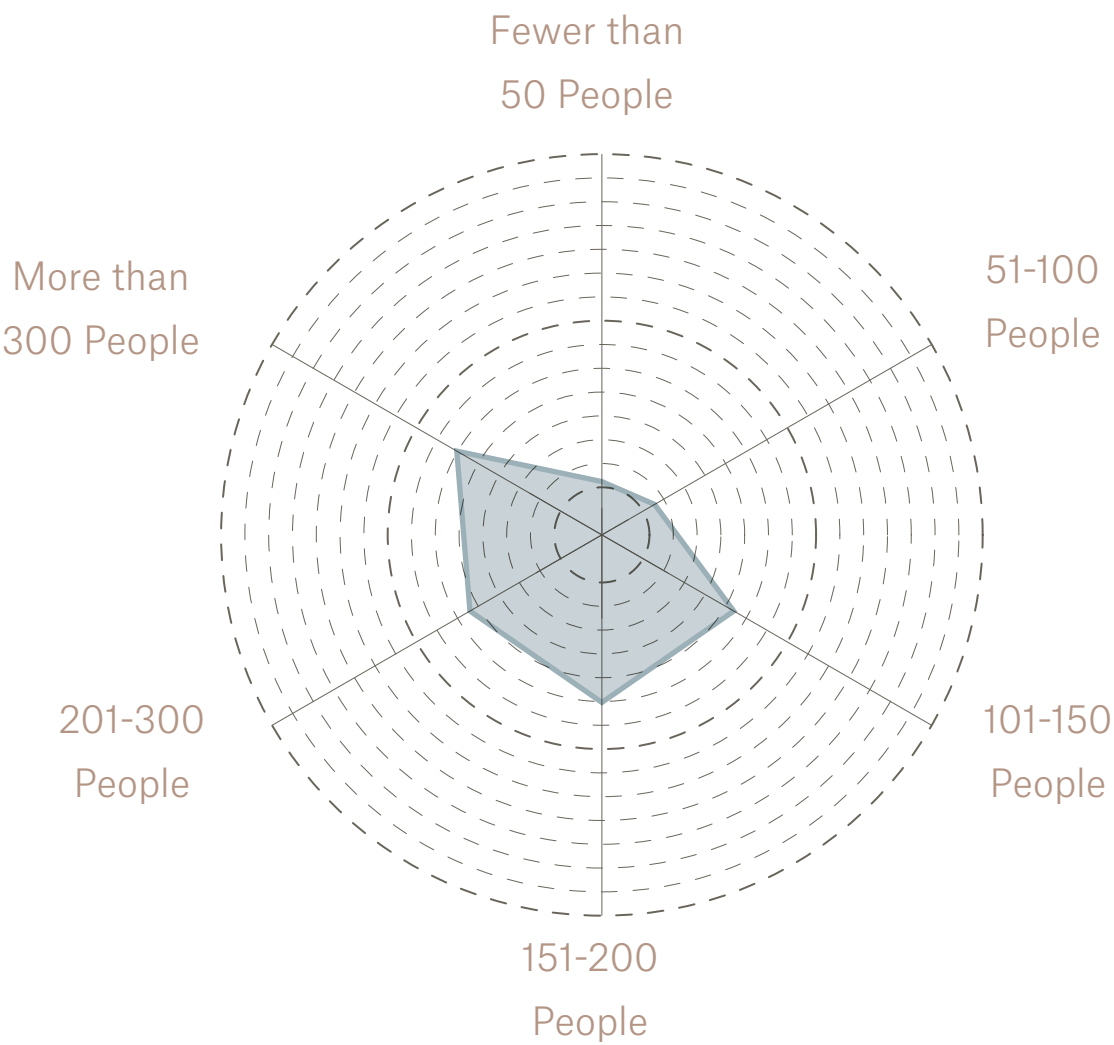
Community + Stakeholder Engagement

Performing Arts Center Project - Community Survey Results - 2022

What types of performances would you like to see or participate in at the new theater?



If you hope to host events in the new theater, what size of audience would be ideal?



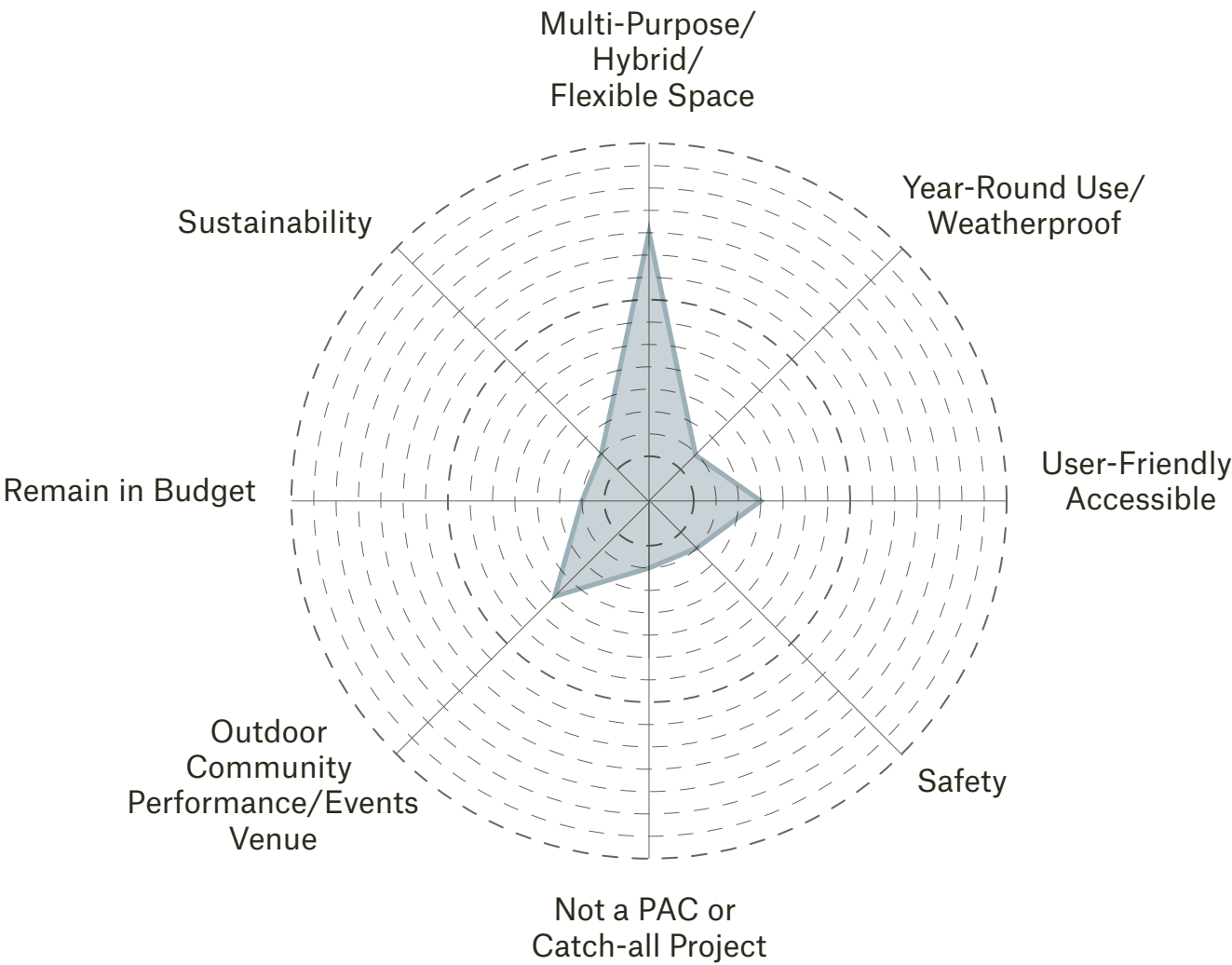
Community + Stakeholder Engagement

Performance Pavilion Project - Visioning - 01-07 March, 2024

- AARC Staff / PARD / COA
- AAQoL Commission Working Group

1. What are your primary goals for the AARC Performance Pavilion?

- A flexible space that staff and community members can use to put on small to medium programs/events
- To provide a flexible space for the AARC to host performances and other activities which can occur there. The primary goal from my standpoint is to ensure we remain in budget.
- Community and rental space performance space as an alternative to the ballroom and classroom spaces.
- Build a multi-purpose pavilion that can be used year-round and deter the abuses of weather and people experiencing homelessness.
- Space that will give staff and community members flexibility when producing programs/events. A space that is accessible from a facility, financial, and tech perspective.
- To create an accessible and sustainable space for AARC programming and for everyone to use.
- Provide adequate space for special outdoor community events at AARC.
- A gathering space where programming can take place outdoors: Artists talks, Luncheons, Performances, Workshops, etc.
- Allow outdoor cultural events that include live music and dance performances (expected to be daytime events); Allow movies at night.
- The pavilion is a safe and comfortable place to be day + evening - appropriate amount of light to great lawn area, interior is air conditioned, has wifi, power, water, sewage.
- Outdoors venue for medium size performance with good acoustics and backstage area so the stage is professional.



Community + Stakeholder Engagement

Performance Pavilion Project - Visioning - 01-07 March, 2024

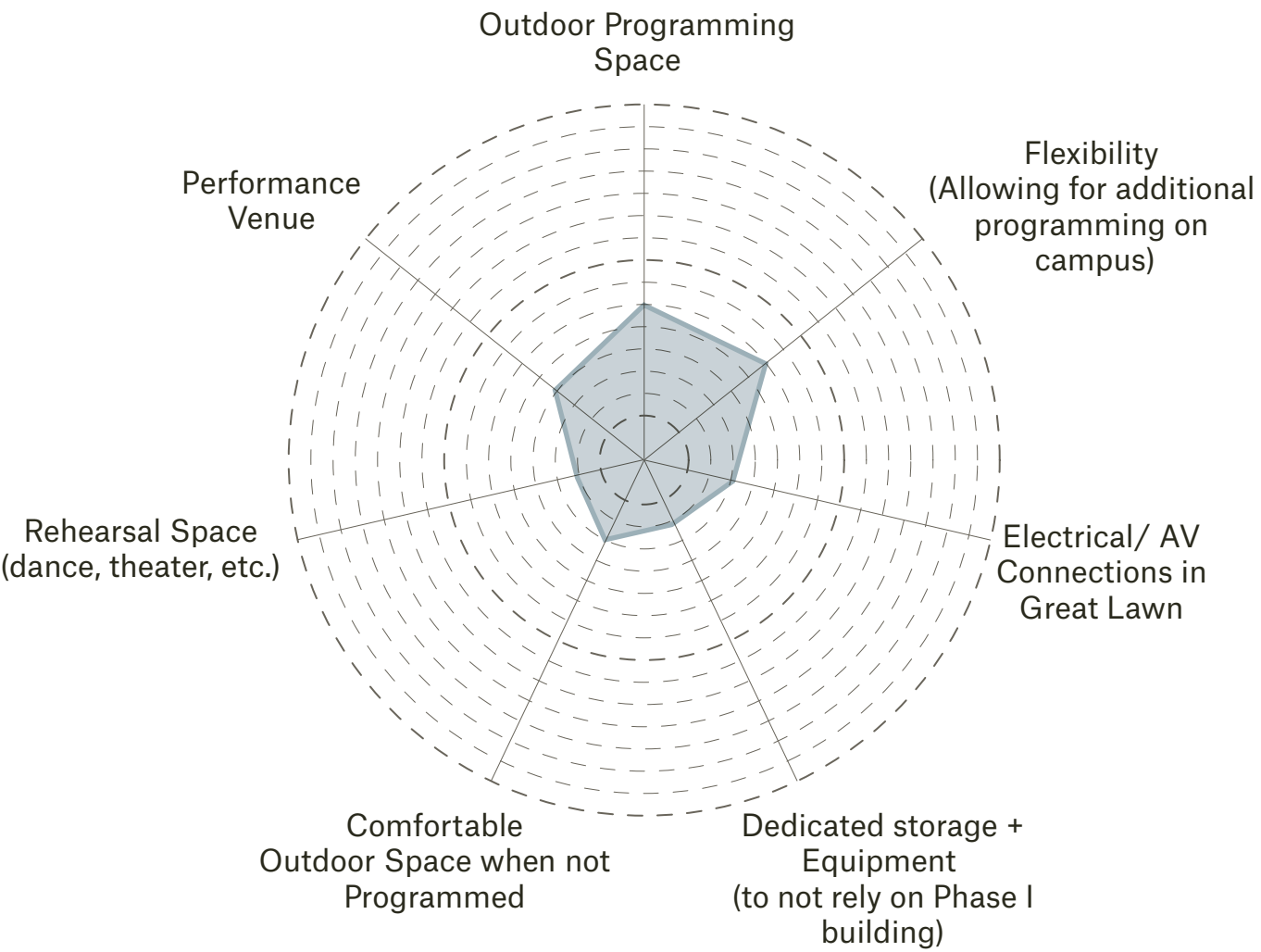
- AARC Staff / PARD / COA
- AAQoL Commission Working Group

2. How should the Performance Pavilion improve/add to AARC’s current programming?

- The pavilion would improve AARC programs by providing programming outdoor space that is intimate and private and allow regular usage to all AARC grounds.
- The flexibility is paramount in order to allow that AARC’s needs to be met.
- This space should provide flexibility to current cultural programming and break barriers of our current limitations. We would also like it to serve as an electricity connection for our annual events.
- The pavilion will add a much-needed performance venue to the AARC as well as a space for rehearsal. These were the highest priorities of our public in community engagement.
- The pavilion should improve AARC programs by giving us a space that will invite the community to connect intimately, through smaller but impactful events. It would give the facility breathing room and free up the ballroom for larger events.
- The Performance Pavilion should provide a permanent structure that the AARC can use for existing outdoor programming.
- The pavilion should improve the existing outdoor space at AARC.
- The pavilion should be a comfortable place where staff can schedule various events or activities.
- Allow for bazaar type events with vendor stands, concession booths.
- The pavilion needs its own dedicated storage, equipment, and single stall bathroom (which won’t

be open unless pavilion is activated or rented). This will allow the pavilion to be a standalone space independent of Phase I. Ideally, a rental or program could be activated while Phase I stays closed. We want to minimize having to borrow Phase I equipment/ supplies. The pavilion should not be a redundant space that competes with the AARC Ballroom or upcoming performing arts center in programming scope or size. So while we want it to have AV capabilities for music and performances options, those needs are fulfilled by the ballroom and future PAC. Instead, the pavilion needs to have its own purpose and identity for both in-house program + rental needs + be a performance space. Day in and day out, it just needs to be a weatherproof space for gathering, to run a class, show a film, host a staff retreat. When not programmed, it should be an inviting space to hang around, provide shade.

Stadium seating would make programs more visible vs. current AARC seating. Current programs have limited stage space and ceilings are too low for many performances.



Community + Stakeholder Engagement

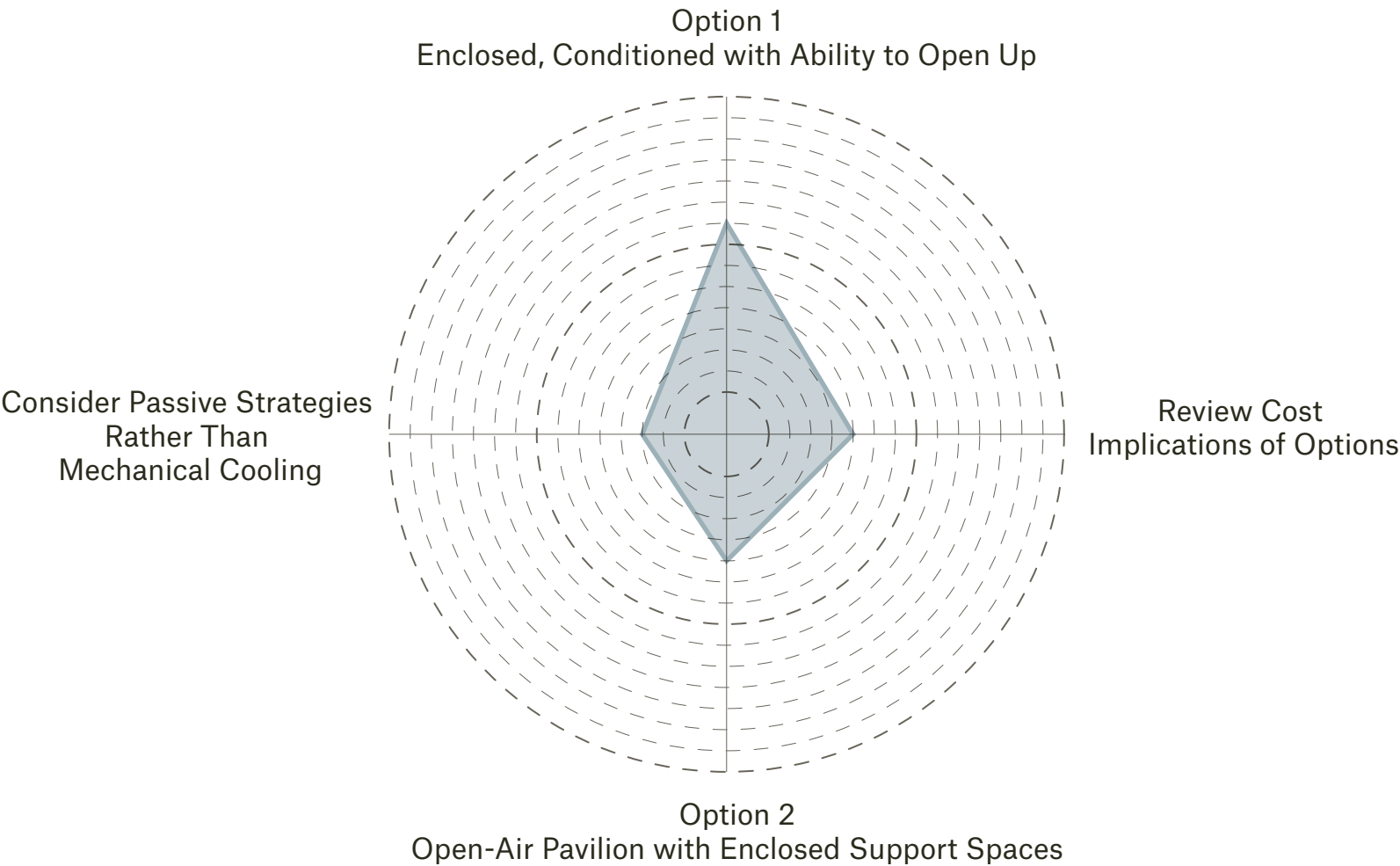
Performance Pavilion Project - Visioning - 01-07 March, 2024

- AARC Staff / PARD / COA
- AAQoL Commission Working Group

3. Should the Performance Pavilion be (1) an enclosed, conditioned space that can open up for exterior performances or (2) an open-air space and stage with enclosed support spaces?

- Option 1 - enclosed conditioned space that can open up for exterior performances
- The latter would be preferred by AARC, but we are not sure the budget can support having the enclosed space as conditioned.
- An enclosed,conditioned space that can open up for exterior performances
- I believe that the Pavilion should be enclosed so that it can be used year-round and deter break-ins. With Austin’s weather, an outdoor pavilion cannot be used December through February or July through September. A multi-purpose pavilion can provide a safe space for rehearsal, ping-pong, or large meetings. The space could be minimally conditioned with a simple ‘split’ run from solar power. Heat and air conditioning is not required all parts of the year like a pool house. If the building had a cinder block core on three sides it would deter break-ins. The building will need a security camera and a security system.
- An enclosed conditioned space that can be opened up for exterior performances as needed.
- Open-air space and stage with enclosed support spaces. It would be a great opportunity to showcase creative sustainable solutions and practices for climate conditions for the public to see and learn.
- Open-air. Flintco should provide ROM costs to help with decision making.
- The performance pavilion should (1) be an enclosed

- space, that can be opened up for exterior performances
- Covered stage area, open air lawn seating
- The pavilion will meet the internal and external needs of the community if it can function as an enclosed and open space. The enclosed space should include meeting space, storage, restroom. It should be a simple box congruent in size to the outdoor space. When closed, it’s a medium-sized space (50+ seats, 2-3 ping pong tables, or 5-7 piece rehearsal space. When opened, the interior should seamlessly connect to the outdoor ‘stage’ area. For example, if hosting musical performance, the hybrid pavilion could be divided by a curtain. The interior would function as back of house for production, performers, props, etc.
- When the Phase II pavilion is funded in the future, it will provide an enclosed, conditioned space. If there isn’t enough funding to do (1) yet, then (2) should be implemented with extra funding to address environmental needs, such as portable heaters and pest control.



Community + Stakeholder Engagement

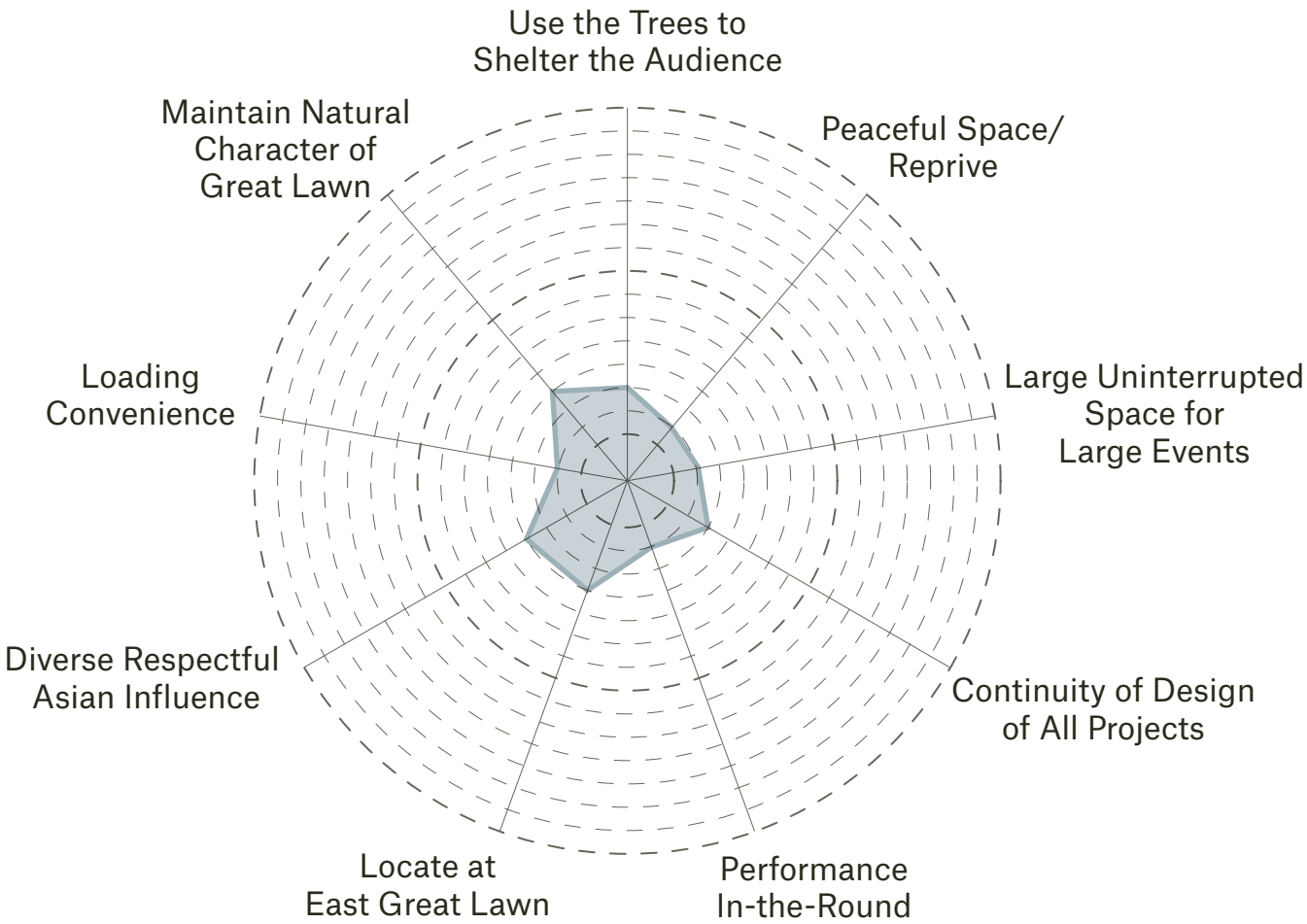
Performance Pavilion Project - Visioning - 01-07 March, 2024

- AARC Staff / PARD / COA
- AAQoL Commission Working Group

4. How should the Performance Pavilion relate with the existing building, live oak grove, Phase II Performing Arts Center, + the Watershed Project?

- A design that can incorporate phase 1, 2, + live oak grove, provide a calming and peaceful environment and does not have one ethic/cultural influence
- Continuity of materials and design elements threading through all three projects will allow the site to flow.
- It may replicate the point of view when overlooking the great lawn from the lotus. This pavilion could combine the center, lotus, senior garden, and oak trees to create a space for creativity and not take away from the nature elements the space will occupy.
- The exterior service should relate in color and surface to both the existing building and the proposed building. I think there are certain advantages to facing the building to the south such as directing sound away from the housing complex to the north of the AARC. Also, audience members can sit under the trees. When the pedestrian bridges are built the audience members will enter the "house" from the south which will be less disruptive. Most of the festival activities happen in the south parking lot. There is more width to play with, as well. But if it were in the east part of the Great Lawn, that would be okay too.
- I would like the design to be integrated into the great lawn, it can look like either a sanctuary, to provide creative outlet, inspire physical or emotional reprieve. Our current building has strong East Asian elements - ideally this space reflects other design elements of asian cultures
- Mainly live oak grove, but always in consideration of surrounding objects.
- Structure should respect existing trees and be a gateway or

- headwaters to watershed project.
- I think the great lawn would be a good space to integrate the performance pavilion - it would have decent proximity to the main building and not overlap with plans for phase II and the watershed project.
- Specifically support open air events.
- The AARC represents multiple Asian American communities. Phase I is very east Asian aesthetic. Phase II is very contemporary Asian. The pavilion should represent S. Asian or SE Asian design elements. It should provide shade from the Texas sun. Many of the TexAsian inspo from Phase II design process could work with this space. The pavilion would work best at the East end of the great lawn facing Phase I. As mentioned, this pavilion will be central to campus and be the most accessible building to the newly developed watershed project. The pavilion should activate the entirety of the great lawn. Movies and music will encourage spectators to bring picnic blankets, sit under trees, lawn chairs. As mentioned, given our current existing spaces and capacity, the AARC doesn't foresee the ability to activate the pavilion as a 300-500 seated outdoor performance venue for large-scale productions.
- Opposite the existing building, near the existing road at the far end of the great lawn , framed by the live oak grove with multiple control access through the trees. I haven't seen the Watershed project recently, but the performance pavilion should be tied into the primary design



Community + Stakeholder Engagement

Performance Pavilion Project - Visioning - 01-07 March, 2024

- AARC Staff / PARD / COA
- AAQoL Commission Working Group

5. What types of events does your organization generally present throughout the year?

- We provide a variety of programs including film screenings, art/craft workshops, wellness and education classes, storytime, health fairs, panel discussions, exhibit receptions, book clubs, and many others.
- Events at the AARC include cultural, city, theater rehearsals, festivals, teen programming, summer camps, exhibits, senior programming, movies in the park, and workshops
- The AARC produces a music series, outdoor festivals with music and dance.
- Our programs at the center have a wide range: art workshops, exhibit receptions, plays, camps, acoustic performances, poetry, panel discussions, festivals, story time, community resource fairs.
- The AARC puts on large scale community and cultural events, and festivals, along with more intimate gatherings and outreach events like exhibit receptions, workshops, talks, info sessions, etc.
- Cultural dances, live music, theater, poetry
- The AARC produced 2 large outdoor programs each year (1,000-2,000 people). It hosts weekly senior and youth programs with about 100 people daily. It hosts 2-4 rentals weekly, with one being 500+ on weekends. We host film screenings with about 75 participants. We host 2-4 music series with 75-100 attendees. We host 2-4 medium activity programs such as yoga, tai chi, Bollywood dance with about 30-60 attendees.
- Cultural performances. Need more opportunity for small cultural performances with limited resources

- Movies in the Park
- Art/Craft Workshops
- Wellness + Education Classes
- Storytime
- Health Fair
- Panel Discussions
- Exhibitions
- Exhibit Receptions
- Book Clubs
- Theatrical Performances
- Acoustic Performances
- Theatrical/Dance Rehearsals
- Teen Programming
- Senior Programming
- Summer Camps
- Outdoor Music/Dance Festivals
- Yoga
- Tai Chi
- Bollywood Dance

Community + Stakeholder Engagement

Performance Pavilion Project - Visioning - 01-07 March, 2024

- AARC Staff / PARD / COA
- AAQoL Commission Working Group

6. Number of Performances/Events per year?

- in-house and collaborations - 40 to 60 events/programs
- This can have a dynamic range including small events adding up to 50-75 events
- 10 perhaps, with rentals
- in house/education team: 40-60 programs/events. This isn't including AAP usage, but can be open for AAP.
- ~ 60 in-house programs
- 6-8
- Currently, we do not host a lot of theatre productions. Despite community aspirations, the AARC does not experience a lot of requests to hold theatre productions at our site. This is because we have daily programs that utilize the ballroom, great lawn, and classrooms. This does not allow a production to 'camp' out for extended amount of time. The AARC does not intend to change this as we were founded to provide these senior, youth and intergenerational wellness programs. Thus, our spaces are relegated to 1-2 night programs for all our spaces (classrooms, ballroom, exterior).

40-75 events/programs

Theatrical performances are limited due to the requirements of production spaces to remain in place for extended periods of time + AARC's mission to provide intergenerational programs requiring flexible, frequently utilized spaces.

What is the meaning of AAP?

Artist Access Program, allows people to apply for free rehearsal space.

What length of time do you foresee to make the Performance Pavilion available to productions?

It depends on interior space, including storage, we would be able to host productions at least through a three-day weekend. We've never hosted anything longer than that.

What percentage of the Performances are during the day vs. the evening? Do you foresee that changing with the addition of the Performance Pavilion?

50/50 daytime/evening. Daytime music, evening collabs for rentals. Performances in the evenings, many rehearsals during the day.

Community + Stakeholder Engagement

Performance Pavilion Project - Visioning - 01-07 March, 2024

- AARC Staff / PARD / COA
- AAQoL Commission Working Group

7. How many audience members should be accommodated in a seating area? Is protection from the elements required?

- indoor max of 45-50, outdoor max of 150
- Up to 300 people on the Great Lawn
- Even in the early evenings, it can be quite sunny and hot. Protections from the elements is preferred. I have seen up to 2000 people in the entire outdoor area but most of the time it is 500. All of these are one-day events.
- Indoor: Max 40, Outdoor: 150 in the immediate outdoor area; protected indoors,outdoor no - maybe can be designed to maximize shade during summer
- 50 seats indoor, 150 outdoor; protection from the elements would help with use of space and schedule/ event flexibility.
- 300 people. Keep lawn open space.
- Seating in the interior of the pavilion should amount to around 50 (medium sized). This is the current gap in our space. Seating should be relegated to the great lawn in the form of lawn chairs, blankets, and the occasional theatre style seating (which would have to come from a rental company; we wouldn't have space to house our own comprehensive seating.) The lawn should be able to hold 200-300 people, or 50 blankets.
- 350-500

Interior Space should provide seating for 50 people.

Exterior Space should provide space for 200-500 people, median of ~300 people.

Festival events can host upwards of 2000.

Community + Stakeholder Engagement

Performance Pavilion Project - Visioning - 01-07 March, 2024

- AARC Staff / PARD / COA
- AAQoL Commission Working Group

8. What is the largest anticipated production to be accommodated?

- 200-250 max for outdoor pavilion space
- CelebrAsia, most likely
- Up to 300 people on the great lawn
- CelebrAsia
- 200-250 if only pavilion is activated
- 200 for pavilion only; 600-1000 for CelebrAsia/entire campus activated
- Dance performances, 7-10 groups of 10-20 Dancers, 300-350 audience
- The largest current program is CelebrASIA which attracted 2,000 people over the course of 4 hours. However, only around 300-400 attendees stayed for the duration of our 90-minute cultural performance. We anticipate crowds to not be larger than that on the great lawn. Again, we just don't have the parking for more than that. For reference, the most popular setup for our ballroom rentals is banquet style which allows for 300 seats. At that count, both parking lots hit capacity. People then park illegally at the church across Camerion Rd, off Clear Creek, or a quarter mile away at another city department. In the future, we would never anticipate more people on our campus than that. 2,000 people with all spaces activated.
- 500

How many and what types of performers are anticipated for productions/performances/events on stage at one time?

- Musical, dance, aerial type, any artistic performance can be possibilities for the stage.
- 20 is a lot of people on the stage. 12-15 performers seems appropriate. Lion Dance is the largest performance (elementary kids) 15 + equipment.
- We get complaints that the stage is too small. 16x24 is the current stage.

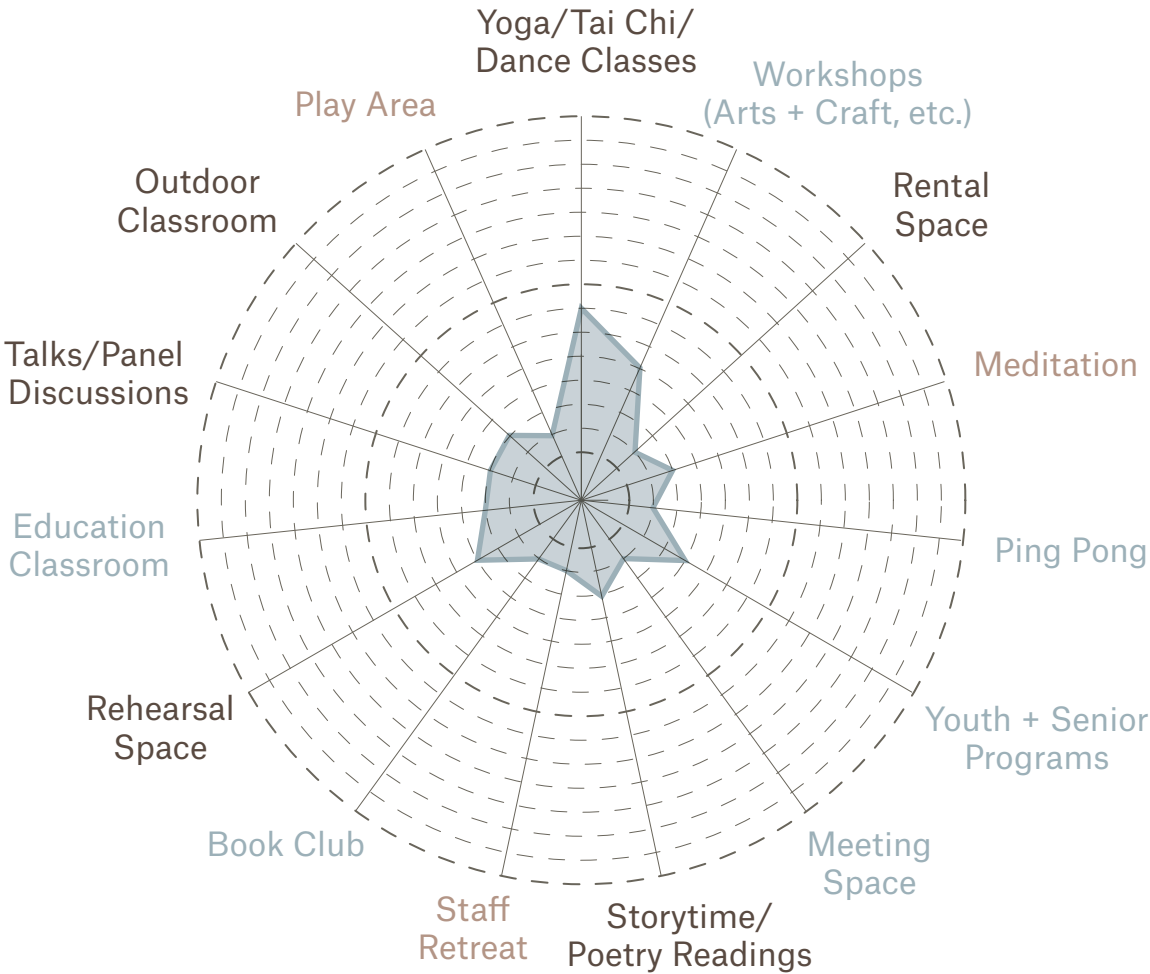
Community + Stakeholder Engagement

Performance Pavilion Project - Visioning - 01-07 March, 2024

- AARC Staff / PARD / COA
- AAQoL Commission Working Group

9. What uses could/should the Performance Pavilion serve during non-performance times?

- Small program and events including yoga/meditations, arts + craft workshops, youth and senior program lunches, storytime, book clubs, education classes
- Outdoor classroom, rehearsal space
- It should serve as rehearsal, yoga, workshop, art, dressing/green room, classroom, and rental space
- Rehearsals, outdoor meetings, ping pong location, summer camp activities
- Mediation space, creative workshops, poetry readings, retreat space, yoga, storytime
- The performance could serve as a space for collective gatherings like exercise/activity sessions, talks meetings, retreats, workshops, etc.
- Rehearsals for theatre group, live music band, dance performances, dance classes, yoga classes.
- The interior should be a medium-sized space appropriate for activities such as staff retreat, summer camp (30 people), meeting space (50 seats), ping pong tables (2-3), yoga and tai chi (instructor on stage, participate on lawn). The idea is that the interior space is for in-house use and rentals. It's not going to be opened unless activated for programming. Only the exterior of the pavilion will be accessible during non-program or non-business hours.
- Play area for kids. Dance classes, yoga classes, Tai Chi classes.



Community + Stakeholder Engagement

Performance Pavilion Project - Visioning - 01-07 March, 2024

- AARC Staff / PARD / COA
- AAQoL Commission Working Group

10. What types of spaces should be provided within/adjacent to the Performance Pavilion? (e.g.: Stage (size), Green Room, Dressing Room(s), Storage, AV Room, Control Room, Washroom(s))

- Open room with rest room with toilet and sink, storage for tables/chairs, simple AV cabinet, utility sink, counter space, mini fridge
- Stage and dressing area. The others can be considered if costs align.
- Storage
- Stage, dressing Room, Storage, AV Room, Washroom; AV equipment can be stored in the circuit room. Operation of sound and lights can utilize wi-fi connected equipment from the house.
- Small/medium stage (like at a bar or coffee house), Storage for misc items/chairs tables, AV cabinet, utility sink, toilet
- Please consider providing a range of costs per spaces for efficiency and so expectations are in alignment with budget.
- Stage, green room, storage, AV Room, control room
- Stage 24x30 ft, dressing room, AV Room desirable, Control Room desirable, Washrooms
- For this space to be functional throughout the year, it needs to have storage and a wash room. It does not need to have a dedicated AV room (maybe just a panel). On rare occasions will this space be used for theatre productions. Thus, it doesn't need a green room, dressing room, control room. If we're able to get the hybrid inside/outside, the interior can be activated as the back stage with the use of curtains.
- Stage, dressing rooms, AV Room, Control Room, Separate storage space may help a lack of storage at existing building.

- Washroom(s)
- Storage (Tables/Chairs)
- AV Cabinet/Room
- Counter Space
- Refrigerator
- Stage (24x30) (Small/Medium)
- Dressing Room
- Green Room
- Control Area
- Combine functionality of Green Room, Dressing Room, Control Room into a Multi-Purpose interior open space.

Community + Stakeholder Engagement

Performance Pavilion Project - Visioning - 01-07 March, 2024

- AARC Staff / PARD / COA
- AAQoL Commission Working Group

11. What production elements should be integrated into the facility vs. brought to the facility during events?
(e.g.: Stage Lighting, General Event Lighting, Speakers, Monitors, Microphones, AV Connections, Control Equipment, Rigging, Projector, Projection Screen)

- Basic AV like microphones, speakers, basic lighting, projector/screen, ability for wifi/internet/phone and security connection
- It may be wise to include infrastructure for these items if the project budget can support that portion. Or, to even plan ahead for these items to be installed at a later date
- Acoustic Element consideration, Wifi, Electricity
- All listed, Rigging as just a grid, Projector is less important, Projection screen is less important.
- Connections for speakers, microphones, basic AV, basic lighting, projector/screen can be brought in from phase I, ability to wire for security/phone/wifi, ambient lights. Think simple coffee house production
- Integrated: stage lighting, general event lighting, speakers, monitors, microphones, av connections, control equipment, projector screen, seating
- Stage Lighting, general event lighting, AV Connections; Speakers, monitors and Microphones desirable
- The AARC would like for the pavilion to have dedicated power, maybe a wall unit, general lighting, and house speakers. Ideally, it also has curtain or projector screen system (protected from the elements). It should have enough power to tie in things like lights, speakers, or run power to a 30amp food truck. Because this corridor of town experiences a lot of unhoused people, equipment should be portable. The pavilion should have

- the power and infrastructure for concerts, but those things will be brought in (in-house or rentals). I worry that expensive equipment will be stolen or damaged by extreme weather.
- Stage lighting integrated, General Event Lighting brought in, Speakers installed, but AV equipment and screens brought in for specific events (eye toward security for open spaces)

- Wifi
- Phone
- Security
- Power (Food Truck/Industrial Fans)

- Develop an infrastructure for potential expansion, starting with a basic set of production elements.
- Expensive equipment should be portable or protected from damage by weather and vandalism.
- Equipment should be accessible for ease of use.

Community + Stakeholder Engagement

Performance Pavilion Project - Visioning - 01-07 March, 2024

AARC Staff / PARD / COA
AAQoL Commission Working Group

12. What additional programming and landscape elements should be included/considered for the Event Lawn area within the Limit of Scope? (e.g.: Shape/Picnic Pavilion, Fixed/Landscape Seating/Benches, Walking Paths, Electrical Connections, Additional Planting, Community Garden, Public Washroom(s), Concessions, Public Art)

- Space for community garden, public art, fixed landscape seating/benches + walking paths that can all be connected together with ambient lighting
- A seating area would be idea. A few of the existing paths are not TAS compliant and will need to be rebuilt. Art in Public Places is a part of the project. Electrical connections would also be ideal if the budget can support it.
- Loading Access, Nature inspired architecture, weather resistant
- None of these items should be prioritized. Some can be on an add-alternate list. Walking Paths, Electrical Connections for Ad Hoc outdoor lighting
- Fixed landscape seating, waling paths (that we can light up), electric connections, misters, public art that helps connect phase I and this space visually, native flowers/shrubs, emphasize on natural elements.
- Showcase how a sustainable design can aid in hot climates, where A/C is not the only solution. Additional tree planting and seating would be beneficial.
- Consider seat walls, Consider planting under-story trees for succession. Most trees in the courtyard are mature. This project will be SITES project or a LEED project to meet COA requirements. If this is a SITES project it will be critical to follow an integrative design

approach and consider LOC early along with Vegetation and Soil protection zones. 12" of impacted soils must be restored as a part of SITES.

Lights when it gets dark, places to showcase art by community members/local artists

Walking paths, electrical connections

We are in desperate need for electrical connections across the great lawn. We could use some landscaping around the perimeter of the pavilion to make it attractive 360. The washroom would not be public. It would only be for renter or in-house programmers. We would usher people to utilize Phase I facilities. I would like to see public art space on the exterior of the pavilion, or incorporated into the great lawn. I could see the inclusion of a few benches, but I want the lawn to stay free and clear of obstacles as it's the only open and flat space we have in the entire campus. Perhaps the inclusion of our existing stone blocks as seating in key areas.

Hope walking paths incorporated in Watershed project. Public washroom desired if it can be secure. Concessions available per event. Limited landscape seating with benches (more than currently exist).

Electrical Connections General lighting for safety and night utilization Minimal Intervention to Maintain Open Natural Character of the Great Lawn Benches/Seating Public Art Restore the Lawn and Walking Paths

Is there anything in the Great Lawn area that should be maintained, as-is, such as the exercise equipment area?

We can look into the end-of-life cycle of exercise equipment area

Not many folks use it.

It's just kids that use it and an eye sore

