

TREE LIST

MAP OF TOPOGRAPHIC SURVEY OF
THAT (5.77 ACRE) TRACT OF LAND OUT OF THE GEORGE W.DAVIS SURVEY NO.15 IN TRAVIS COUNTY, TEXAS,
WHICH WAS CONVEYED TO JAMES WARREN KNOX BY DEED RECORDED IN VOLUME 11857 PAGE 853
OF THE REAL PROPERTY RECORDS OF TRAVIS COUNTY, TEXAS.

Tag No.	Description	
6001	15" Live Oak	
6002	19" Cedar	
6003	13" Elm	
6004	9"-15" Live Oaks; Radius 2'	
6005	12" Live Oak	
6006	10" Live Oak	
6007	13" Live Oak	
6008	12" Live Oak	
6009	13" Live Oak	
6010	8" Live Oak	
6011	11" Live Oak	
6012	Five 6" - 12" Live Oaks; Radius 2'	
6013	Two 10" Live Oaks	
6014	9" Live Oak	
6015	Two 10" Live Oaks	
6016	10"-13" Live Oaks; Radius 3' x	
6017	11" Live Oak	
6018	10" Live Oak	
6019	12" Elm	
6020	Triple 9" and Two 11" Live Oaks	
6021	Seven 5" - 8" Live Oaks; Radius 3'	
6022	Triple 7" and Two 10" Live Oaks	
6023	Twin 9" Live Oaks	
6024	9" Live Oak	
6025	10" Live Oak	
6026	9" Live Oak	
6027	11" Live Oak	
6028	12" Live Oak	
6029	19" Live Oak	
6030	Twin 10" -14" Live Oaks	
6031	20" Cedar	
6032	10" Hackberry	
6033	Twin 8" Hackberry Trees	
6034	31" Live Oak	
6035	19" Live Oak	
6036	16" Live Oak	
6037	11"-12" Live Oak; Radius 2'	
6038	9" Live Oak	
6039	9" Live Oak	
6040	18" Elm	
6041	Twin 10"-13" Live Oaks	
6042	9" & 11" Live Oaks; Radius 2'	
6043	12" Live Oak	
6044	8" & 11" Live Oaks; Radius 1'	
6045	12" Live Oak	
6046	28" Live Oak	
6047	14" Live Oak	

Tag	No.	Description
	6048	8" Live Oak
	6049	11" Live Oak
	6050	15" Live Oak
	6051	15" Hackberry
	6052	27" Live Oak
	6053	27" Live Oak
	6054	10" Hackberry
	6055	10" Hackberry
	6056	Twin 8" Hackberry Trees
	6057	Two 8" Hackberry Trees; Radius 2'
	6058	8" Hackberry
us 2'	6059	12" Hackberry
	6060	12" Tallow
	6061	Twin 8" and 12" Hackberry Trees
	6062	11" Hackberry
	6063	12" Red Bud
	6064	9" Tallow
	6065	13" Ash
	6066	15" Hackberry
	6067	20" Sycamore
aks us 3' aks	6068	21" Ash
	6069	11" Ash
	6070	25" Chinaberry
	6071	30" Catalpa
	6072	19" Spanish Oak
	6073	16" Sycamore
	6074	Twin 20" & 28" Live Oaks
	6075	Two 19" Live Oaks; Radius 2'
	6076	23" Live Oak
	6077	13" Spanish Oak
	6078	8" Catalpa
	6079	14" Pecan
	6080	2"-14" Live Oaks; Radius 2'
	6081	16" Live Oak
	6082	Twin 13" Live Oaks
	6083	15" Live Oak
	6084	10" Live Oak
	6085	Twin 12" Live Oaks
	6086	9" Live Oak
	6087	13" Cedar
	6088	11" Live Oak
	6089	16" Live Oak
	6090	Twin 12" Live Oaks
	6091	18" Live Oak
	6092	11" & Two 8" Live Oaks; Radius 2'
	6093	Twin 8" Live Oaks
	6094	Two 12" Live Oaks; Radius 2'
	6095	12" Live Oak
	6096	14" Live Oak

Tag No.	Description
6097	22" Live Oak
6098	8" & Two 11" Live Oaks; Radius 2'
6099	Five 5" Live Oaks; Radius 2'
6100	Triple 11" Live Oaks
6101	19" Cedar
6102	14" Cedar
6103	30" Live Oak
6104	28" Live Oak
6105	19" Hackberry
6106	17" Hackberry
6107	15" Chinaberry
6108	10" & 15" Live Oaks; Radius 1'
6109	8" & 10" Live Oaks; Radius 1'
6110	10" Hackberry
6111	9" Hackberry
6112	Twin 8" Live Oaks
6113	Four 8" -10" Live Oaks; Radius 2'
6114	8" Live Oak
6115	Twin 10" Live Oaks
6116	15" Live Oak
6117	Twin 8" Live Oaks
6118	8" Elms & 8" Live Oak; Radius 2'
6119	12" Hackberry & 14" Cedar; Radius 2'
6120	Twin 9" Hackberry Trees
6121	14" Live Oak
6122	10" Elm
6123	14" Cedar
6124	9" Elm
6125	13" Live Oak
6126	16" Cedar
6127	Twin 10" Live Oaks
6128	Triple 7"-10"-15" Live Oaks
6129	13" Live Oak
6130	17" Live Oak
6131	14" Chinaberry
6132	14" & 16" Live Oaks; Radius 2'
6133	9" Elm
6134	11" Live Oak
6135	Three 9" Live Oaks; Radius 2'
6136	9" Live Oak
6137	Two 15" Live Oaks (same base) & 13" Hackberry
6138	Twin 8" & 17" Live Oaks
6139	Twin 9" Live Oaks
6140	Two 16" Live Oaks; Radius 3'
6142	34" Cottonwood
6143	Twin 18" Live Oaks
6144	18" Elm
6145	17" Live Oak
6146	18" Live Oak
6147	Twin 25" Live Oaks
6148	21" Elm

ADDITIONAL INFORMATION

- ① $N87^{\circ}02'54''W$ $C=136.69'$
 $A=137.78'$ $R=315.65'$
 $(C=136.69' A=137.78' R=315.65')$
- ② $S80^{\circ}26'19''W$ $31.49'$
 $(S80^{\circ}25'29''W$ $31.49')$
- ③ $S06^{\circ}10'00''W$ $39.39'$
 $(S06^{\circ}10'W$ $39.39')$

A	B
remainder	AUSTIN
AUSTIN	CORPORATION
CORPORATION	(0.02 ACRE)
(6.43 ACRES)	VOLUME 3390
VOLUME 3058	PAGE 1615
PAGE 1907	

TBM A: spindle set in power pole
at 840.28'

TBM B: Chiseled triangle on top of curb at northwest corner of Knox Lane at Running Rope, west side of Knox Lane at 838.08'

Benchmark 1: East side of Chimney Corners: triangle on north end of inlet at southeast corner of Chimney Corners and Greystone Elevation= 797.76'. source: City of Austin.

Benchmark 2: West side of Chimney Corners:
triangle on north end of inlet at southwest
corner of Chimney Corners and Running Rope.
Elevation= 824.61' Source: City of Austin

Orientation for this survey is based on a bearing of S59°36'00"E between points A and B labeled hereon.

This map was completed without the benefit of a current title commitment.
This lot may be subject to restrictions and easements not shown hereon.

Tree "crowns" shown hereon are drawn as a function of trunk diameter. One inch of trunk diameter equals one foot of crown radius.

SCALE: 1"=40'

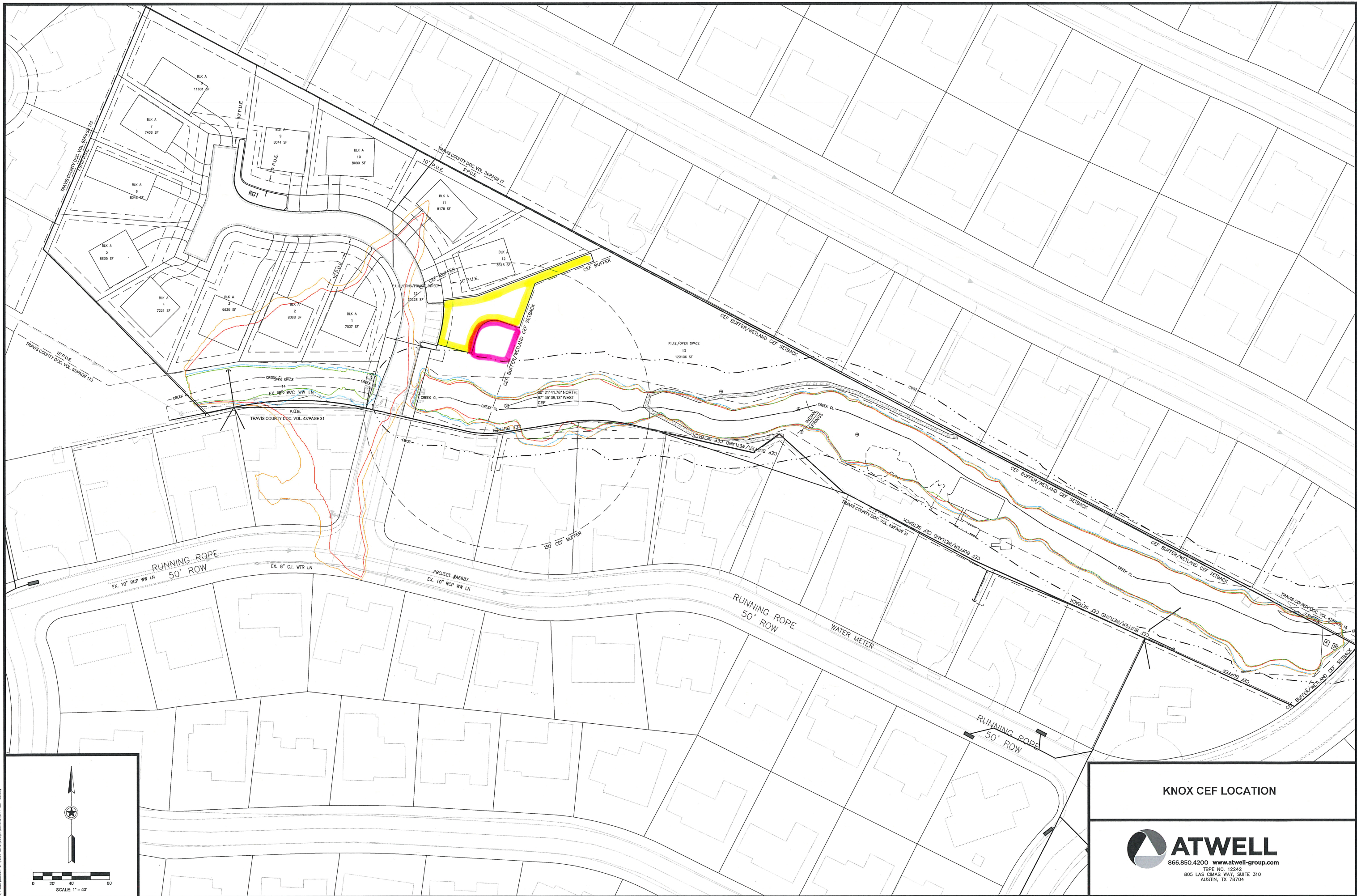
CARSON AND BUSH
PROFESSIONAL SURVEYORS, INC.
1904 FORTVIEW ROAD
AUSTIN, TX 78704
(512) 442-0990

PREPARED: May 16, 2005

BY:

Holt Carson
Registered Professional Land Surveyor No. 5166

© copyright 2005 B747002



KNOX CEF LOCATION

