

Journey With AUS - Airport Expansion & Development Program

Active Projects Update

Airport Advisory Commission
January 2025

Lyn Estabrook

Deputy Chief – Planning & Development

**JOURNEY
WITHAUS**

Table of Contents

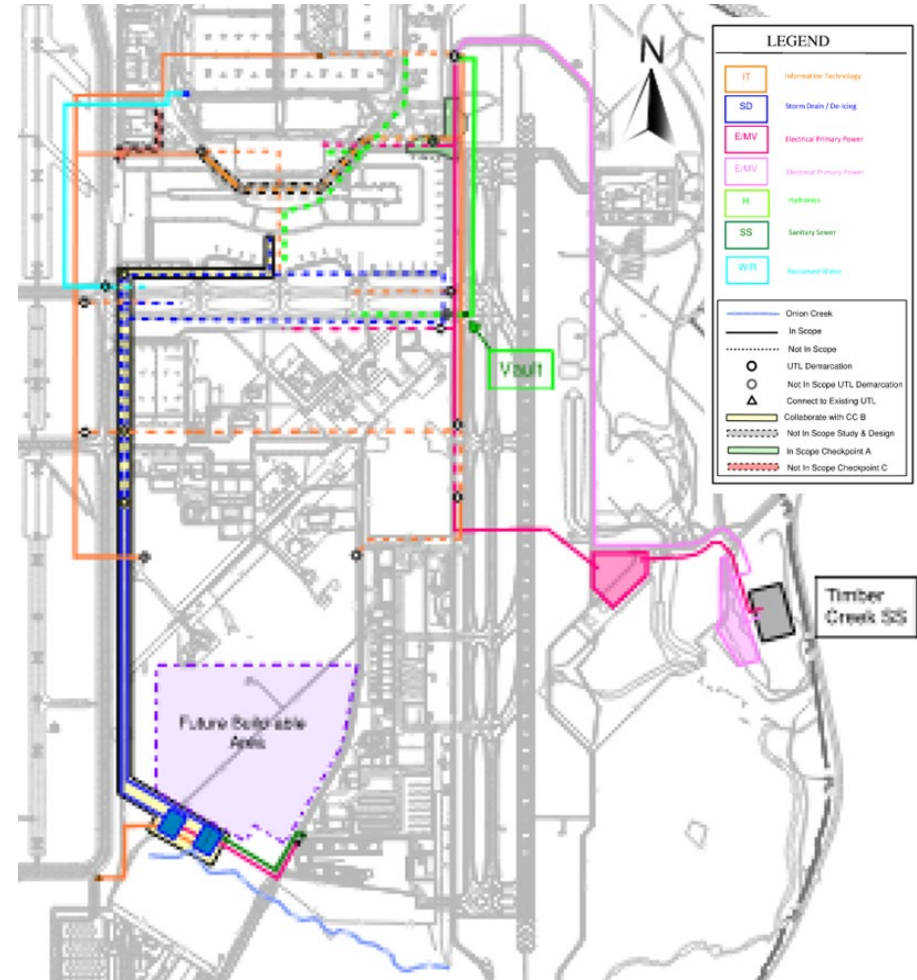
- **Project Updates**
 - Utility Infrastructure Campus-Wide
 - Central Utility Plant Relocation
 - Parking and Landside: West Garage
 - West Gate Expansion
 - Cargo Development East
 - Fuel Facility
 - West Infill and TSA Checkpoint 3 Expansion
 - Airfield Infrastructure – Midfield Taxiways
 - Concourse B and Tunnel
 - Arrivals and Departures Hall
- **Appendix**
 - Project Details
 - Project Descriptions

Project Updates

Utility Infrastructure Campus-Wide (UICW)

DESIGN

- **Latest Updates**
 - UICW Phase A design started on September 9, 2024
 - UICW construction manager at risk Council awarded to Sundt/Archer Western, a Joint Venture on July 18, 2024
 - Construction manager at risk pre-construction service Notice To Proceed in mid-January 2025
- **Anticipated Timeline**
 - **Design:** Q3 2024 – Q1 2026
 - **Preconstruction:** Q1 2025 – Q1 2026
 - **Build:** Q4 2025 – Q3 2027



Central Utility Plant Relocation

DESIGN

- **Latest Updates**
 - 12/20/24: First 30 days: Design Builder provided Design Criteria Manual evaluation with scope, cost and schedule recommendations for AUS approval
- **Anticipated Timeline**
 - **Procurement:** NTP for Preliminary & Schematic Design completed November 21, 2024
 - **Design:** Q4 2024 – Q4 2025
 - **Build:** Q4 2025 – Q2 2028



Current Central Utility Plant

Parking and Landside: West Garage Lot B

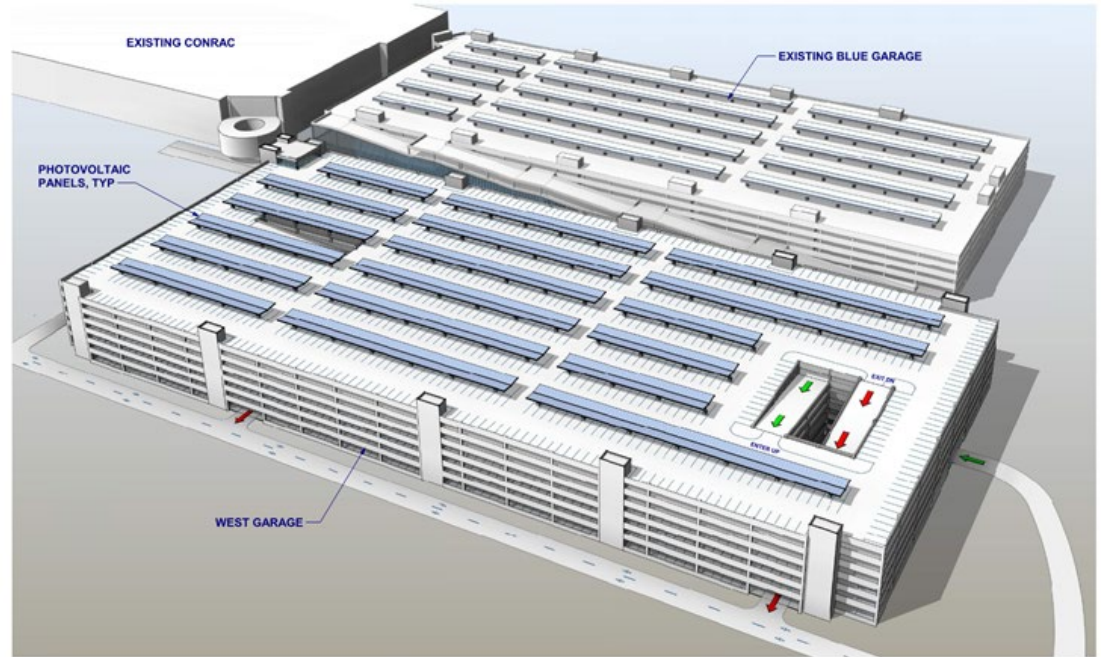
DESIGN

- **Latest Updates**

- Resubmitted Formal Site Development Permit (U1) and received comments from Austin Development Services Dept (DSD)
- 60% drawings reviewed by AUS and submitted to DSD Public Project Review Process for building permit mid design consultation
- Multiple sub-contractor outreach events held in November and December.

- **Anticipated Timeline**

- **Design:** Q3 2024 – Q3 2025
- **Build:** Q1 2025 – Q1 2028

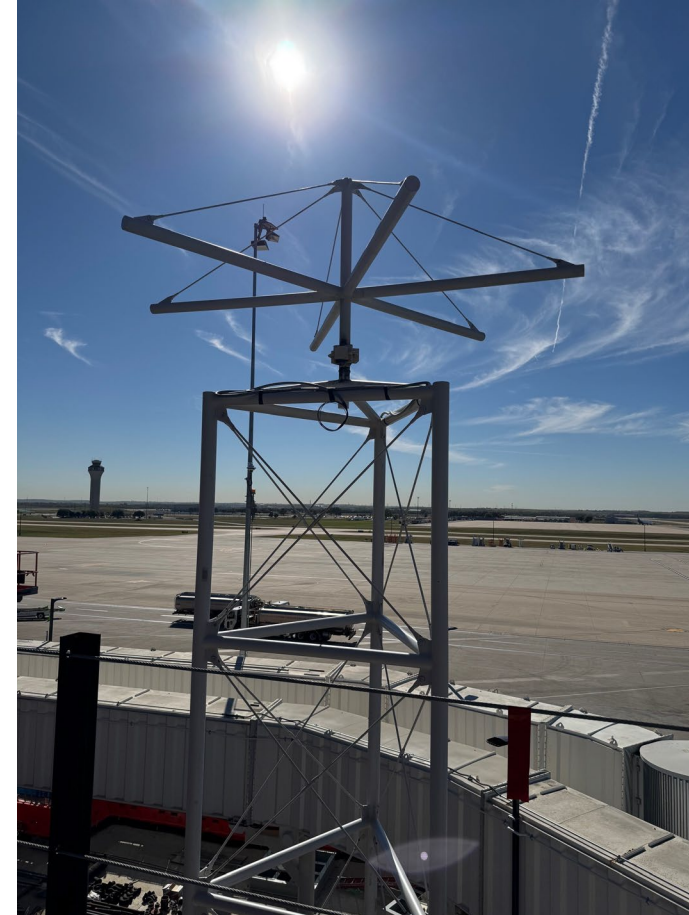


Conceptual rendering

West Gate Expansion

BUILD

- **Latest Updates**
 - Roof trusses delivered and assembled on the site
 - Structural steel for art wall installed
 - Concrete slab pours for mezzanine and rooftop mechanical space continue
 - Gate 30 passenger boarding bridge replacement in progress
 - Moon tower decor installed
- **Anticipated Timeline**
 - **Build:** Q2 2023 – Q1 2026



Moon tower steel final assembly prior to lift into the building.

Cargo Development East



- Latest Updates
 - Received Temporary Certificate of Occupancy (TCO)
 - Substantially Complete
- Anticipated Timeline
 - **Activate:** Q4 2024



Interior – New East Cargo Building

Fuel Facility

ACTIVATE

- **Latest Updates**
 - Waiting for AOA landscaping to be fully established. Contractor has until March 2025
 - The decorative screening fence has been delivered to the facility operator and engineering team for installation
- **Anticipated Timeline**
 - **Activate:** Q2 2025



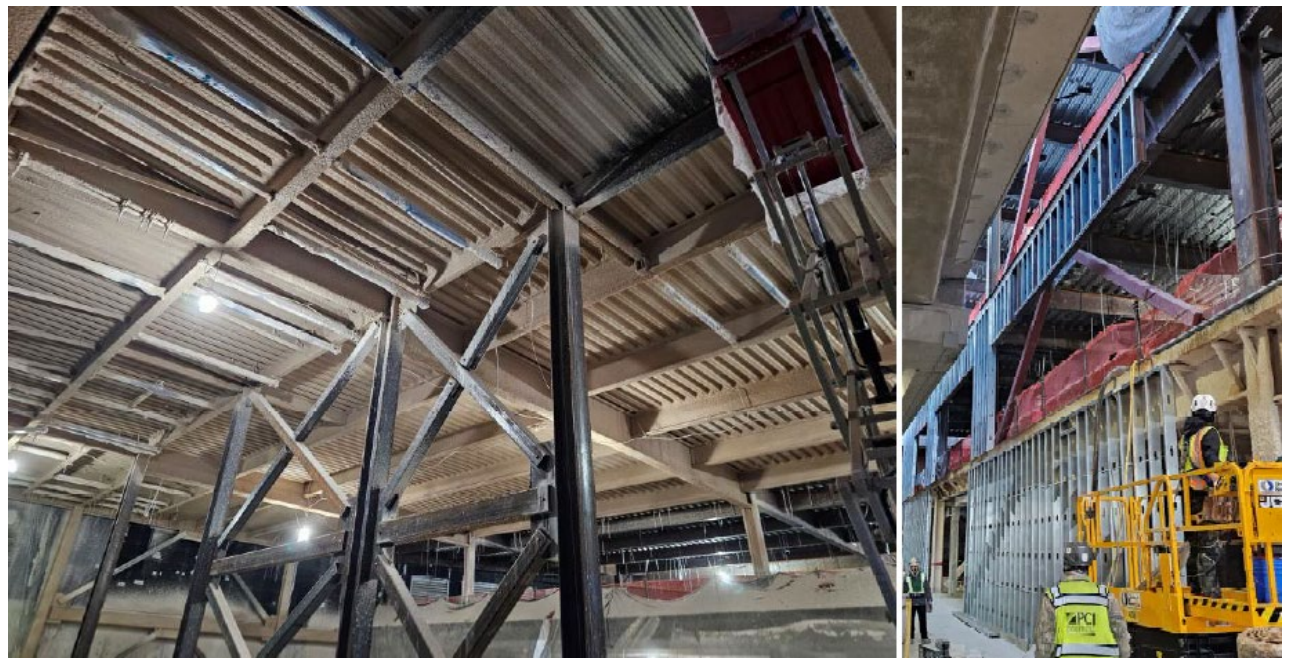
View of transfer pipeline – looking east

West Infill & TSA Checkpoint 3 Expansion



**As part of the Outbound Baggage Handling System project*

- **Latest Updates**
 - Concrete pours on metal decks are complete
 - Fireproofing of new steel continues
 - Hangars and supports for the mechanical and electrical continues
 - Interior framing continues
- **Anticipated Timeline**
 - **Build:** Q1 2024 – Q1 2026



Fireproofing and interior framing

Airfield Infrastructure: Midfield Taxiways



- **Latest Updates**
 - Austin Bridge & Road Work Package subcontractor contract execution ongoing
 - Construction submittals ongoing
 - Contractor setting up staging yard – placing trailers and utilities
- **Anticipated Timeline**
 - **Build:** Q4 2024 – Q2 2027

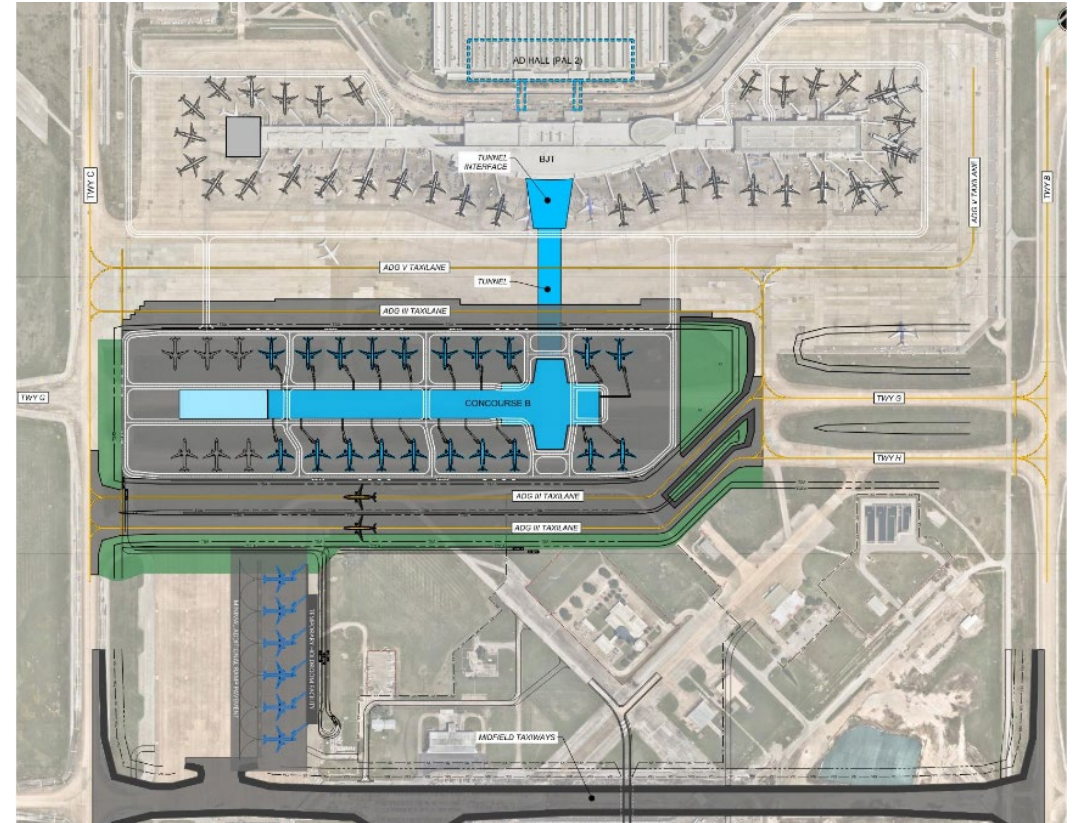


Contractor setting up staging yard

Concourse B and Tunnel



- **Latest Updates - Currently In Scope:**
 - New double loaded midfield concourse consisting of 20+ gates, passenger and tenant amenities and pedestrian, baggage handling system and utility tunnel cells
 - Apron civil work includes taxilane relocation, connection to existing taxiways and connecting underground utilities to the new utility corridor for permanent services
 - Finalizing Construction Manager at Risk contract for execution
- **Anticipated Timeline**
 - **Design:** 2024 – 2026
 - **Build:** 2026 – 2030



Conceptual diagram – Exact gate count to be determined with airlines

Arrivals and Departures Hall

DESIGN

- **Latest Updates - Currently In Scope:**
 - New check-in/ticketing hall and domestic baggage claim. Removal of Red Garage.
 - Work includes roadway/curbside relocation, passenger bridge connections to parking, connections and renovations to BJT, major infrastructure improvements as needed
 - Finalizing designer and CMR contracts for execution
- **Anticipated Timeline**
 - **Design:** 2024 – 2026
 - **Build:** 2026 – 2030



Pre-design conceptual rendering. Final design specifications and features subject to change as the project progresses.

Appendix

Project Details

Disadvantage Business Enterprise Goals and Delivery Methods

Midfield Taxiways

- Disadvantaged Business Enterprise Goals
 - Design: 17%
 - Pre-Construction: 9.14%
 - Construction: 7.45%
- Delivery Methods
 - Design: RS&H
 - Construction: Construction Manager At Risk: Austin Bridge & Road

Midfield Investigations & Vehicle Checkpoints

- Disadvantaged Business Enterprise Goals
 - Design: 73%
 - Construction: To Be Determined
- Delivery Methods
 - Design: Garver
 - Construction: DBB

Utility Infrastructure Campus-Wide

- Disadvantaged Business Enterprise Goals
 - Design: 5.75%
 - Construction: 6.32%
- Delivery Methods
 - Design: HDR Engineering, Inc.
 - Construction: Sundt/Archer Western

West Garage Lot B

- Disadvantaged Business Enterprise Goals
 - Design: 10.71%
 - Pre-Construction: 14.27%
- Delivery Methods
 - Design: PGAL, Inc.
 - Construction: Construction Manager At Risk: Austin Commercial, LP

Project Details

Disadvantage Business Enterprise Goals and Delivery Methods

West Gate Expansion

- Disadvantaged Business Enterprise Goals
 - Design: 17%
 - Construction: 11.12%
- Delivery Methods
 - Design: Page Architects (Rotation List)
 - Construction: Hensel Phelps

Cargo Development East

- Disadvantaged Business Enterprise Goals
 - Design: 15.8%
 - Construction: 1.13%
 - 7.36% anticipated
- Delivery Methods
 - Design: Atkins
 - Construction: JE Dunn and Flintco

Outbound Baggage Handling System & West Infill

- Disadvantaged Business Enterprise Goals
 - Construction & Design: 5.52%
 - 10% anticipated
- Delivery Methods
 - Design-Build
 - Whiting-Turner
 - Gensler, VTC BHS

Central Utility Plant

- Disadvantaged Business Enterprise Goals
 - Design: 18.9%
- Delivery Methods
 - Progressive Design-Build: JE Dunn/Jacobs

Project Details

Disadvantage Business Enterprise Goals and Delivery Methods

Concourse B and Tunnel

- Disadvantaged Business Enterprise Goals
 - Design: 8.85%
 - Pre-Construction and Construction: 9.40%
- Delivery Methods:
 - Design: Page / Fentress Joint Venture
 - Construction: Hensel Phelps

Arrivals and Departures Hall

- Disadvantaged Business Enterprise Goals
 - Design: 10.25%
 - Pre-Construction and Construction: 8.74%
- Delivery Methods
 - Design: Skidmore, Owings & Merrill LLP
 - Construction: Austin Commercial, LP

Project Descriptions

West Gate Expansion – 13184.014

- The main expansion project will add 3 new Gates (short term) to the west end of the Barbara Jordan Terminal (BJT) and replace 12 aging boarding gates. This project will provide infrastructure needed for passenger growth, comfort, health and safety.

Cargo Development East – 13189.026

- A 90,000 SF facility for operators/tenants with room to expand to 99,000 SF. Includes employee parking, truck staging, drainage infrastructure, 3 aircraft parking positions.

Outbound Baggage Handling System & West Infill – 5415.112

- Design build a new centralized baggage handling system (BHS) to increase screening capacity, address existing operational concerns, and upgrade to 30 Million Annual Passengers processed. Includes the West Infill and TSA Checkpoint 3 expansion projects, which will add over 75,000 square feet to the Barbara Jordan Terminal over 4 levels and allow for the expansion of Checkpoint 3 from 2 to up to 8 lanes.

Midfield Taxiways- 13188.003

- Design and construct two concrete parallel midfield taxiways with taxiway connectors and access to the existing maintenance ramp. The project includes constructing two taxiway bridges, utility relocation, drainage improvements, demolition of existing pavements and infrastructure, new airfield lighting and signage, new security fencing, a new reclaimed water bulk refilling station and modifications to roadways and parking lots.

Airline Fuel Facility (tenant project) – F7003.08

- The AUS Fuel Facility had reached a point where a significant renovation was necessary to support the current and future fuel delivery to aircrafts at Austin-Bergstrom International Airport (AUS). The project includes two bulk fuel storage tanks, three truck offloading systems, transfer/receipt pumping systems, fuel recovery and waste management systems, supporting facilities, two underground fuel transfer lines, upgrades to the existing Fuel Facility and a decorative fence.

Project Descriptions

West Garage – Lot B – 13308.002

- Planning, design and construction of a multi-level parking garage with an estimated capacity of 7,700 spaces. The designated location for this garage is the current Lot B surface parking area (approx. 326,000 sf), situated directly north of the existing Blue Garage. This project creates additional parking to replace parking and revenue lost due to construction and to meet future demand connected with enplanement growth forecasts associated with the addition of Concourse B.

Central Utility Plant – 13307.002

- Design, construct and commission a new, appropriately sized CUP and associated Thermal Energy Storage (TES) utilizing current efficiency technology, equipment, and operational processes to provide reliable, redundant and resilient service for the existing and future AUS cooling and heating loads.

Concourse B and Tunnel – 13185.001

- New Concourse B with at least 20 gates and a tunnel to the Barbara Jordan Terminal and all required apron space. Work includes addition of an interface connector at the Barbara Jordan Terminal to provide required seamless path for passengers to enter the tunnel and space for the baggage handling system and utilities.

Midfield Investigations and Vehicle Checkpoints – 6000.121

- This project will expand guard-shacks at two vehicle Checkpoints, Alpha and Charlie, to allow efficient and secure access to the Aircraft Operations Area. The Midfield survey scope has been completed.

Utility Infrastructure Campus-Wide – 13307.001

- Design and construct utility systems including reclaimed water, storm drainage, water quality pond/deicing pond, detention pond, hydronic piping (chilled and hot water), AUS medium voltage electrical power distribution center, ductbank, and electrical distribution system, redundant electrical duct banks (as an option), information technology/telecommunications duct banks, and other utility extensions that may be identified as the Journey With AUS program progress and their seamless coordination with other Journey With AUS facilities projects.

Arrivals and Departures Hall – 13182.001

- New Arrivals and Departures Hall for all ticketing and domestic baggage claim. Work includes the removal of the Red Garage, relocation/expansion of curbside roadway and installation of all utility infrastructure as needed. Removal of existing ticketing in the existing Barbara Jordan Terminal is also included.

Thank You!

**JOURNEY
WITHAUS**