

CapMetro

**Joint Sustainability Committee
Meeting
CapMetro Updates**

March 26th, 2025

Antonio Martin

CapMetro Project Updates

- Overview

- Battery Electric Buses (BEB)
 - 104 BEB's
- Charging Infrastructure
 - 9315 – 16 legacy chargers Completed 01/15/2023
 - 2910 – 48 dispensers Completed 11/15/2024
 - 9315 – 30 Chargers w/ 90 pantographs
 - 9315 – 4.35 mW solar array
 - Metro Rapid
 - PV 4 pantograph Chargers
 - Expo 4 pantograph Chargers

- Future Technology

Battery Electric Buses

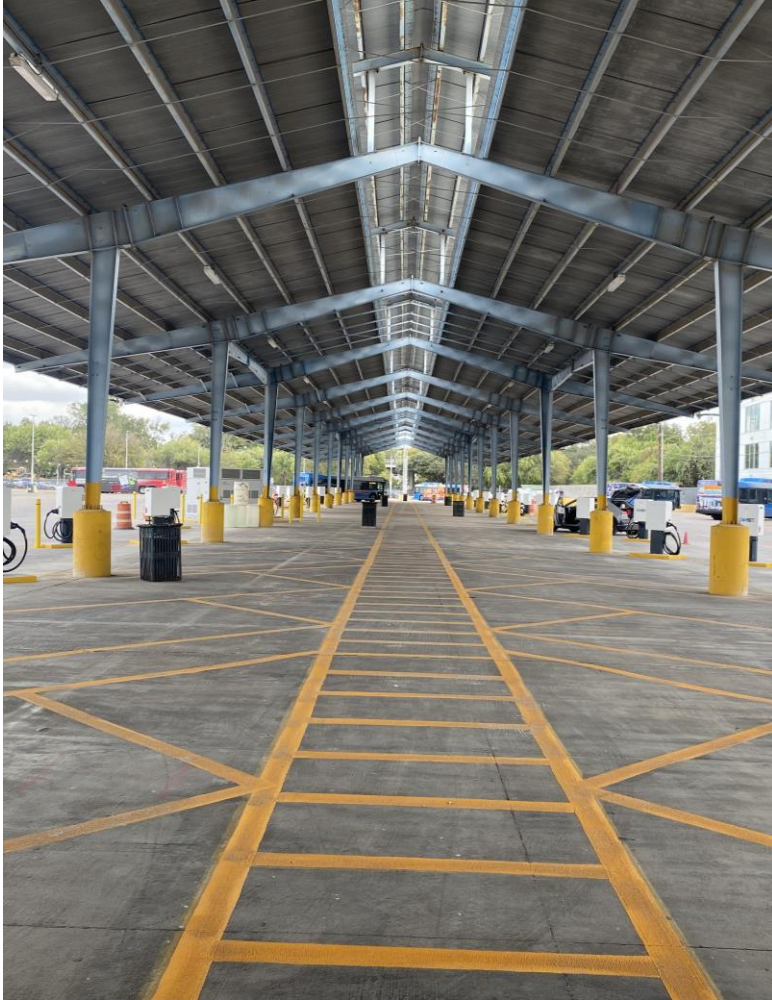
52 New New Flyer Buses



40 New Proterra Buses



BEB Charging at 2910 E. 5th Street



- ❖ Two Transformers 1500kVA
- ❖ 2 chargers (1.44MW each)
 - ❖ 48 plug in dispenser
- ❖ Completed November 2024



BEB Charging Station Project – NOPS

Project Overview



- ❖ Solar Canopy (267,000 sqft)
 - ❖ 4.1MW/ AC 2812kW
 - ❖ 6960 QCELL 585W modules
- ❖ Three Transformers 1500kVA
- ❖ 30 chargers (1.44MW each)
 - ❖ 90 Pantographs Schunk SLS_301
- ❖ Training Charger (mast)
 - ❖ 1 pantograph Schunk SLS_201
- ❖ Construction Schedule:
 - Dec 2024 – **Jan 2026**

Charging / Solar Array / Microgrid Project at NOPS

CONTRACTOR: **HOLT RENEWABLES**



Metro Rapid EXPO Line

METRORAPID: EXPO LINE

EXPO CENTER TO REPUBLIC SQUARE

» THE PROJECT

In November 2020, voters in Austin passed Project Connect, a truly comprehensive transit expansion plan designed to connect more neighborhoods to everything the Austin area has to offer. Besides providing our community with more ways to get around the city, Project Connect will help create thousands of good local jobs and give more of us access to healthcare, education, employment, essential services, and creating and maintaining more affordable places to live.

An important part of the connectivity of Project Connect is the four new MetroRapid lines that provide the Austin community with more ways to get around the city as well as connect to additional transit options. Plans for MetroRapid include a zero-emission fleet, newly designed stations, and an improved customer experience.

The Expo Line is a 12-mile route with 44 stations designed to provide a one-seat ride between the Travis County Exposition Center and downtown. The northeast end of the route will be a Park & Ride at the Expo Center with 150 parking spaces. It will connect customers to multiple other destinations, including medical, educational, residential, commercial areas and downtown at Republic Square. The route broadens access to opportunities along the route, which includes key educational and employment centers. The Expo Line also includes future connections to Orange, Blue, Red and Green rail lines, giving customers even more transit options to move throughout the city.

The Expo Line will be in service in 2025.



METRORAPID: EXPO LINE

EXPO CENTER TO REPUBLIC SQUARE

» A ZERO-EMISSION FLEET

There's a shared passion for the environment in our community, and the Project Connect plan includes transitioning Capital Metro's fleet to zero-emission vehicles. In 2021, Capital Metro placed the largest order ever for a fleet of electric buses. The new electric vehicles come with state-of-the-art technology, engineering and customer amenities, including USB charging ports, plug-in and overhead charging, open seating floor plan and digital displays to provide customers with clear and timely communications.



Conceptual artist rendering

Metro Rapid Pleasant Valley Line

METRORAPID: PLEASANT VALLEY LINE

BERKMAN/MUELLER TO
GOODNIGHT RANCH

» THE PROJECT

In November 2020, voters in Austin passed Project Connect, a truly comprehensive transit expansion plan designed to connect more neighborhoods to everything the Austin area has to offer. Besides providing our community with more ways to get around the city, Project Connect will help create thousands of good local jobs, and give more of us access to healthcare, education, employment, essential services, and creating and maintaining more affordable places to live.

An important part of the connectivity of Project Connect is the four new MetroRapid lines that provide the Austin community with more ways to get around the city as well as connect to additional transit options. Plans for MetroRapid include a zero-emission fleet, newly designed stations and an improved customer experience.

The Pleasant Valley line is a 15-mile route with 43 planned stations designed to provide service to neighborhoods between Mueller and the Goodnight Ranch on Slaughter Lane. This route will provide service from northeast to southeast Austin, provide access to growth areas for new development and redevelopment, and establish more frequent, high-quality transit service east of I-35. It will connect customers to multiple other destinations including Mueller, the Springdale Shopping Center, ACC Eastview, Austin Lighthouse for the Blind, Dove Springs, Easton Park and Goodnight Ranch. The Pleasant Valley line will include connections to the future rail network, with transfers to the Blue and Green lines on the route.

The Pleasant Valley line will be in service in 2025.



METRORAPID: PLEASANT VALLEY LINE

BERKMAN/MUELLER TO
GOODNIGHT RANCH

» A ZERO-EMISSION FLEET

There's a shared passion for the environment in our community, and the Project Connect plan includes transitioning Capital Metro's fleet to zero-emission vehicles. In 2021, Capital Metro placed the largest order ever for a fleet of electric buses. The new electric vehicles come with state-of-the-art technology, engineering and customer amenities, including USB charging ports, plug-in and overhead charging, open seating floor plan and digital displays to provide customers with clear and timely communications.

» STATION AMENITIES

MetroRapid stations along the Pleasant Valley Line will have cameras for enhanced security, improved lighting, and real-time arrival and wayfinding signage. All stations will be fully accessible for all customers, providing multimodal connections with access for pedestrians and cyclists and people of all abilities.



Conceptual artist rendering

Future Technology of Choice

- Hybrids

- 6 mpg vs 4 mpg diesel
- Lower emissions
- Green zone operation (limited range zero emission)



- Hydrogen fuel cell

- Zero emission - H₂O as exhaust
- Cost of fuel prohibitive (Delay pilot until 2030)



CapMetro

Thank you.