

Journey With AUS - Airport Expansion & Development Program

Active Projects Update

Airport Advisory Commission
August 2025

Lyn Estabrook

Deputy Chief – Planning & Development

**JOURNEY
WITHAUS**

Table of Contents

- **Project Updates**
 - West Infill and TSA Checkpoint 3 Expansion
 - West Gate Expansion
 - Parking and Landside: Yellow Garage
 - Atrium Infill
 - Airfield Infrastructure – Midfield Taxiways
 - Utility Infrastructure Campus-Wide
 - Central Utility Plant Relocation
 - Concourse B and Tunnel
 - Arrivals and Departures Hall
- **Appendix**
 - Project Prime Firms & RCAs
 - Project Details
 - Project Descriptions

Program Overview

Journey With AUS projects are developed through a five-phase process:

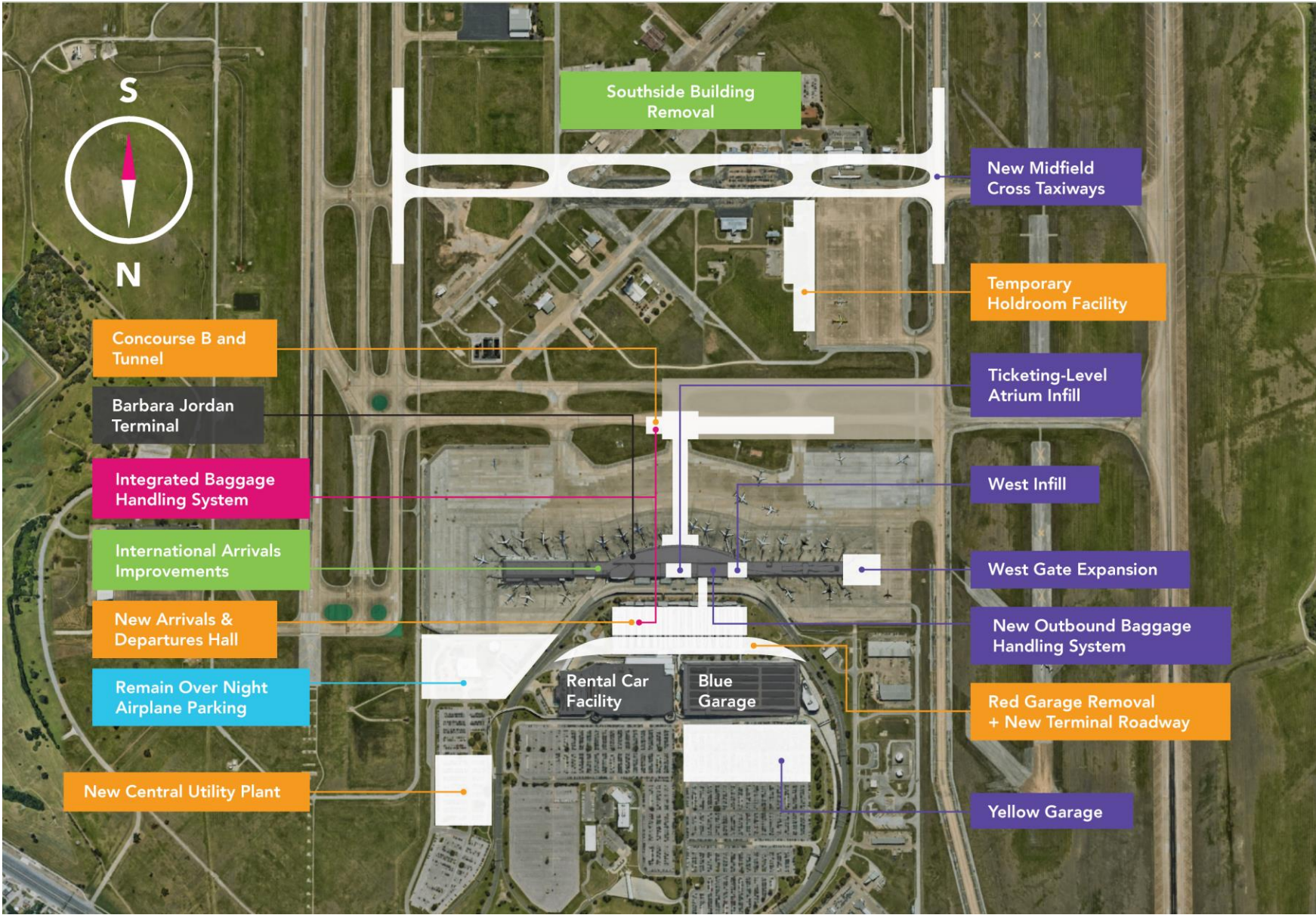
ENVISION

PROCUREMENT

DESIGN

BUILD

ACTIVATE



West Infill & TSA Checkpoint 3 Expansion

**As part of the Outbound Baggage Handling System project*

BUILD

Latest Updates

- Interior finishes continue
- Mechanical and electrical system testing continue
- New EDS machines are in place and conveyors are being electrically connected

Anticipated Timeline

- **Build:** Q1 2024 – Q1 2026

Design-Build: Gensler/Whiting Turner



West Gate Expansion

BUILD

Latest Updates

- Exterior panels, flashing, and air barrier continue
- Major CHWS/R piping and pumps installed in the pump room
- Ductwork, plumbing, electrical, and insulation continue on all 3 levels
- Mason is almost complete in the tug tunnel and apron restrooms
- The installation and testing were completed on the 8" water tie-in
- Gate 22 is back in service

Anticipated Timeline

- **Build:** Q2 2023 – Q1 2026



Photo of the West Gate project under construction.

Designer: Page

Construction: Hensel Phelps

Airfield Infrastructure: Midfield Taxiways and Maintenance Ramp Expansion

BUILD

Latest Updates

- Construction of new roadways and parking lots are ongoing
- Construction of waterline, power, communication and storm utilities ongoing
- Utility removals and site cleanup are ongoing
- Reviewing GMP Proposal for Maintenance Ramp Expansion
- Held Contractor Outreach Event

Anticipated Timeline

- **Build:** Q4 2024 – Q2 2027

Designer: RS&H

Construction: Austin Bridge & Road



Parking and Landside: Yellow Garage

Latest Updates

- Completed drilling 317 of 428 piers
- Completed 3 deck pours
- 100% roadway drawings reviewed with comments

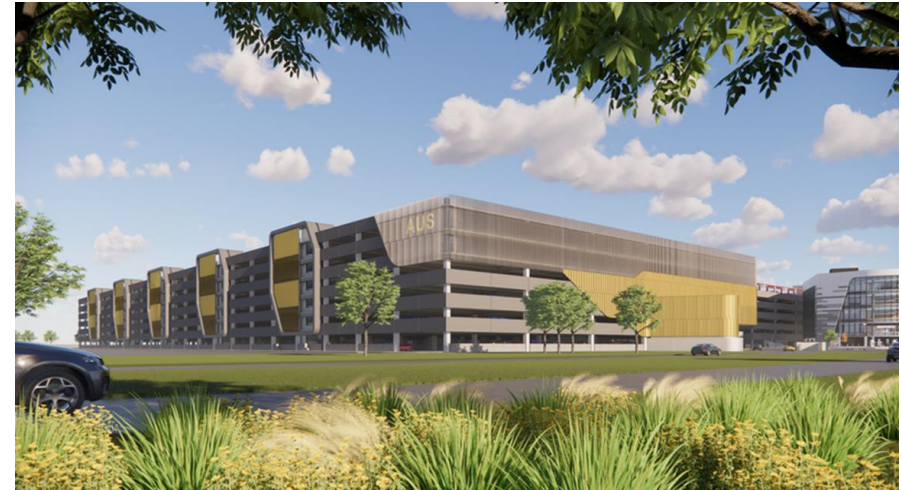
Anticipated Timeline

- **Design:** Q3 2024 – Q3 2025
- **Build:** Q1 2025 – Q1 2028

Designer: PGAL

Construction: Austin Commercial

BUILD



Design rendering; final design specifications and features subject to change as the project progresses.



Construction photo showing project progress as of July 14, 2025.

Atrium Infill

BUILD

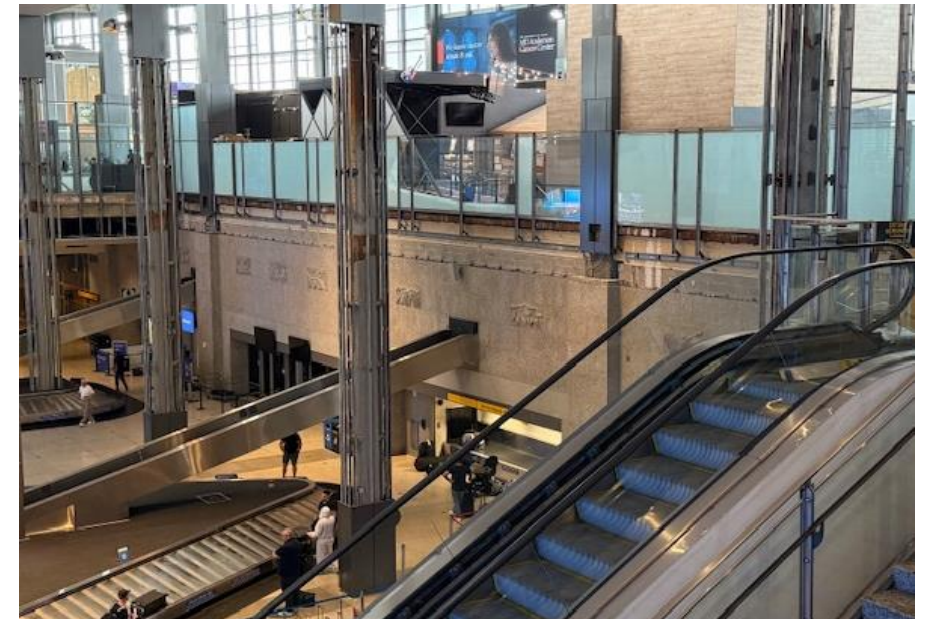
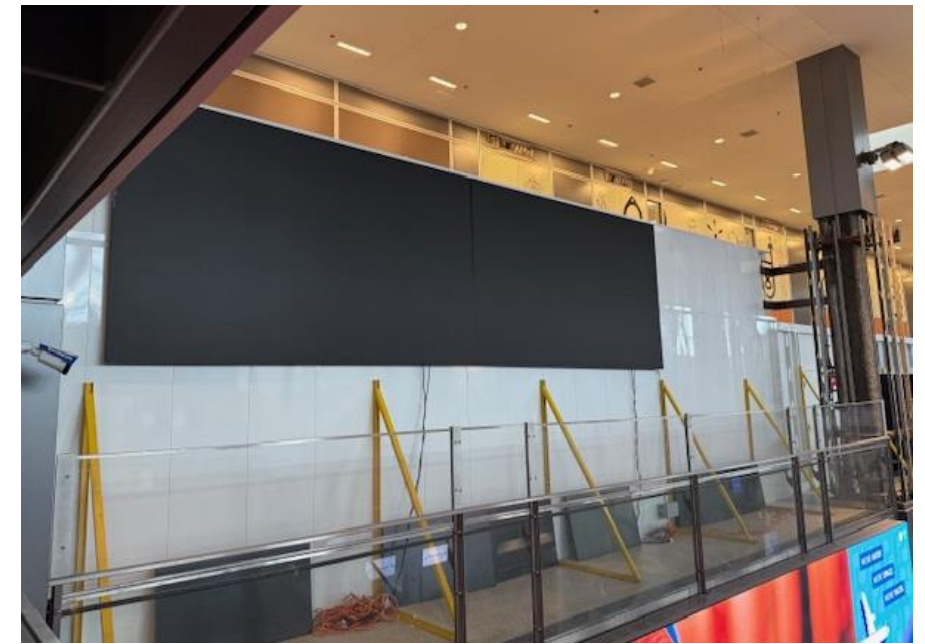
Latest Updates

- Demolition continues
- Clear Channel temporary monitors installed
- Steel erection scheduled to start in August
- Coordination with Art in Public Places continues

Anticipated Timeline

- **Design:** Q2 2024 – Q2 2025
- **Build:** Q2 2025 – Q3 2026

Designer: Corgan
Construction: Whiting-Turner



Utility Infrastructure Campus-Wide (UICW)

DESIGN

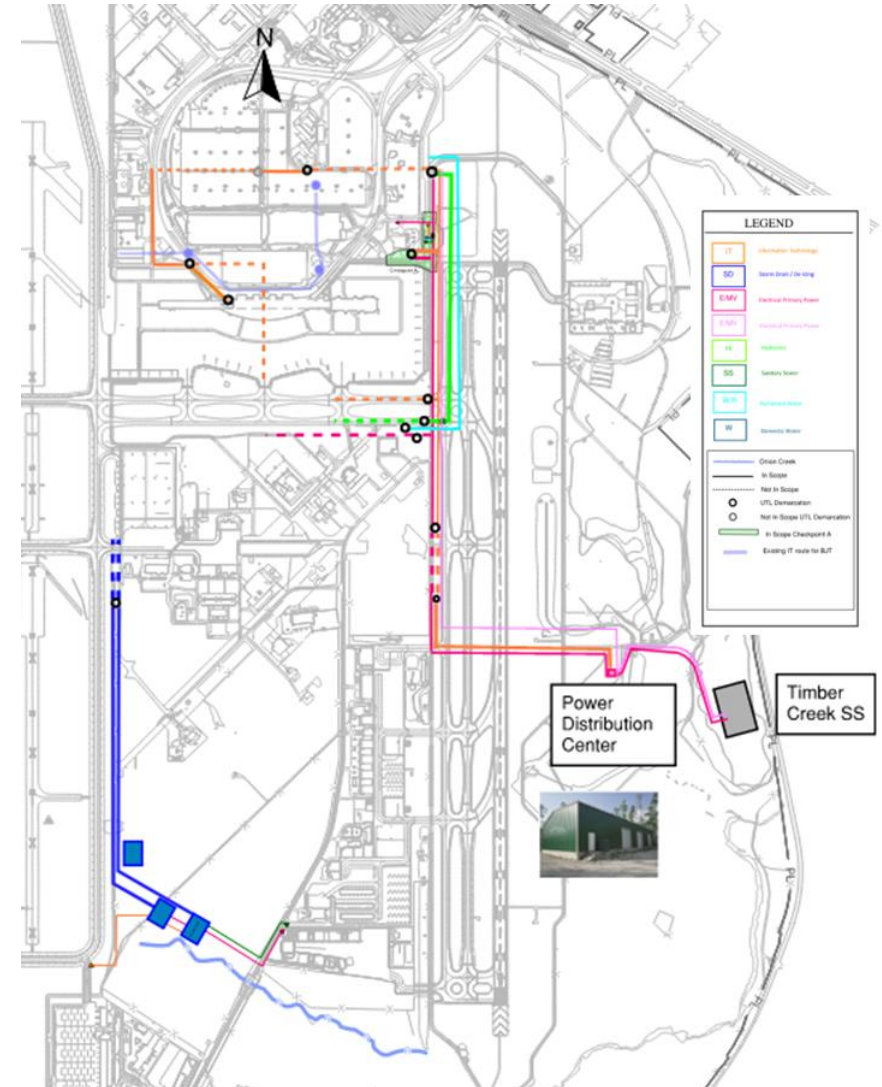
Latest Updates

- UICW 30% OPCC reconciliation and value engineering work sessions will take place in July 2025
- UICW 60% detailed design is due mid-September 2025

Anticipated Timeline

- **Design:** Q3 2024 – Q1 2026
- **Preconstruction:** Q1 2025 – Q1 2026
- **Build:** Q4 2025 – Q4 2027

Designer: HDR
Construction: Sundt/Archer Western



Central Utility Plant Relocation

DESIGN

Latest Updates

- 30% Site Design: June 25, 2025- Review Complete
- 30% Building Design: July 22, 2025- In review
- Design Phase Services proposal in review
- Reclaimed Water Main Extension proposal in review

Anticipated Timeline

- **Design:** Q4 2024 – Q1 2026
- **Build:** Q2 2026 – Q2 2028

Design-Build: JE Dunn/Jacobs



Current Central Utility Plant

Concourse B and Tunnel

DESIGN

Latest Updates - Currently In Scope:

- New double loaded midfield concourse consisting of 20+ gates, passenger and tenant amenities and pedestrian moving sidewalks, baggage handling system and utility tunnel cells
- Apron civil work includes taxiway relocation, connection to existing taxiways and connecting underground utilities to the new utility corridor for permanent services
- Phase A Design Services/Geotechnical investigations nearing completion
- Phase B Design Services being negotiated

Anticipated Timeline

- **Design:** 2024 – 2026
- **Build:** 2026 – 2030

Designer: Page/Fentress

Construction: Hensel Phelps



Conceptual rendering – Exact gate count to be determined with airlines

Arrivals and Departures Hall

DESIGN

Latest Updates - Currently In Scope:

- New check-in/ticketing hall and domestic baggage claim
- Removal of Red Garage
- Work includes roadway/curbside relocation, passenger bridge connections to parking, connections to BJT and major infrastructure improvements as needed
- Phase A Design Services ongoing

Anticipated Timeline

- **Design:** 2025 – 2026
- **Build:** 2026 – 2030

Designer: SOM

Construction: Austin Commercial



Pre-design conceptual rendering. Final design specifications and features subject to change as the project progresses.

Appendix

Journey with AUS Prime Designers and Contractors

Project	Contract Type	Company
West Infill & TSA Checkpoint 3 Expansion	Design-Build	Gensler/Whiting-Turner
West Gate Expansion	Design	Page
	CMAR	Hensel Phelps
Atrium Infill	Design	Corgan
	CMAR	Whiting Turner
Midfield Taxiways	Design	RS&H
	CMAR	Austin Bridge & Road
Yellow Parking Garage	Design	PGAL
	CMAR	Austin Commercial
Central Utility Plant	Design-Build	JE Dunn/Jacobs
Utility Infrastructure Campus-Wide	Design	HDR
	CMAR	Sundt/Archer Western
Concourse B & Tunnel	Design	Page/Fentress
	CMAR	Hensel-Phelps
Arrival & Departure Hall	Design	SOM
	CMAR	Austin Commercial

Project Details

Disadvantage Business Enterprise Goals and Delivery Methods

Outbound Baggage Handling System & West Infill

- Disadvantaged Business Enterprise Goals
 - Construction & Design: 5.52%
 - 10% anticipated
- Delivery Methods
 - Design-Build
 - Whiting-Turner
 - Gensler, VTC BHS

West Gate Expansion

- Disadvantaged Business Enterprise Goals
 - Design: 17%
 - Construction: 11.12%
- Delivery Methods
 - Design: Page Architects (Rotation List)
 - Construction: Hensel Phelps

Midfield Taxiways

- Disadvantaged Business Enterprise Goals
 - Design: 17%
 - Pre-Construction: 9.14%
 - Construction: 7.45%
- Delivery Methods
 - Design: RS&H
 - Construction: Construction Manager At Risk: Austin Bridge & Road

West Garage Lot B

- Disadvantaged Business Enterprise Goals
 - Design: 10.71%
 - Pre-Construction: 14.27%
- Delivery Methods
 - Design: PGAL, Inc.
 - Construction: Construction Manager At Risk: Austin Commercial, LP

Project Details

Disadvantage Business Enterprise Goals and Delivery Methods

Atrium Infill

- Disadvantaged Business Enterprise Goals
 - Design:
 - Construction: 10.4%
- Delivery Methods
 - Design: Corgan
 - Construction: Whiting Turner

Utility Infrastructure Campus-Wide

- Disadvantaged Business Enterprise Goals
 - Design: 5.75%
 - Construction: 6.32%
- Delivery Methods
 - Design: HDR Engineering, Inc.
 - Construction: Sundt/Archer Western

Central Utility Plant

- Disadvantaged Business Enterprise Goals
 - Design: 18.9%

- Delivery Methods
 - Progressive Design-Build: JE Dunn/Jacobs

Concourse B and Tunnel

- Disadvantaged Business Enterprise Goals
 - Design: 8.85%
 - Pre-Construction and Construction: 9.40%
- Delivery Methods:
 - Design: Page / Fentress Joint Venture
 - Construction: Hensel Phelps

Arrivals and Departures Hall

- Disadvantaged Business Enterprise Goals
 - Design: 10.25%
 - Pre-Construction and Construction: 8.74%
- Delivery Methods
 - Design: Skidmore, Owings & Merrill LLP
 - Construction: Austin Commercial, LP

Project Descriptions

Outbound Baggage Handling System & West Infill – 5415.112

- Design build a new centralized baggage handling system (BHS) to increase screening capacity, address existing operational concerns, and upgrade to 30 Million Annual Passengers processed. Includes the West Infill and TSA Checkpoint 3 expansion projects, which will add over 75,000 square feet to the Barbara Jordan Terminal over 4 levels and allow for the expansion of Checkpoint 3 from 2 to up to 8 lanes.

West Gate Expansion – 13184.014

- The main expansion project will add 3 new Gates (short term) to the west end of the Barbara Jordan Terminal (BJT) and replace 12 aging boarding gates. This project will provide infrastructure needed for passenger growth, comfort, health and safety.

Midfield Taxiways- 13188.003

- Design and construct two concrete parallel midfield taxiways with taxiway connectors and access to the existing maintenance ramp. The project includes constructing two taxiway bridges, utility relocation, drainage improvements, demolition of existing pavements and infrastructure, new airfield lighting and signage, new security fencing, a new reclaimed water bulk refiling station and modifications to roadways and parking lots.

West Garage – Lot B – 13308.002

- Planning, design and construction of a multi-level parking garage with an estimated capacity of 7,700 spaces. The designated location for this garage is the current Lot B surface parking area (approx. 326,000 sf), situated directly north of the existing Blue Garage. This project creates additional parking to replace parking and revenue lost due to construction and to meet future demand connected with enplanement growth forecasts associated with the addition of Concourse B.

Project Descriptions

Atrium Infill – 13309.002

- Project will add more square feet to the terminal for security screening, bag check and passenger processing by filling in existing open space above baggage claim. The project will add approximately 12,000 square feet of concourse level floor plate to the Barbara Jordan Terminal. The elevated slab will be constructed while the existing vertical circulation is kept in place. The project will also upgrade the mechanical, electrical and plumbing systems as needed. The suspended slab will likely require enhancements to the existing structural capacity.

Utility Infrastructure Campus-Wide – 13307.001

- Design and construct utility systems including reclaimed water, storm drainage, water quality pond/deicing pond, detention pond, hydronic piping (chilled and hot water), AUS medium voltage electrical power distribution center, ductbank, and electrical distribution system, redundant electrical duct banks (as an option), information technology/telecommunications duct banks, and other utility extensions that may be identified as the Journey With AUS program progress and their seamless coordination with other Journey With AUS facilities projects.

Central Utility Plant – 13307.002

- Design, construct and commission a new, appropriately sized CUP and associated Thermal Energy Storage (TES) utilizing current efficiency technology, equipment, and operational processes to provide reliable, redundant and resilient service for the existing and future AUS cooling and heating loads.

Concourse B and Tunnel – 13185.001

- New Concourse B with at least 20 gates and a tunnel to the Barbara Jordan Terminal and all required apron space. Work includes addition of an interface connector at the Barbara Jordan Terminal to provide required seamless path for passengers to enter the tunnel and space for the baggage handling system and utilities.

Arrivals and Departures Hall – 13182.001

- New Arrivals and Departures Hall for all ticketing and domestic baggage claim. Work includes the removal of the Red Garage, relocation/expansion of curbside roadway and installation of all utility infrastructure as needed. Removal of existing ticketing in the existing Barbara Jordan Terminal is also included.

Thank You!

**JOURNEY
WITHAUS**