



# EAST AUSTIN PARKING UPDATE

## Community Development Commission



TRANSPORTATION  
PUBLIC WORKS

# AGENDA

- Background
- Curb Management Solutions
- Community Engagement
- Feedback / Adjustments to Plan
- Phase 1 Parking Changes (limited rollout)
- Timeline
- Future Steps



# BACKGROUND - PTMD

- PTMD = Parking & Transportation Management District.
- East Austin PTMD established in 2015.
- 51% of parking revenue for district mobility improvements.



TRANSPORTATION  
PUBLIC WORKS

# BACKGROUND – PARKING CHALLENGE



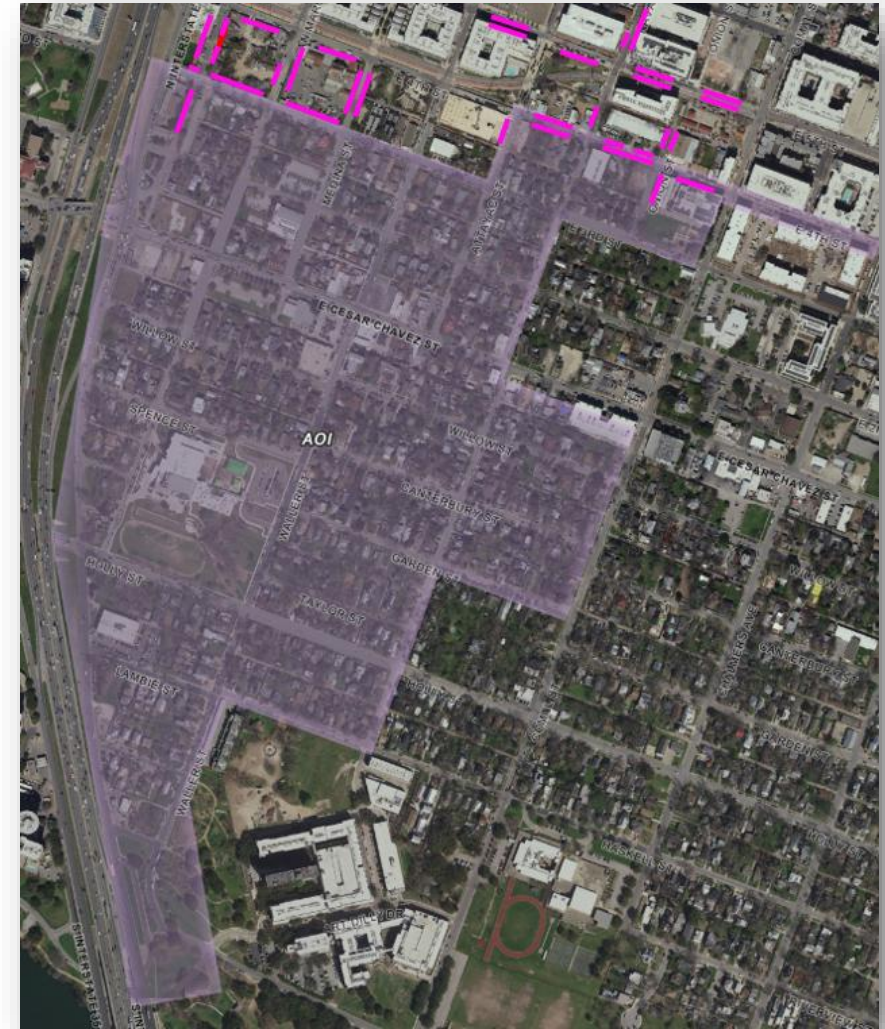
TRANSPORTATION  
PUBLIC WORKS

## Parking Challenge

- Pressure from downtown and East 6<sup>th</sup> St. have led to more residents asking to restrict parking on their blocks.
- Drivers continue to park farther east, leading to more parking restrictions, block-by-block.

## Proposed Solution

- TPW created a comprehensive plan to address challenges for residents, businesses, and needs of workers/visitors to the area.



# CURB MANAGEMENT SOLUTIONS



TRANSPORTATION  
PUBLIC WORKS

## **Paid Parking (Metered and/or Mobile)**

- Paid Parking is a tool to encourage turnover and increase availability for short-term parking needs.

## **Hybrid RPP Parking**

- Piloted in South Congress area, allows public parking during the day with meters/signage, with resident-only parking generally in the evenings. RPP-permitted vehicles are allowed to park at all times in Hybrid zones.

## **Residential Permit Parking (RPP)**

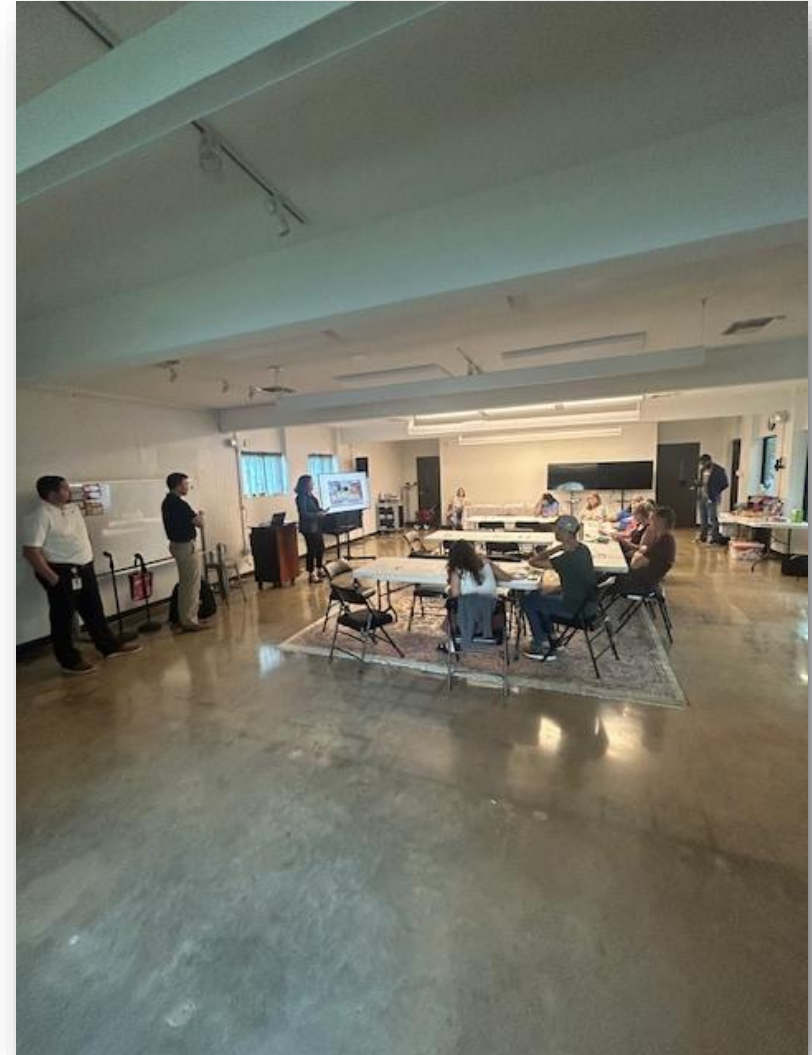
- RPP allows residential areas to restrict parking to local residents and their guests during peak parking hours.

# COMMUNITY ENGAGEMENT



TRANSPORTATION  
PUBLIC WORKS

- **Dec 2024** – Community meeting at Sanchez Elementary School
- **Feb 2025** – Presentation and discussion with East Cesar Chavez Contact Team
- **April 2025** – Distributed flyers to homes in potential expansion zone for online survey & meeting date
- **April 2025** – Presentation and discussion with community at Christ Church



# FEEDBACK / ADJUSTMENTS



TRANSPORTATION  
PUBLIC WORKS

## What We Heard

- Residents like existing RPP
- Residents need help near Saltillo/Scoot Inn/Cosmic and I-35 crossings
- Sanchez Elementary Parents Need Options

## Updates Based on Feedback

- Add Pay-to-Park and Hybrid near Saltillo/Scoot Inn/Cosmic and ECC & 35
- Add Hybrid on 1200 Holly St
- Limit expansion to observe changes and introduce neighborhood to Hybrid
- Work with Sanchez Elementary to offer parking assistance to parents



# Current Parking Regulations



RPP

P2P

2 HOUR

RPP = Residential Permit Parking  
P2P = Pay to Park



TRANSPORTATION  
PUBLIC WORKS

# Current + Proposed Phase 1 Parking Regulations



RPP

New P2P

P2P

Hybrid RPP

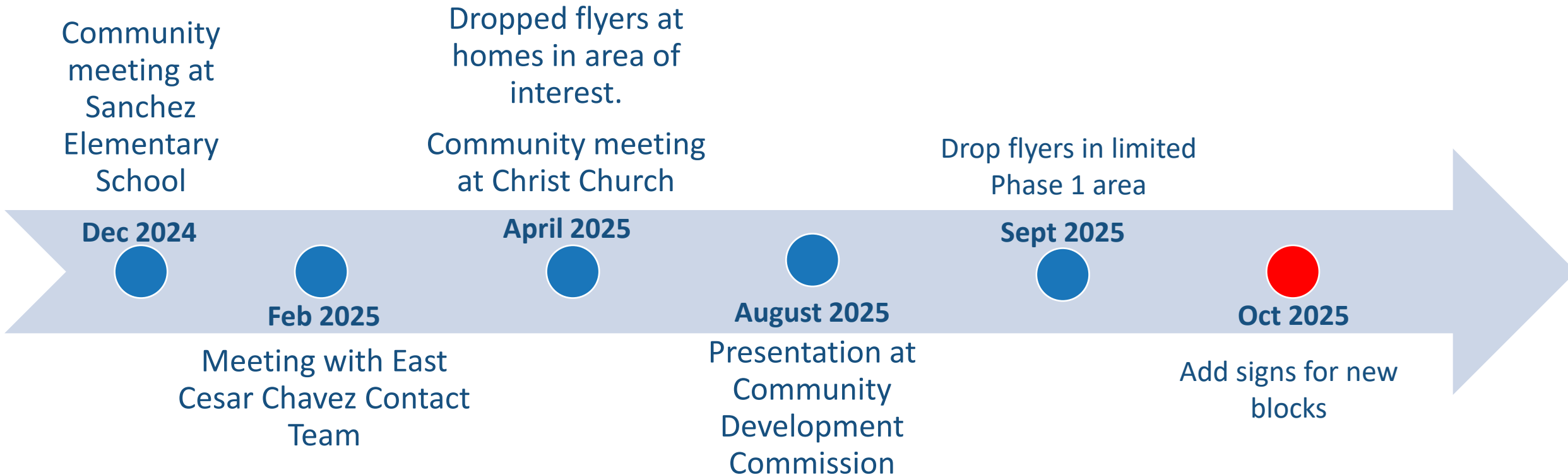
2 HOUR

RPP = Residential Permit Parking  
P2P = Pay to Park

# TIMELINE



TRANSPORTATION  
PUBLIC WORKS



# FUTURE STEPS



- Open Terrazas Branch Library parking
  - 45 paid public parking spaces
  - 10 Terrazas Library parking only spaces
  - APP – at night only?
- Evaluate and study Phase 1 changes
- Resident-led expansion of Hybrid RPP
- Work with Sanchez Elementary School to assist parents
- Identify blocks that can support retail paid parking



---

# TRANSPORTATION PUBLIC WORKS

## Questions & Discussion

