

Austin Parks and Recreation

Palm Park Shelter House Historic Zoning

September 2025
C14-2025-0072
C14H-2025-0077

Paul Books, Planner Principal



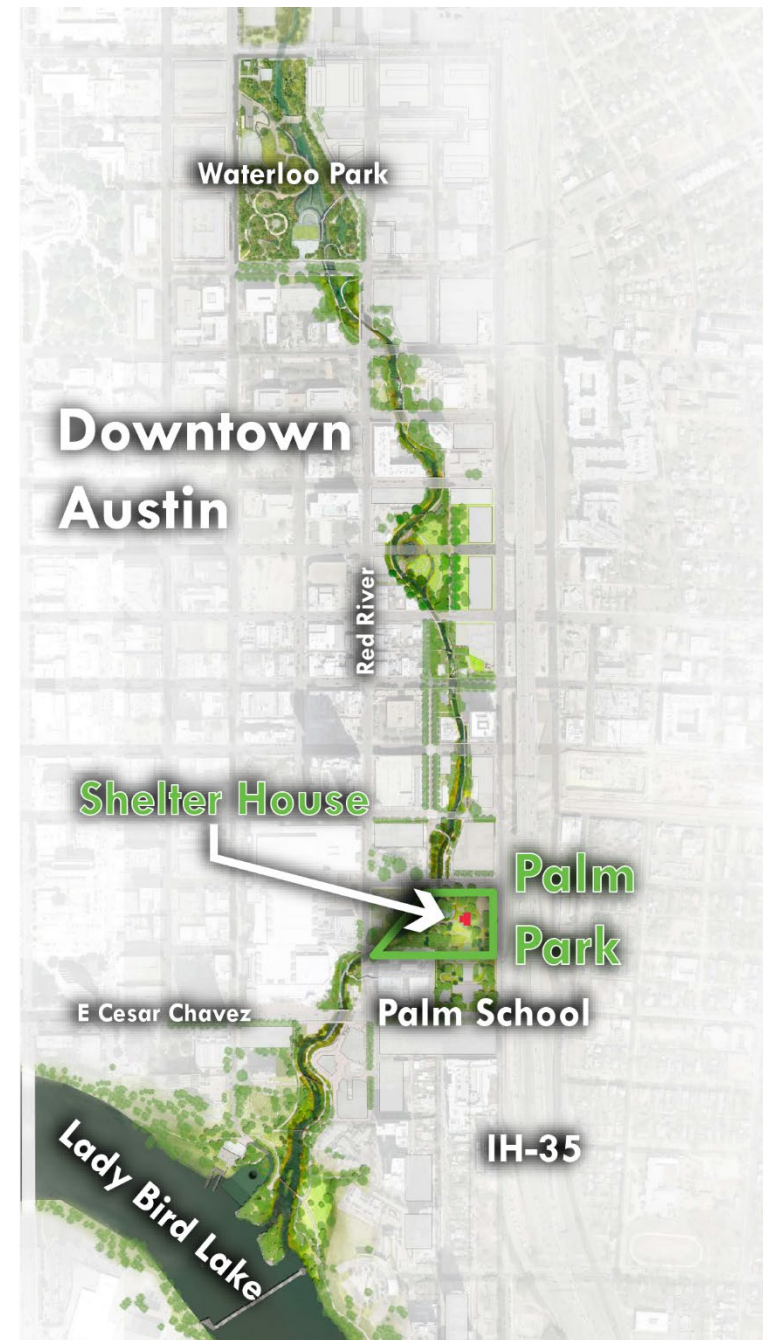
Overview

- Background
- Base Zoning
- Historic Zoning
- Request for Action



Background

- Sir Swante Palm Neighborhood Park
 - ~ 3 acres
 - City Council District 9
 - Along Waller Creek in Downtown Austin
 - Adjacent to the historic Palm School
 - Currently Unzoned



Background

1933

The first iteration of Palm Park opens adjacent to Palm School.

1935

Construction complete of the park features; including play-ground, pool, and shelter house.

1940

Palm Park and Palm School play important role in Waller Creek community.

1975

The City of Austin launches Waller Creek Development Plan. Palm School closes in 1976.

2010

The Waller Creek Conservancy is established.

2013

The Conservancy and the City of Austin finalize Joint Development Agreement (JDA) to establish roles and responsibilities.

2014

Aquatic Facilities Needs Assessment determines Palm Pool will be closed indefinitely.

2016

Waterloo Greenway launches community engagement and schematic design process for Palm Park.

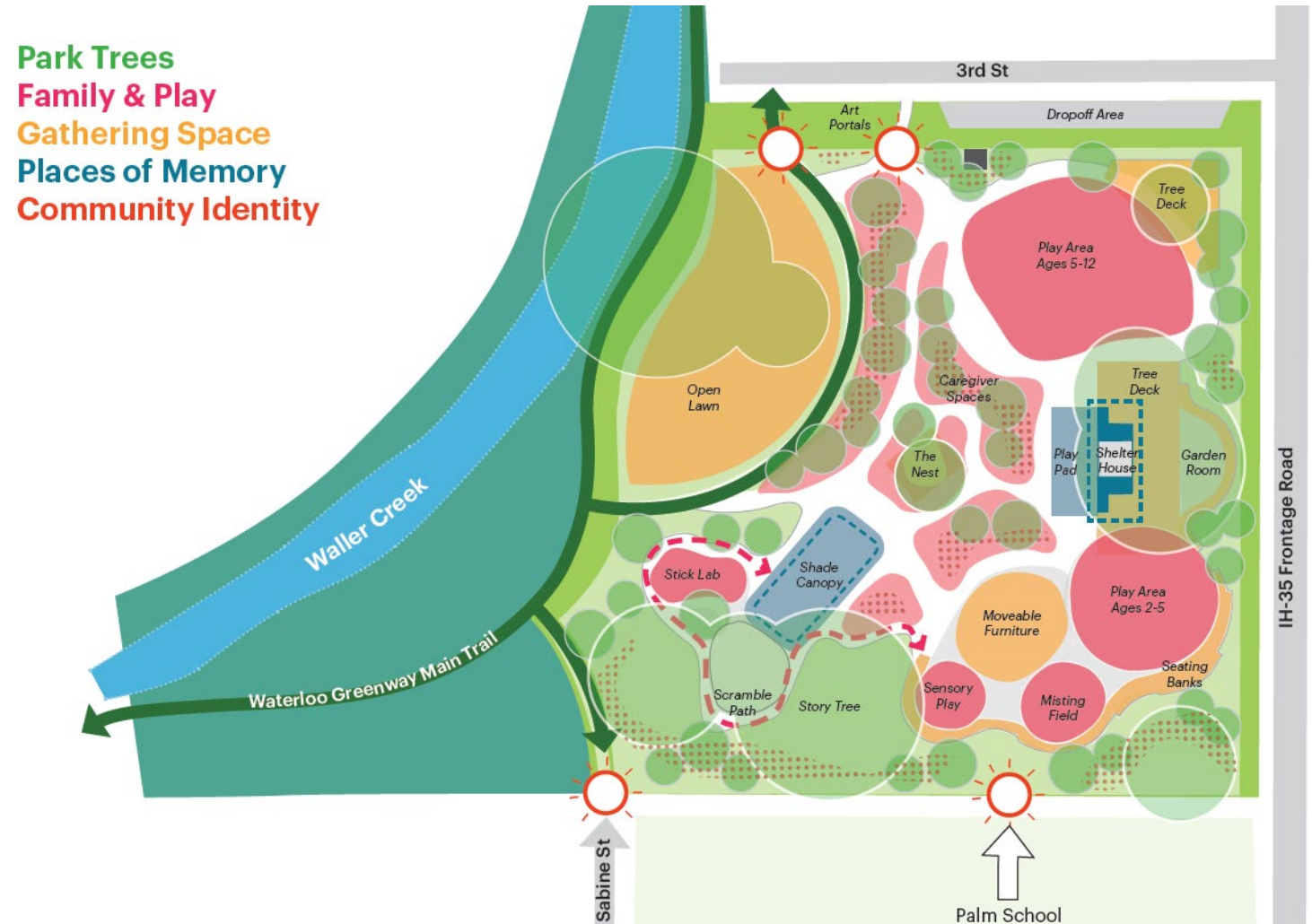
Background

- Palm Park is part of the Waterloo Greenway connecting Lady Bird Lake to Waterloo Park through a greenway trail and activated park spaces
- Waterloo Greenway intends to revitalize the Shelter House as part of the redevelopment of Palm Park



Background

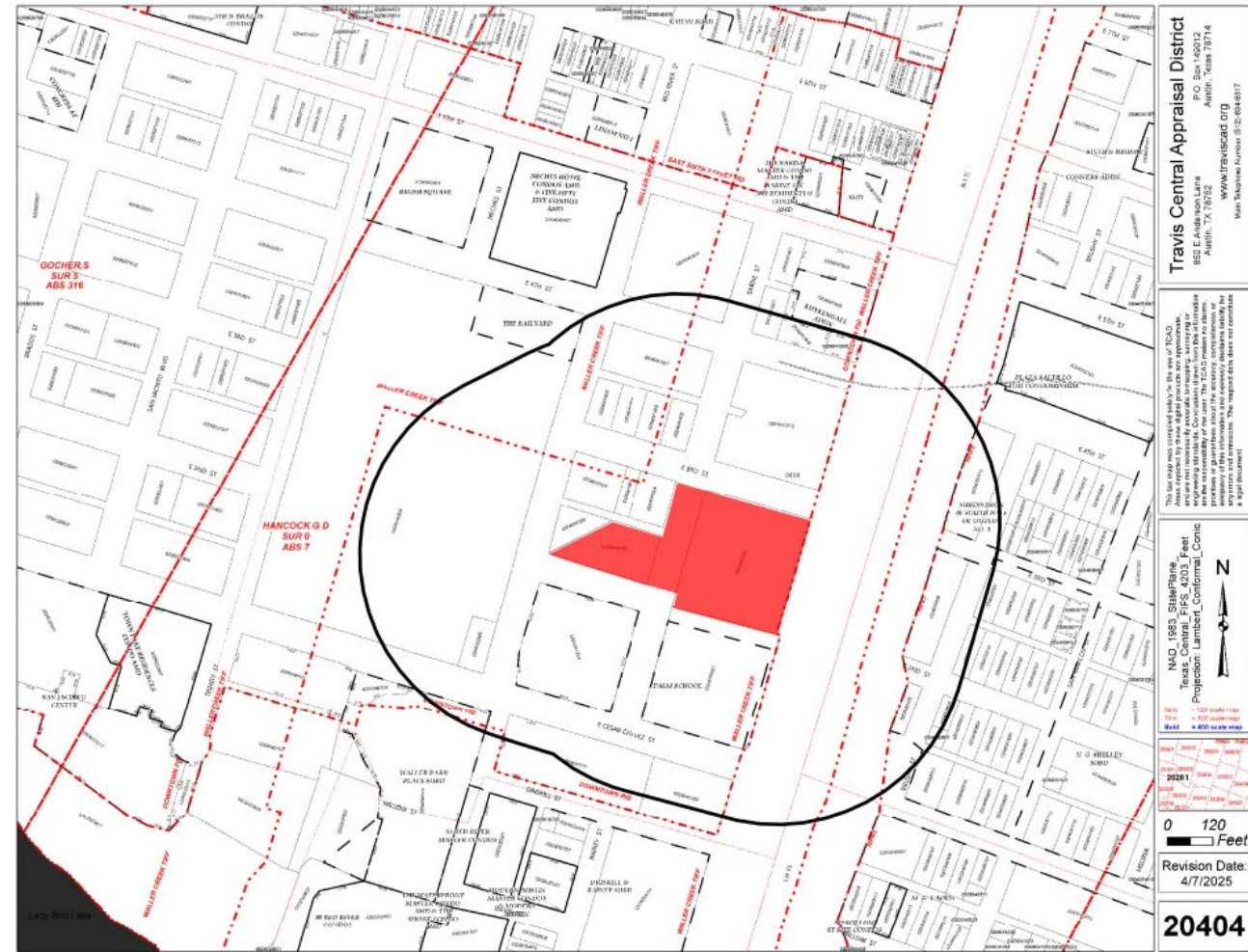
- Revitalized Shelter House becomes center of activity within the Park
- Stone construction is stable allowing for adaptive re-use of the structure for park programming





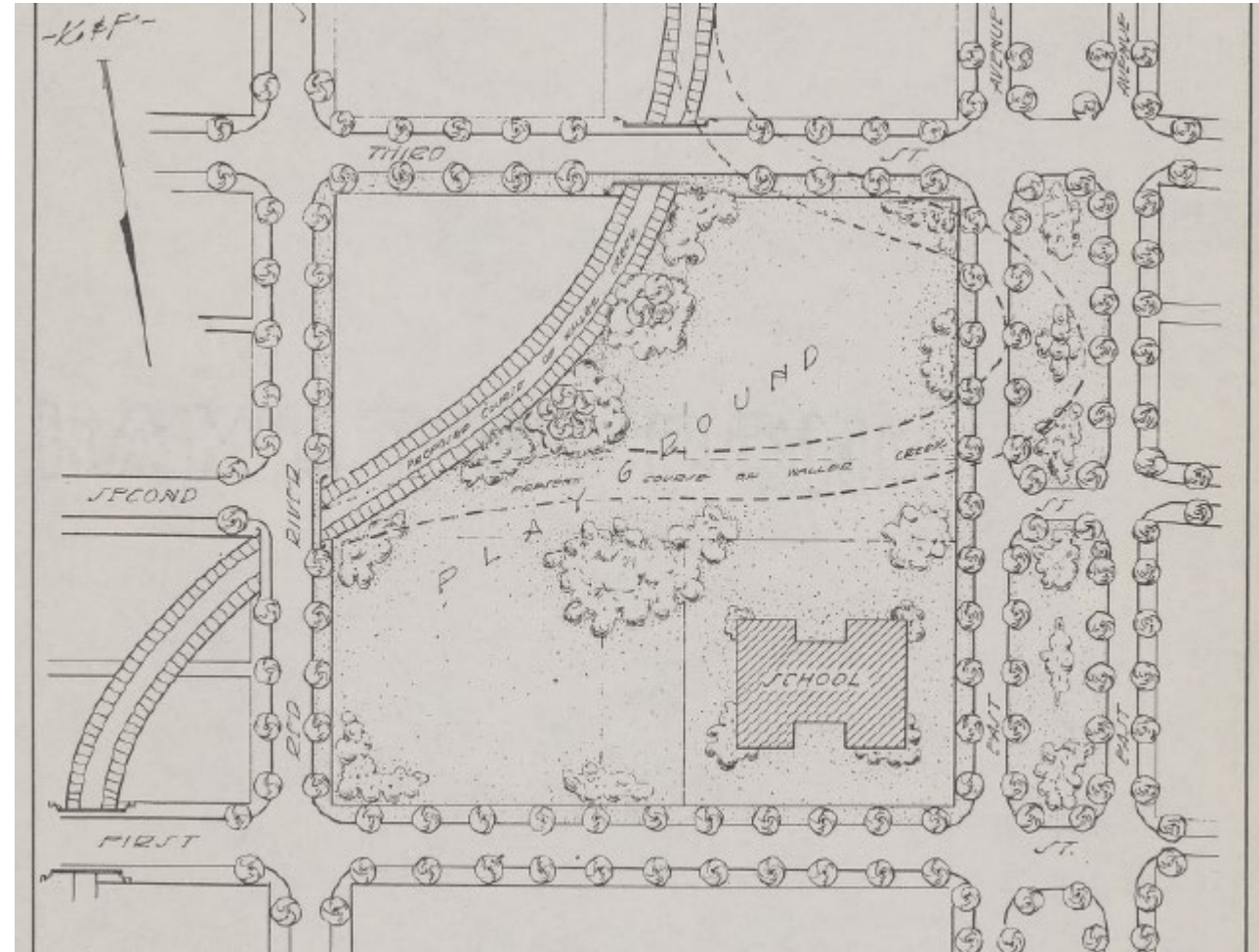
Base Zoning

- Currently Unzoned and CBD zoning but actively used as a City of Austin Park
- Past, current and proposed uses meet purpose and intent of "P" district
 - According to City of Austin Guide to Zoning: P is the designation for a governmental, civic, public service, or public institution use.



Historic Zoning

- Requesting historic zoning for the footprint of the Shelter House
- Community Value
 - Strong association with Austin's Mexican American community, nearby East Austin neighborhoods, and Lower Waller Creek District
- Architecture
 - Embodies styles of the national movement pertaining to parks and park programming in the early twentieth century
 - Designed by noted local architect Hugo Kuehne representing an important era of growth and investment in Austin Parks



Request for Action

- Recommend approval of Public Zoning for all of Palm Park and Historic Zoning for the footprint of the Palm Park Shelter House



Thank You

