

Journey With AUS - Airport Expansion & Development Program

Active Projects Update

Airport Advisory Commission
September 2025

Lyn Estabrook

Deputy Chief – Planning & Development

**JOURNEY
WITHAUS**

Table of Contents

- **Project Updates**

- West Infill and TSA Checkpoint 3 Expansion
- West Gate Expansion
- Parking and Landside: Yellow Garage
- Atrium Infill
- Airfield Infrastructure – Midfield Taxiways
- Utility Infrastructure Campus-Wide
- Central Utility Plant Relocation
- Concourse B and Tunnel
- Arrivals and Departures Hall

- **Appendix**

- Project Prime Firms & RCAs
- Project Details
- Project Descriptions

Program Overview

Journey With AUS projects are developed through a five-phase process:

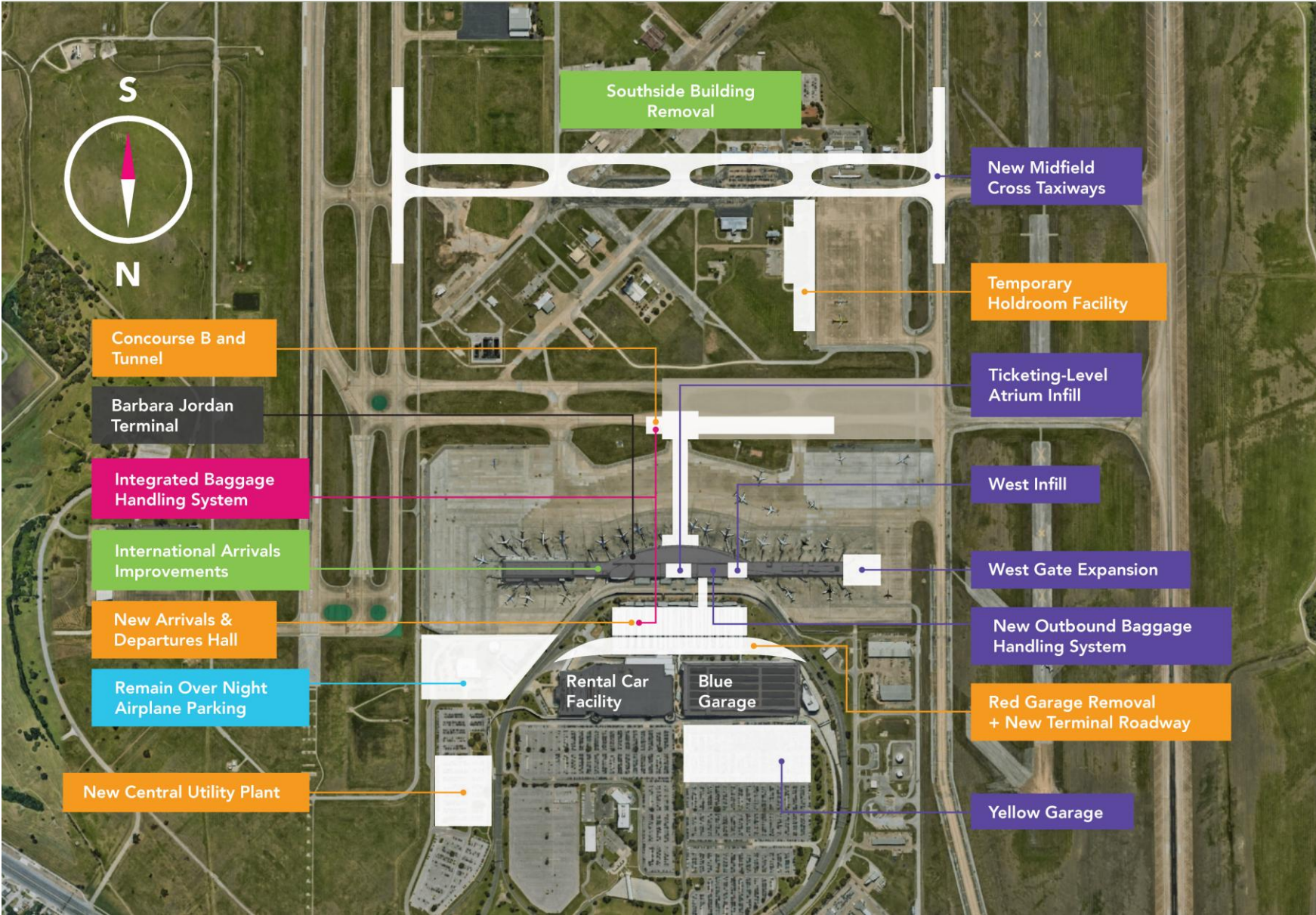
ENVISION

PROCUREMENT

DESIGN

BUILD

ACTIVATE



West Infill & TSA Checkpoint 3 Expansion

BUILD

**As part of the Outbound Baggage Handling System project*

Latest Updates

- Interior finishes continue
- Mechanical and electrical system testing nearing completion
- New BHS System is undergoing internal testing in preparation for TSA Integrated Site Acceptance Test
- Exterior metal panels making good progress

Anticipated Timeline

- **Build:** Q1 2024 – Q1 2026

Design-Build: Gensler/Whiting Turner



West Gate Expansion



Latest Updates

- Exterior panels, flashing, and air barrier near completion
- Power conversion to temp power, component installation and then back to permanent power completed
- Temporary Gate 33 to be removed September 2
- Terrazzo flooring started at the concourse level
- Drywall installation at concourse level is underway

Anticipated Timeline

- **Build:** Q2 2023 – Q1 2026

Designer: Page

Construction: Hensel Phelps



Photo of the West Gate project under construction.

Airfield Infrastructure: Midfield Taxiways and Maintenance Ramp Expansion



Latest Updates

- Construction of new roadways and parking lots are ongoing
- Construction of waterline, power, communication and storm utilities ongoing
- AUS reviewing GMP Proposal for Maintenance Ramp Expansion
- Completed 100% Design of Maintenance Ramp Expansion

Anticipated Timeline

- **Build:** Q4 2024 – Q2 2027

Designer: RS&H

Construction: Austin Bridge & Road



Parking and Landside: Yellow Garage

Latest Updates

- Completed 85% of drilled pier foundations
- Completed 10% of concrete decks, including partial completion of zone 1 & 2 level 4 concrete deck

Anticipated Timeline

- **Design:** Q3 2024 – Q3 2025
- **Build:** Q1 2025 – Q1 2028

Designer: PGAL

Construction: Austin Commercial

BUILD



Design rendering; final design specifications and features subject to change as the project progresses.



Construction photo showing project progress as of Aug 27, 2025.

Atrium Infill



Latest Updates

- Clear Channel temporary monitors installed
- Steel erection started and making good progress
- Coordination with Art in Public Places continues

Anticipated Timeline

- **Design:** Q2 2024 – Q2 2025
- **Build:** Q2 2025 – Q3 2026



Designer: Corgan
Construction: Whiting-Turner

Utility Infrastructure Campus-Wide (UICW)

DESIGN

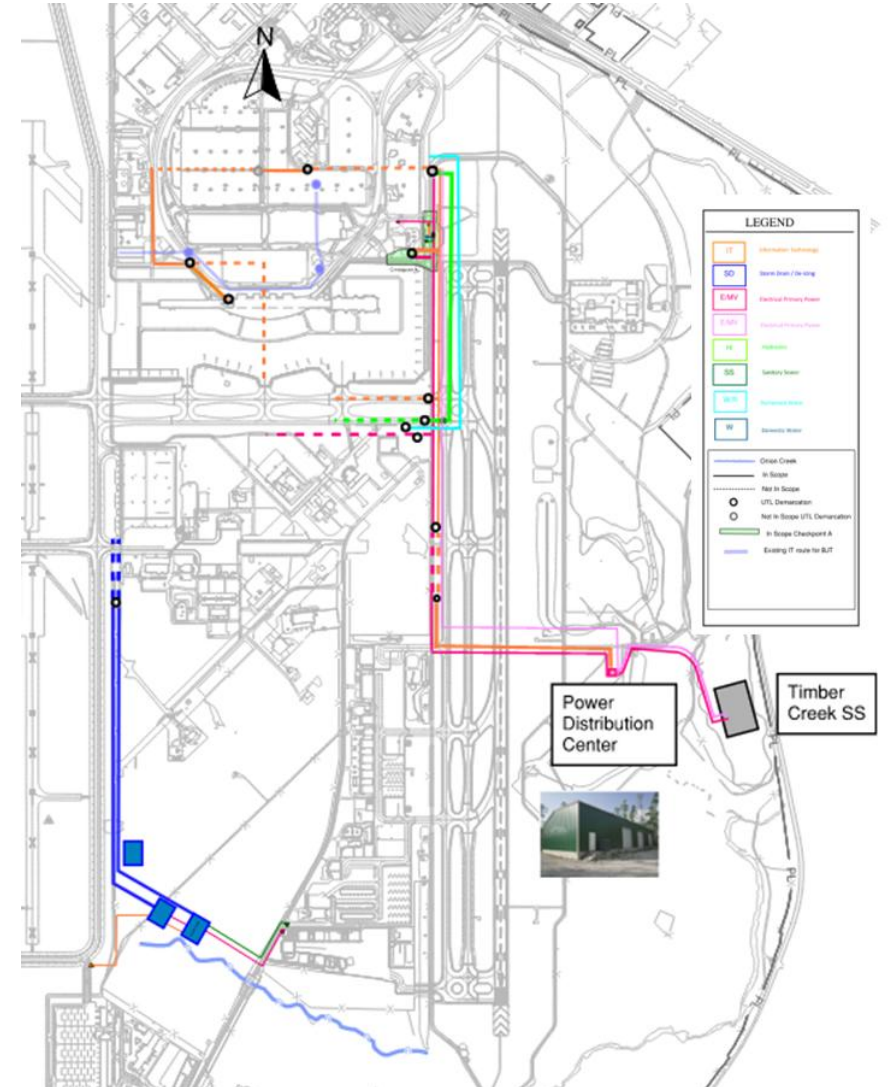
Latest Updates

- UICW 30% Opinion of Probable Construction Cost reconciliation and value engineering work sessions took place in July 2025
- Value Engineering Workshops to take place between August and early September 2025
- UICW 60% detailed design is due mid-September 2025

Anticipated Timeline

- **Design:** Q3 2024 – Q1 2026
- **Preconstruction:** Q1 2025 – Q1 2026
- **Build:** Q4 2025 – Q4 2027

Designer: HDR
Construction: Sundt/Archer Western



Central Utility Plant Relocation

DESIGN

Latest Updates

- 30% site design: June 25, 2025- review complete
- Schematic Design Phase (30%) CUP building design review ended on 8/1/25, awaiting contractor response to AUS review comments
- Review of Design Development Phase + Construction Documents Phase (Amendment 1) design proposal ended 8/5/25, awaiting contractor response to AUS review comments
- Schematic Design Phase (30%) cost estimate review session ended on 8/14/25. Awaiting contractor re-submission reflecting AUS review comments

Anticipated Timeline

- **Design:** Q4 2024 – Q1 2026

Design-Build: JE Dunn/Jacobs



Draft of New Central Utility Plant

Concourse B and Tunnel

DESIGN

Latest Updates - Currently In Scope:

- Phase A Design Services, Geotechnical & Survey investigations have been completed
- Phase B Design Services contract was executed Aug. 2025. Schematic design process currently underway

Anticipated Timeline

- **Design:** 2024 – 2026
- **Build:** 2026 – 2030

Designer: Page/Fentress
Construction: Hensel Phelps



Conceptual rendering – Exact gate count to be determined with airlines

Arrivals and Departures Hall

DESIGN

Latest Updates - Currently In Scope:

- New check-in/ticketing hall and domestic baggage claim
- Removal of Red Garage
- Work includes roadway/curbside relocation, passenger bridge connections to parking, connections to BJT and major infrastructure improvements as needed
- Phase A Design Services ongoing

Anticipated Timeline

- **Design:** 2025 – 2026
- **Build:** 2026 – 2030

Designer: SOM

Construction: Austin Commercial



Pre-design conceptual rendering. Final design specifications and features subject to change as the project progresses.

Appendix

Journey with AUS Prime Designers and Contractors

| Project | Contract Type | Company |
|--|---------------|------------------------|
| West Infill & TSA Checkpoint 3 Expansion | Design-Build | Gensler/Whiting-Turner |
| West Gate Expansion | Design | Page |
| | CMAR | Hensel Phelps |
| Atrium Infill | Design | Corgan |
| | CMAR | Whiting Turner |
| Midfield Taxiways | Design | RS&H |
| | CMAR | Austin Bridge & Road |
| Yellow Parking Garage | Design | PGAL |
| | CMAR | Austin Commercial |
| Central Utility Plant | Design-Build | JE Dunn/Jacobs |
| Utility Infrastructure Campus-Wide | Design | HDR |
| | CMAR | Sundt/Archer Western |
| Concourse B & Tunnel | Design | Page/Fentress |
| | CMAR | Hensel-Phelps |
| Arrival & Departure Hall | Design | SOM |
| | CMAR | Austin Commercial |

Project Details

Disadvantage Business Enterprise Goals and Delivery Methods

Outbound Baggage Handling System & West Infill

- Disadvantaged Business Enterprise Goals
 - Construction & Design: 5.52%
 - 10% anticipated
- Delivery Methods
 - Design-Build
 - Whiting-Turner
 - Gensler, VTC BHS

West Gate Expansion

- Disadvantaged Business Enterprise Goals
 - Design: 17%
 - Construction: 11.12%
- Delivery Methods
 - Design: Page Architects (Rotation List)
 - Construction: Hensel Phelps

Midfield Taxiways

- Disadvantaged Business Enterprise Goals
 - Design: 17%
 - Pre-Construction: 9.14%
 - Construction: 7.45%
- Delivery Methods
 - Design: RS&H
 - Construction: Construction Manager At Risk: Austin Bridge & Road

West Garage Lot B

- Disadvantaged Business Enterprise Goals
 - Design: 10.71%
 - Pre-Construction: 14.27%
- Delivery Methods
 - Design: PGAL, Inc.
 - Construction: Construction Manager At Risk: Austin Commercial, LP

Project Details

Disadvantage Business Enterprise Goals and Delivery Methods

Atrium Infill

- Disadvantaged Business Enterprise Goals
 - Design:
 - Construction: 10.4%
- Delivery Methods
 - Design: Corgan
 - Construction: Whiting Turner

Utility Infrastructure Campus-Wide

- Disadvantaged Business Enterprise Goals
 - Design: 5.75%
 - Construction: 6.32%
- Delivery Methods
 - Design: HDR Engineering, Inc.
 - Construction: Sundt/Archer Western

Central Utility Plant

- Disadvantaged Business Enterprise Goals
 - Design: 18.9%

- Delivery Methods
 - Progressive Design-Build: JE Dunn/Jacobs

Concourse B and Tunnel

- Disadvantaged Business Enterprise Goals
 - Design: 8.85%
 - Pre-Construction and Construction: 9.40%
- Delivery Methods:
 - Design: Page / Fentress Joint Venture
 - Construction: Hensel Phelps

Arrivals and Departures Hall

- Disadvantaged Business Enterprise Goals
 - Design: 10.25%
 - Pre-Construction and Construction: 8.74%
- Delivery Methods
 - Design: Skidmore, Owings & Merrill LLP
 - Construction: Austin Commercial, LP

Project Descriptions

Outbound Baggage Handling System & West Infill – 5415.112

- Design build a new centralized baggage handling system (BHS) to increase screening capacity, address existing operational concerns, and upgrade to 30 Million Annual Passengers processed. Includes the West Infill and TSA Checkpoint 3 expansion projects, which will add over 75,000 square feet to the Barbara Jordan Terminal over 4 levels and allow for the expansion of Checkpoint 3 from 2 to up to 8 lanes.

West Gate Expansion – 13184.014

- The main expansion project will add 3 new Gates (short term) to the west end of the Barbara Jordan Terminal (BJT) and replace 12 aging boarding gates. This project will provide infrastructure needed for passenger growth, comfort, health and safety.

Midfield Taxiways- 13188.003

- Design and construct two concrete parallel midfield taxiways with taxiway connectors and access to the existing maintenance ramp. The project includes constructing two taxiway bridges, utility relocation, drainage improvements, demolition of existing pavements and infrastructure, new airfield lighting and signage, new security fencing, a new reclaimed water bulk refiling station and modifications to roadways and parking lots.

West Garage – Lot B – 13308.002

- Planning, design and construction of a multi-level parking garage with an estimated capacity of 7,700 spaces. The designated location for this garage is the current Lot B surface parking area (approx. 326,000 sf), situated directly north of the existing Blue Garage. This project creates additional parking to replace parking and revenue lost due to construction and to meet future demand connected with enplanement growth forecasts associated with the addition of Concourse B.

Project Descriptions

Atrium Infill – 13309.002

- Project will add more square feet to the terminal for security screening, bag check and passenger processing by filling in existing open space above baggage claim. The project will add approximately 12,000 square feet of concourse level floor plate to the Barbara Jordan Terminal. The elevated slab will be constructed while the existing vertical circulation is kept in place. The project will also upgrade the mechanical, electrical and plumbing systems as needed. The suspended slab will likely require enhancements to the existing structural capacity.

Utility Infrastructure Campus-Wide – 13307.001

- Design and construct utility systems including reclaimed water, storm drainage, water quality pond/deicing pond, detention pond, hydronic piping (chilled and hot water), AUS medium voltage electrical power distribution center, ductbank, and electrical distribution system, redundant electrical duct banks (as an option), information technology/telecommunications duct banks, and other utility extensions that may be identified as the Journey With AUS program progress and their seamless coordination with other Journey With AUS facilities projects.

Central Utility Plant – 13307.002

- Design, construct and commission a new, appropriately sized CUP and associated Thermal Energy Storage (TES) utilizing current efficiency technology, equipment, and operational processes to provide reliable, redundant and resilient service for the existing and future AUS cooling and heating loads.

Concourse B and Tunnel – 13185.001

- New Concourse B with at least 20 gates and a tunnel to the Barbara Jordan Terminal and all required apron space. Work includes addition of an interface connector at the Barbara Jordan Terminal to provide required seamless path for passengers to enter the tunnel and space for the baggage handling system and utilities.

Arrivals and Departures Hall – 13182.001

- New Arrivals and Departures Hall for all ticketing and domestic baggage claim. Work includes the removal of the Red Garage, relocation/expansion of curbside roadway and installation of all utility infrastructure as needed. Removal of existing ticketing in the existing Barbara Jordan Terminal is also included.

Thank You!

**JOURNEY
WITHAUS**