



**Posting Language**

Recommend approval to authorize a contract for construction services for the Northwest Area Lift Station Improvements: Four Points Center Lift Station for Austin Capital Delivery Services with Facilities Rehabilitation, Inc., in the amount of \$3,774,900 plus a \$377,490 contingency for a total contract amount not to exceed \$4,152,390. Funding: \$4,152,390 is available in the Capital Budget of Austin Water.

**Lead Department**

Austin Financial Services.

**Managing Department**

Austin Capital Delivery Services.

**Amount and Source of Funding**

Funding is available in the Capital Budget of Austin Water.

**Procurement Language:**

Austin Financial Services issued an Invitation for Bids solicitation IFB 6100 CLMC1075 for these goods and services. The solicitation was issued on June 16, 2025, and closed on July 17, 2025. Of the eight offers received, the bid submitted by the recommended contractor was the lowest responsive bid received. A complete solicitation package, including a tabulation of the bids received, is available for viewing on the City's website. This information can currently be found at

[https://financeonline.austintexas.gov/afo/account\\_services/solicitation/solicitation\\_details.cfm?sid=141652](https://financeonline.austintexas.gov/afo/account_services/solicitation/solicitation_details.cfm?sid=141652)

**MBE/WBE:**

This contract will be awarded in compliance with City Code Chapter 2-9A (Minority-Owned and Women-Owned Business Enterprise Procurement Program) by meeting the goals with 98.42% MBE and 1.58% WBE participation.

**Council Committee, Boards and Commission Action:**

November 12, 2025 – To be reviewed by the Water and Wastewater Commission.

**Additional Backup Information:**

This project will include improvements to a lift station identified in the Northwest Lift Station Long Range Planning Engineering Study to improve the wastewater system in Bull Creek wastewater basin. The lift station was built in 1998 as a wet well duplex station and requires rehabilitation to extend its useful life, ensuring the lift station operates in good working order and minimize ongoing maintenance costs.

This project consists of rehabilitating an existing lift station to provide reliable service. The rehabilitated lift station design includes wet well coatings, valves, pumps, odor control equipment, electrical, communication, emergency generator, and resilience improvements to meet current City standards. Construction of these improvements will allow Austin Water to continue providing wastewater services to the increasing population in the area, as well as reducing noxious odors impacting the community.

Due to the potential for unknown subsurface conditions a 10% contingency in funding has been included to allow for the expeditious processing of any change orders to cover any unforeseen construction costs associated with the project.



Item 3

Water & Wastewater Commission: November 12, 2025

Council: November 20, 2025

The work will occur on City-owned property, thus minimizing the impact to the public and environmentally sensitive lands immediately adjacent to the lift station.

This construction contract is time-sensitive and is critical to the improvement of the infrastructure stability of Austin's wastewater collection systems. Delay or deferral of this contract will require additional time and cost for City operations crews to conduct maintenance and repairs.

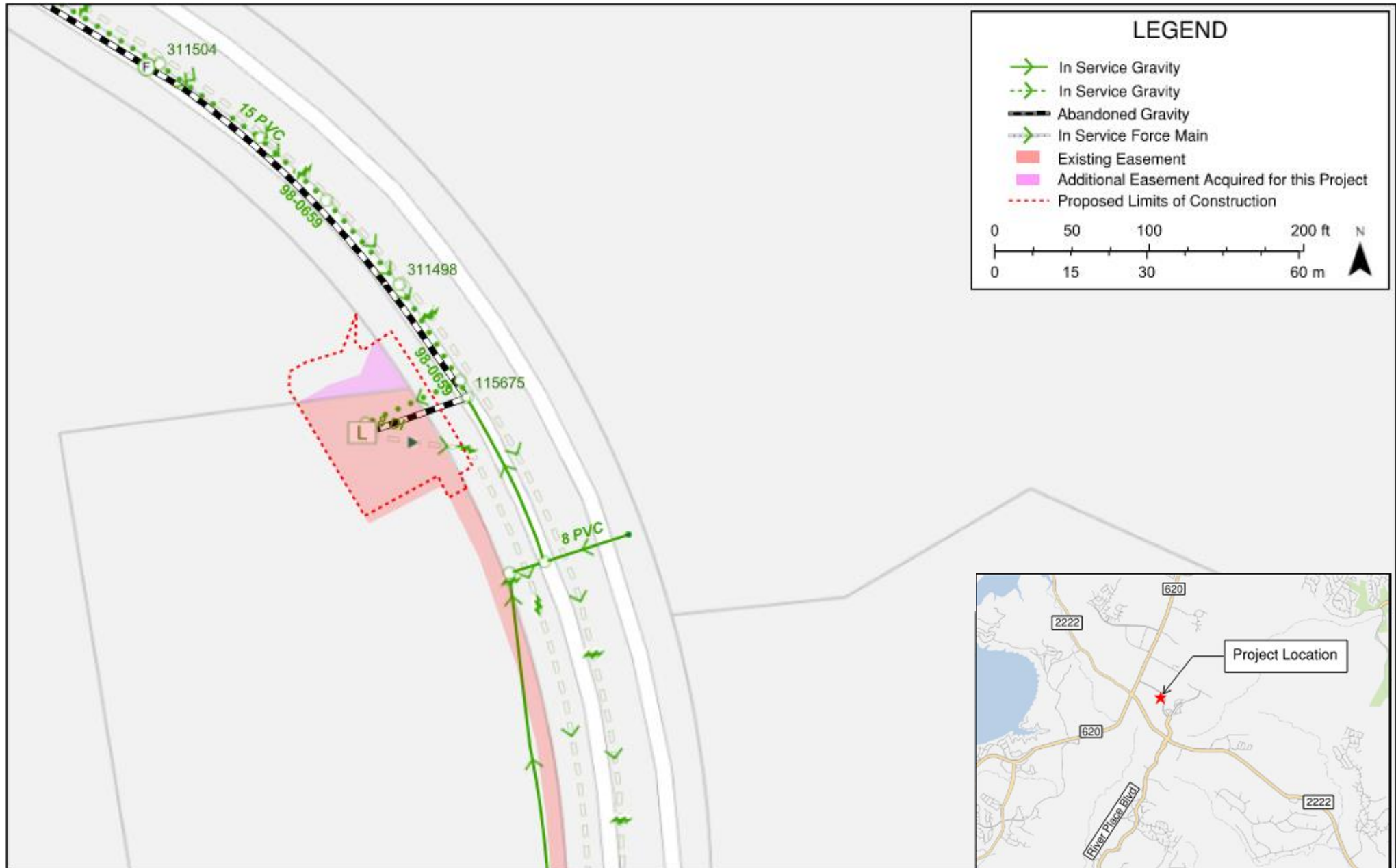
The contract allows 340 calendar days for completion of this project.

This project is located within zip code 78730 (District 10).



### Northwest Area Lift Station Improvements: Four Points Center Lift Station

CIP ID 3168.118





**M/WBE Summary**

Public notice was given for this solicitation, CLMC1075 for the Northwest Area Lift Station Improvements: Four Points Center Lift Station project, through the City’s Financial Services website, Austin Finance Online. Eight bids were received and opened on July 17, 2025. Of the eight bids received, two bids were from an MBE/WBE certified firm. Facilities Rehabilitation, Inc. submitted the lowest responsive bid:

	<u>Base Bid:</u>
Facilities Rehabilitation, Inc., Austin, TX (MBE/MH)	\$3,774,900.00
Excel Construction Services, LLC, Pflugerville, TX	\$4,120,601.00
Cedar Hills Construction LLC, Cedar Park, TX	\$4,239,651.00
CC Carlton Industries, Ltd, Austin, TX	\$4,291,000.00
Denucci Constructors, LLC, Austin, TX	\$4,391,040.00
Arguijo Corporation, West Lake Hills, TX	Non-Responsive
Roman Solutions LLC, Lakeway, TX (MBE/MH)	Non-Responsive
Wildwood US Inc., Georgetown, TX	Non-Responsive

The contractor’s choice of work methodology provides for three areas of contracting opportunities which are listed below. Participation goals stated in the solicitation were 1.62% African American; 3.50% Hispanic; 1.35% Native/Asian American; and 1.46% WBE. Total participation estimated on base bid amount:

		<b>Base Bid:</b>	<b>\$ 3,774,900.00</b>
PRIME	M/WBE TOTAL	\$	3,507,900.00 92.94%
	Facilities Rehabilitation, Inc., Austin, TX (MH)	\$	3,507,900.00 92.94%
MBE TOTALS - SUBCONTRACTORS		\$	207,000.00 5.48%
	<i>African American Subtotal</i>	\$	127,000.00 3.36%
	(MB) CVI Development LLC, Austin, TX (Concrete)	\$	127,000.00 3.36%
	<i>Native/Asian American Subtotal</i>	\$	80,000.00 2.12%
	(FN) KLP Commercial LLC, Manor, TX (Sewer Lift Station and Parts)	\$	80,000.00 2.12%
WBE TOTALS - SUBCONTRACTORS		\$	60,000.00 1.58%
	(FH) CL Concrete Construction, Lockhart, TX (Construction, Sidewalk, and Driveway)	\$	60,000.00 1.58%

The Contractor submitted an MBE/WBE Compliance Plan that met the goals of the solicitation and was approved by the Small and Minority Business Resources Department. Second and third low bidder information is provided.

SECOND BIDDER – Excel Construction Services, LLC, Pflugerville, TX \$4,120,601.00  
 52.16% Non M/WBE prime participation; 7.44% African American; 3.54% Hispanic; 1.40% Native/Asian American; 26.16% WBE; 9.30% Non M/WBE subcontractor participation.

THIRD BIDDER – Cedar Hills Construction, LLC, Cedar Park, TX \$4,239,651.00  
 47.00% Non M/WBE prime participation; 1.64% African American; 3.53% Hispanic; 1.38% Native/Asian American; 1.48% WBE; 44.97% Non M/WBE subcontractor participation.